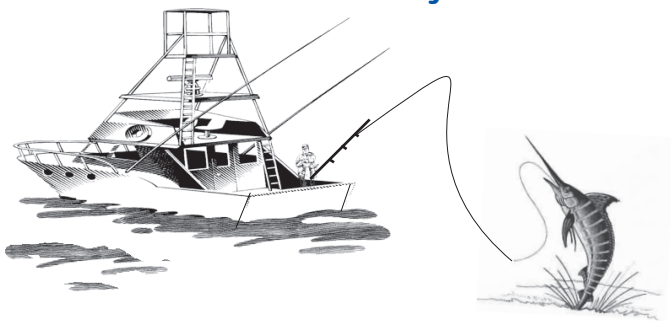


# Marlin

Quality Line-Plumbing Specialties

Orlando, Florida



*Servicing the Southeast  
"Since 1965"*

Toll Free: 1-800-327-3022

Fax Free: 1-800-327-5689

E-mail: [customerservice@tmsmarlin.com](mailto:customerservice@tmsmarlin.com)

## 2018

# Sensor Activated



**Flush Valves  
Faucets**

**Hand Dryers  
Side Mounts**

**Soap Dispensers**





# Index

<b>Manufacturer</b>	<b>CHICAGO FAUCET</b>	Chicago Lavatory Faucets	<b>Pages</b>	(56-57)
<b>Manufacturer</b>	<b>Hydrotek</b>	Hydrotek Lavatory Faucets	<b>Page</b>	(49-51)
<b>Manufacturer</b>	<b>Hydrotek</b>	Hydrotek Flushometers	<b>Pages</b>	(52-55)
<b>Manufacturer</b>	<b>SLOAN</b>	Sloan Lavatory Faucets	<b>Pages</b>	(1-12)
<b>Manufacturer</b>	<b>SLOAN</b>	Sloan Soap Dispensers	<b>Pages</b>	(13-14)
<b>Manufacturer</b>	<b>SLOAN</b>	Sloan Flushometers	<b>Pages</b>	(15-25)
<b>Manufacturer</b>	<b>SLOAN</b>	Sloan Automatic Hand Dryer	<b>Page</b>	(26)
<b>Manufacturer</b>	<b>T/C</b>	T/C Lavatory Faucet	<b>Pages</b>	(47)
<b>Manufacturer</b>	<b>T/C</b>	T/C Soap Dispensers	<b>Page</b>	(48)
<b>Manufacturer</b>	<b>T&amp;S BRASS</b>	T&S Brass Lavatory Faucets	<b>Pages</b>	(44-46)
<b>Manufacturer</b>	<b>ZURN</b>	Zurn Lavatory Faucets	<b>Pages</b>	(27-38)
<b>Manufacturer</b>	<b>ZURN</b>	Zurn Flushometers	<b>Page</b>	(39-43)

Toll Free: 800-327-3022



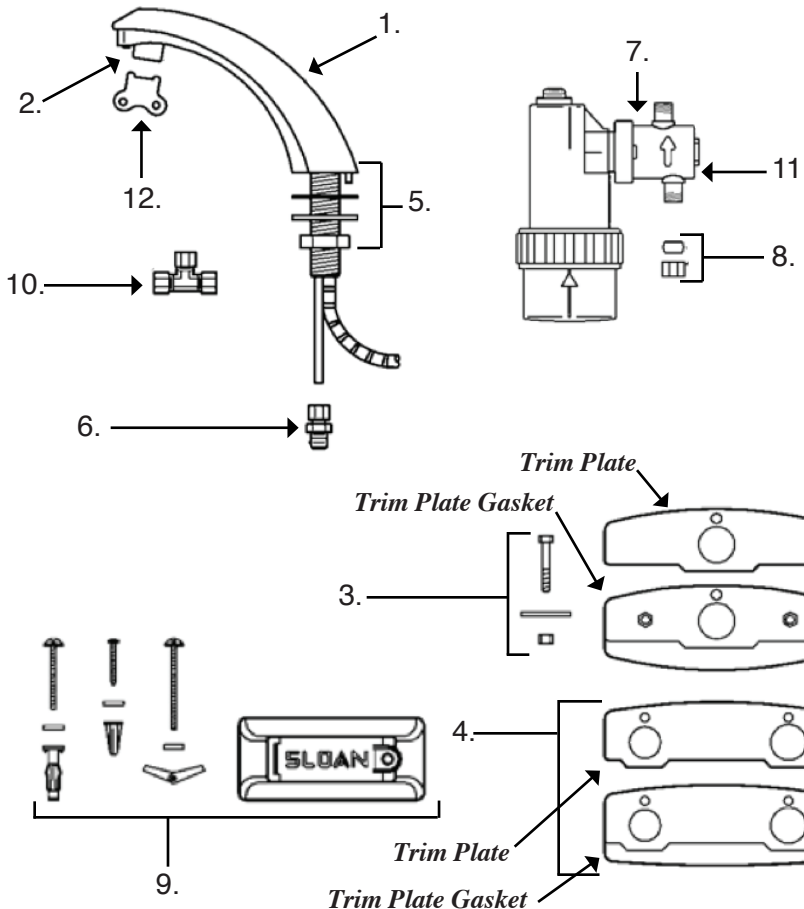
Fax Free: 800-327-5689

## Sloan OPTIMA *Plus* EBF-85 Battery Powered, Sensor Activated Faucet for Tempered or Hot/Cold water

- Splash-proof Circuit Control Module
- Fiber Optic, Automatic, Self-adaptive Sensing
- Isolated Latching Solenoid Operator, Isolates magnetic components from water contact.
- Audible Tone Low Battery Indicator
- Serviceable filtered Solenoid Valve
- Back-check Tee for Hot & Cold Supply
- Trim Plate with Anti-Rotation pin
- Vandal Resistant Spray Head with Pressure Compensating flow control
- Polypropylene Optic Cable protection
- Includes (4) C-size Alkaline Batteries (30100057)

Part No. **92617**

### Parts



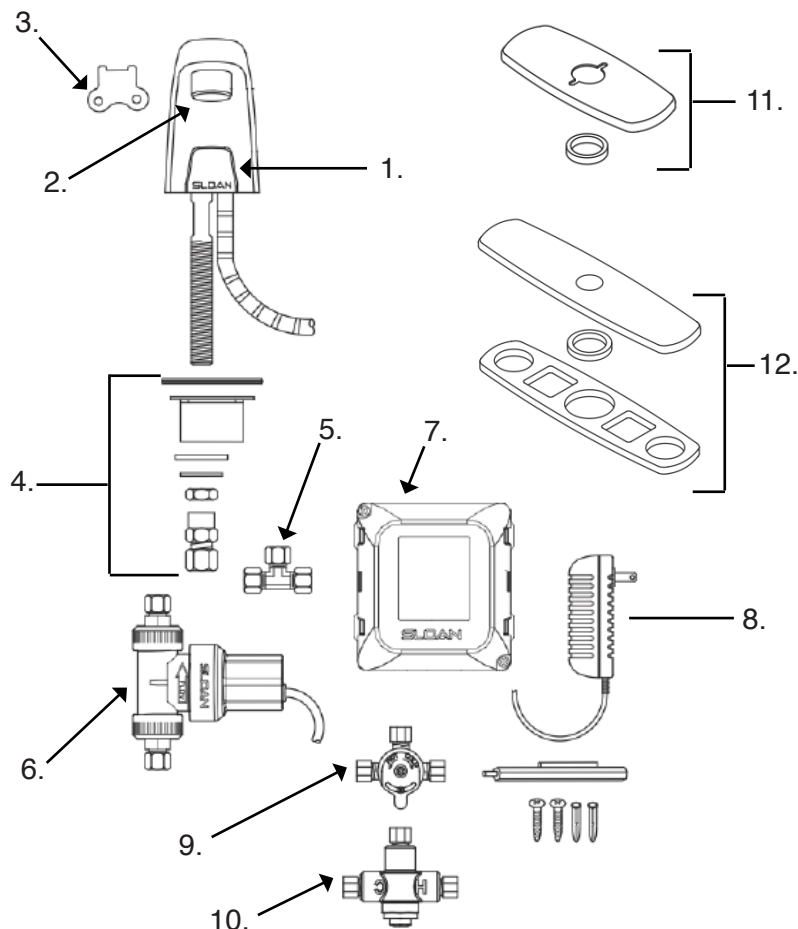
- |                                       |  |
|---------------------------------------|--|
| 1. <b>9220</b>                        | Spout & Sensor Assembly                              |
| 2. <b>40110025</b>                    | 2.2 Female Vandal Proof Aerator                      |
| 3. <b>9221</b>                        | 4" Centerset Trim Plate for Faucet Only Single Hole  |
| 4. <b>9222</b>                        | 4" Centerset Trim Plate for Optional Mixing Valve    |
| 5. <b>9223</b>                        | Faucet Mounting Kit: Nut, gasket, washer, comp. ring |
| 6. <b>40900050</b>                    | 1/4" to 3/8" Compression Fitting Connector           |
| 7. <b>40155111</b>                    | Solenoid Valve Module                                |
| 8. <b>40900003</b><br><b>40900011</b> | Ferrule & Compression Nut for Solenoid Single Supply |
| 9. <b>92695</b>                       | Mounting Bracket Kit                                 |
| 10. <b>40103127</b>                   | Back-Check T Assembly 3/8"                           |
| 11. <b>92697</b>                      | Filter Replacement Kit                               |
| 12. <b>12110</b>                      | Key Only   |



## Sloan OPTIMA *Plus* EBF-615 Battery Powered, Sensor Activated Pedestal Faucet for Tempered of Hot/Cold water

Part No. **92610**

- Splash-proof Circuit Control Module
- Sensor Range Adjustment Screw
- Low battery LED Indicator Light
- User friendly Variable time out settings
- Filtered Solenoid Valve with serviceable Strainer Filter
- Back-Check Tee for Hot / Cold Supply
- Vandal Resistant Spray Head with Pressure compensating Flow Control
- Metal Jacketed Wire Protection for Sensor Lead
- Includes appropriate Mounting Hardware
- Mounts on a single-hole lavatory or deck
- Includes (4) AA-size Alkaline batteries (30100044)



### Parts

- |                    |  |
|--------------------|--|
| 1. <b>9225</b>     | Sensor Only                                |
| 2. <b>40110166</b> | 2.2 Male Vandal Proof Aerator              |
| 3. <b>12110</b>    | Key Only                                   |
| 4. <b>9226</b>     | Faucet Mounting Kit                        |
| 5. <b>40103127</b> | 3/8" Back-Check Tee Fitting                |
| 6. <b>9212</b>     | 6 VDC Solenoid Valve Assy.                 |
| 7. <b>9213</b>     | Control Module                             |
| 8. <b>9227</b>     | 110 VAC/6 VDC Plug-in Adaptor              |
| 9. <b>32990370</b> | Below Deck Mechanical Water Mixing Valve   |
| 10. <b>9228</b>    | Below Deck Thermostatic Water Mixing Valve |
| 11. <b>9214</b>    | 4" Centerset Trim Plate                    |
| 12. <b>9229</b>    | 8" Centerset Trim Plate                    |

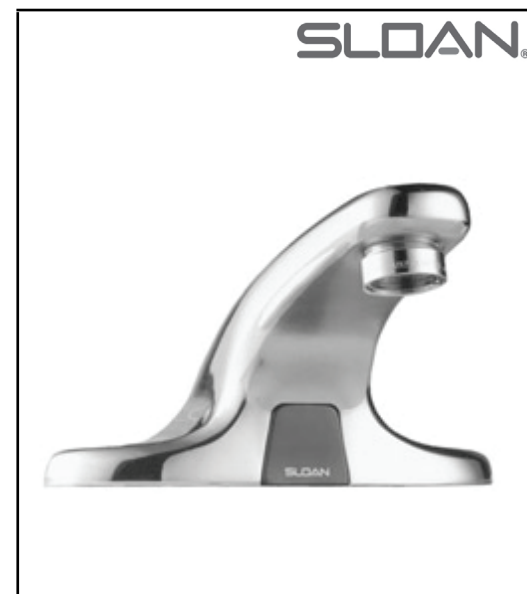


Toll Free: 800-327-3022

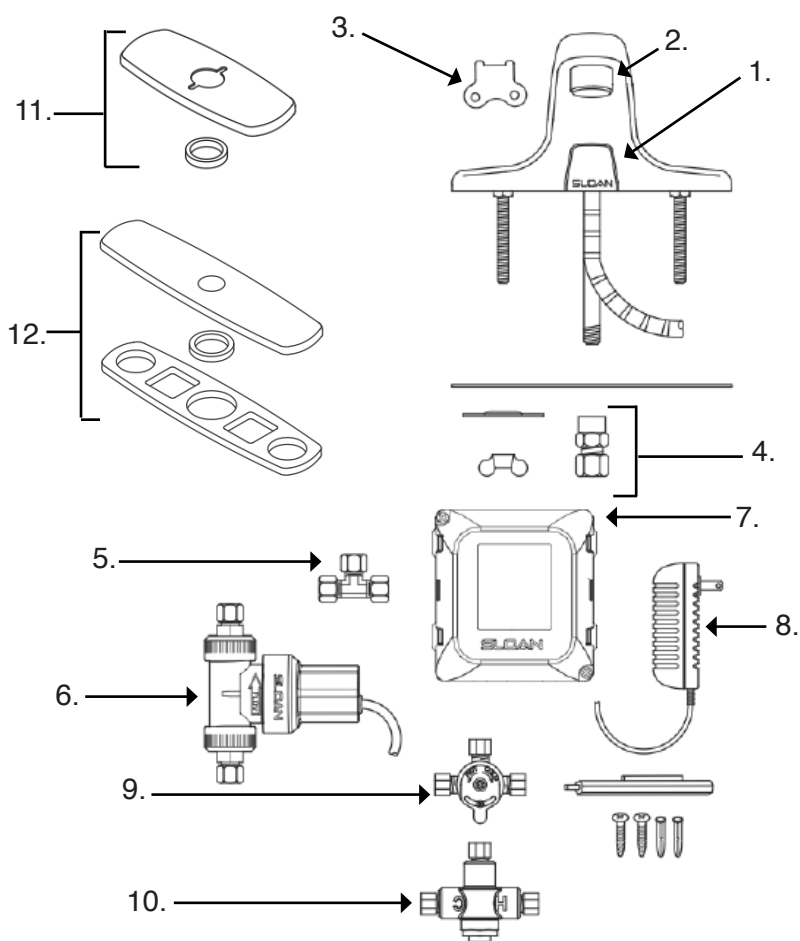


Fax Free: 800-327-5689

## Sloan OPTIMA *Plus* EBF-650 Battery Powered, Sensor Activated Faucet for Tempered or Hot/Cold water

Part No. **40261178**

- Splash-proof Circuit Control Module
- Sensor Range Adjustment Screw
- Low battery LED Indicator Light
- User friendly Variable time out settings
- Filtered Solenoid Valve with serviceable Strainer Filter
- Back-Check Tee for Hot / Cold Supply
- Vandal Resistant Spray Head with Pressure compensating Flow Control
- Metal Jacketed Wire Protection for Sensor Lead
- Includes appropriate Mounting Hardware
- Mounts on a single-hole lavatory or deck
- Includes (4) AA-size Alkaline Batteries (30100044)



### Parts

- |                    |  |
|--------------------|--|
| 1. <b>9225</b>     | Sensor Only                                |
| 2. <b>40110166</b> | 2.2 Male Vandal Proof Aerator              |
| 3. <b>12110</b>    | Key Only                                   |
| 4. <b>9231</b>     | Faucet Mounting Kit                        |
| 5. <b>40103127</b> | 3/8" Back-Check Tee Fitting                |
| 6. <b>9212</b>     | 6 VDC Solenoid Valve Assy.                 |
| 7. <b>40150038</b> | Control Module                             |
| 8. <b>9227</b>     | 110 VAC/6 VDC Plug-in Adaptor              |
| 9. <b>32990370</b> | Below Deck Mechanical Water Mixing Valve   |
| 10. <b>9228</b>    | Below Deck Thermostatic Water Mixing Valve |
| 11. <b>9214</b>    | 4" Centerset Trim Plate                    |
| 12. <b>9229</b>    | 8" Centerset Trim Plate                    |



## Sloan OPTIMA *Plus* EBF-750 Battery Powered, Sensor Activated Gooseneck Faucet for Tempered or Hot/Cold water

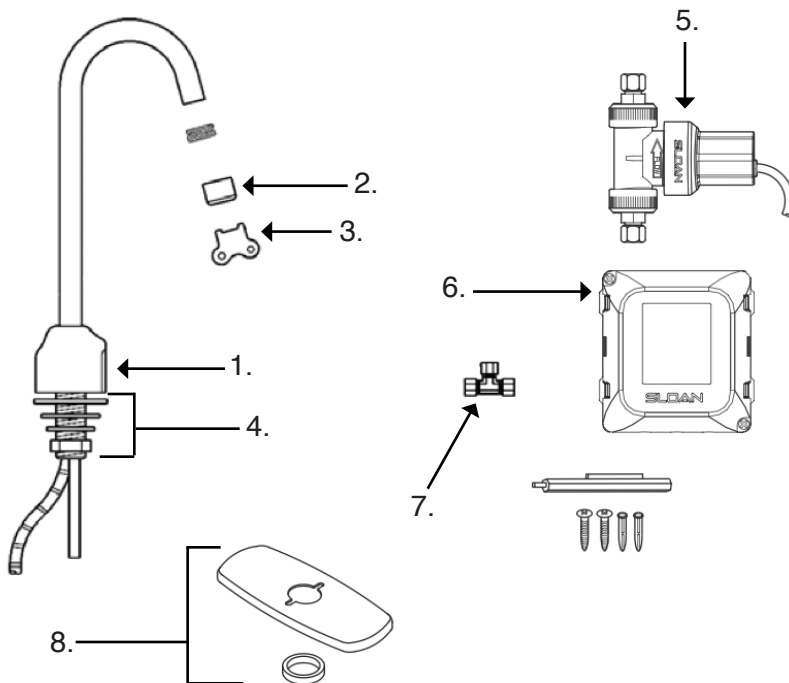
Part No. **92613**

- Splash-proof Circuit Control Module
- Isolated Latching Solenoid Operator
- Sensor Range Adjustment Screw
- Low battery LED Indicator Light
- User friendly Variable time out settings
- Filtered Solenoid Valve with serviceable Strainer Filter
- Back-Check Tee for Hot / Cold Supply
- Vandal Resistant Spray Head with Pressure compensating Flow Control
- Metal Jacketed Wire Protection for Sensor Lead
- Includes appropriate Mounting Hardware
- Includes (4) AA-size Alkaline Batteries (30100044)



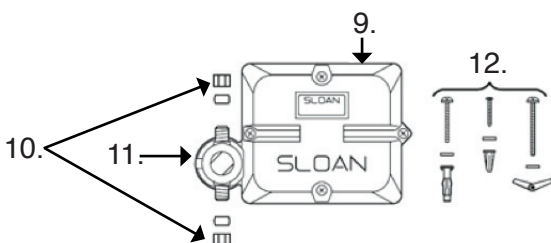
### Parts

- |                     |                                 |
|---------------------|---------------------------------|
| 1. <b>9210</b>      | Sensor Only                     |
| 2. <b>40110025</b>  | 2.2 Female Vandal Proof Aerator |
| 3. <b>12110</b>     | Key Only                        |
| 4. <b>9211</b>      | Faucet Mounting Kit             |
| 5. <b>9212</b>      | 6 VDC Solenoid Valve Assy.      |
| 6. <b>9213</b>      | Control Module                  |
| 7. <b>40103127</b>  | 3/8" Back-Check Tee Fitting     |
| 8. <b>9214</b>      | 4" Centerset Trim Plate         |
| 9. <b>40150038</b>  | Control Module Assy.            |
| 10. <b>40900011</b> | Supply Compression Nut Kit      |
| 11. <b>92697</b>    | Solenoid Replacement Kit        |
| 12. <b>9215</b>     | Mounting Hardware Kit           |



### Parts Prior to September 2008

Note: Earlier faucet models are not compatible with the current models.



Toll Free: 800-327-3022

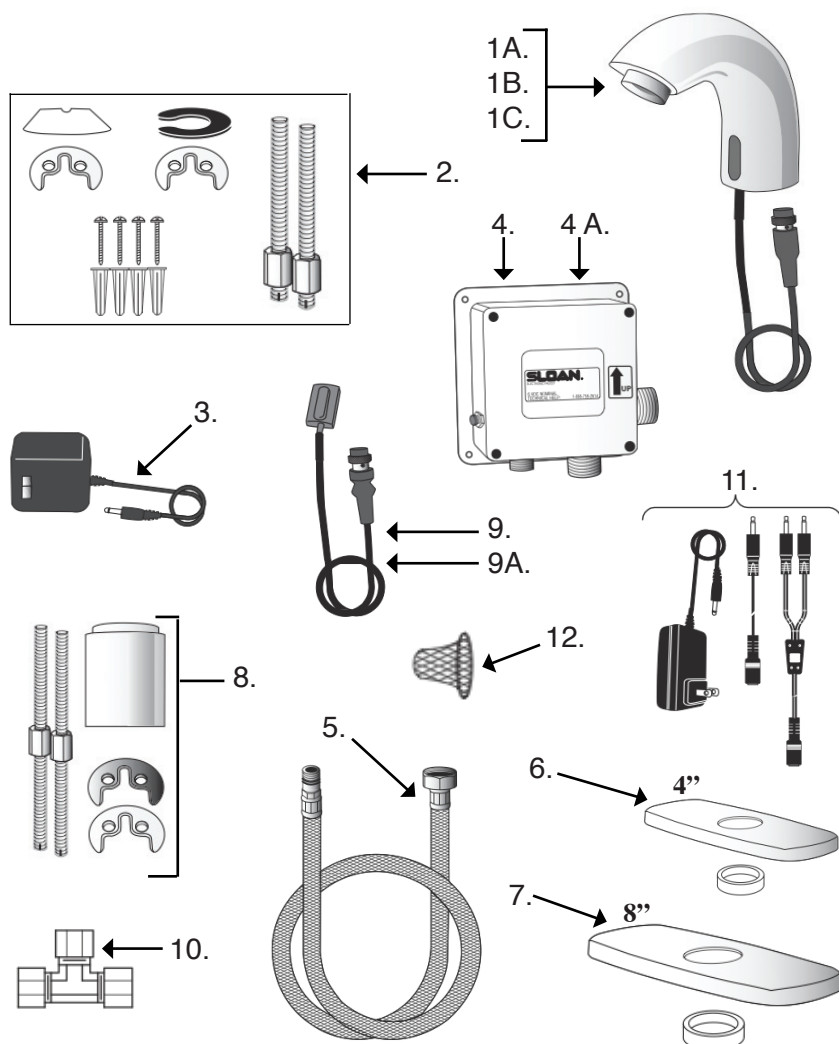


Fax Free: 800-327-5689

## Sloan SF-2150 Pedestal Electronic Sensor Activated Hand Faucet for Tempered or Hot/Cold Water

Part No. **40103112****SLOAN**

- Splash-proof Circuit Control Module
- Adjustable Infrared Sensor Range
- 36" Long Sensor Cable
- 24" Long Flex Hose
- Filtered Solenoid Valve with serviceable strainer filter
- Back-Check Tee for Hot/Cold Supply
- 6 VDC Plug-in Adaptor
- Non-aerated Spray Head
- Includes (4) AA-size Batteries (30100044)
- Includes appropriate Mounting Hardware
- Trim Plate Kit for 4" Centerset Sink



### Parts

- |                     |   |
|---------------------|---|
| 1A. <b>9237</b>     | 2.2 Male Aerator                                      |
| 1B. <b>40110166</b> | 2.2 Vandal Proof Aerator                              |
| 1C. <b>9239</b>     | 1.5 Male Aerator                                      |
| 2. <b>9231</b>      | Mounting Hardware Kit                                 |
| 3. <b>9232</b>      | 110 VAC/6 VDC Plug-in Adaptor (US)                    |
| 4. <b>40103121</b>  | Module (6 pin connector)                              |
| 4A. <b>40103122</b> | Module (4 pin connector) (Before 2008) Used 4 pin     |
| 5. <b>40103123</b>  | Flex Hose Control Module to Spout (all models)        |
| 6. <b>9233</b>      | 4" Trim Plate with Spacer                             |
| 7. <b>9234</b>      | 8" Trim Plate with Spacer                             |
| 8. <b>9235</b>      | Faucet Extension Kit                                  |
| 9. <b>40103125</b>  | Sensor Assy. 6 pin connector                          |
| 9A. <b>40103126</b> | Sensor Assy. 4 pin connector (Before 2008) used 4 pin |
| 10. <b>40103127</b> | 3/8" Back-Check Tee                                   |
| 11. <b>9236</b>     | 100-240 VAC/6 VDC Gang Adaptor Kit                    |
| 12. <b>40103132</b> | Inlet Strainer for Control Module                     |



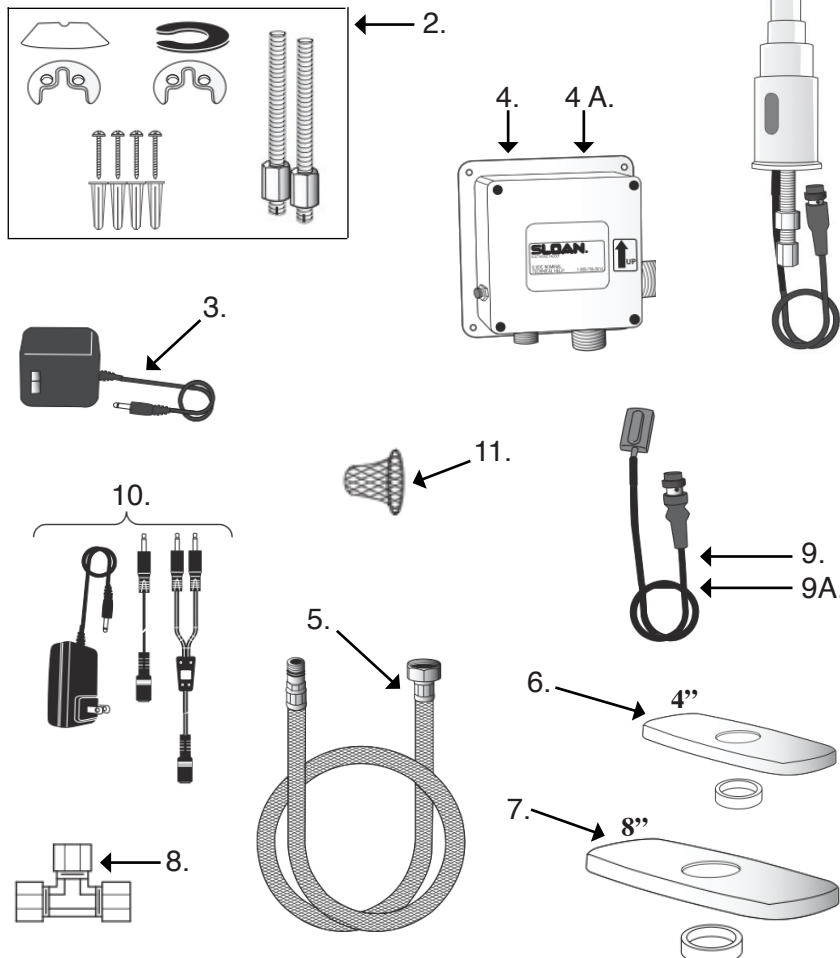
# Sloan SF-2250 Electronic Gooseneck Sensor Activated Hand Faucet for Temp or Hot/Cold water

- Splash-proof Circuit Control Module
- Adjustable Infrared Sensor Range
- 36" Long Sensor Cable
- 24" Long Flex Hose
- Filtered Solenoid Valve with serviceable strainer filter
- Back-Check Tee for Hot/Cold Supply
- 6 VDC Plug-in Adaptor
- Laminar Spray Head
- Includes (4) AA-size Batteries (30100044)
- Includes appropriate Mounting Hardware
- Trim Plate Kit for 4" Centerset Sink

Part No. **40103113**

## Parts

- |                     |   |
|---------------------|---|
| 1A. <b>40110436</b> | 1.5 Female Laminar Aerator                            |
| 1B. <b>40110025</b> | 2.2 Female Vandal Proof Aerator                       |
| 2. <b>9231</b>      | Mounting Hardware Kit                                 |
| 3. <b>9232</b>      | 110 VAC/6 VDC Plug-in Adaptor (US)                    |
| 4. <b>40103121</b>  | Module (6 pin connector)                              |
| 4A. <b>40103122</b> | Module (4 pin connector) (Before 2008) Used 4 pin     |
| 5. <b>40103123</b>  | Flex Hose Control Module to Spout (all models)        |
| 6. <b>9233</b>      | 4" Trim Plate with Spacer                             |
| 7. <b>9234</b>      | 8" Trim Plate with Spacer                             |
| 8. <b>40103127</b>  | 3/8" Back-Check Tee                                   |
| 9. <b>40103125</b>  | Sensor Assy. 6 pin connector                          |
| 9A. <b>40103126</b> | Sensor Assy. 4 pin connector (Before 2008) Used 4 pin |
| 10. <b>9236</b>     | 100-240 VAC/6 VDC Gang Adaptor Kit                    |
| 11. <b>40103132</b> | Inlet Strainer for Control Module                     |



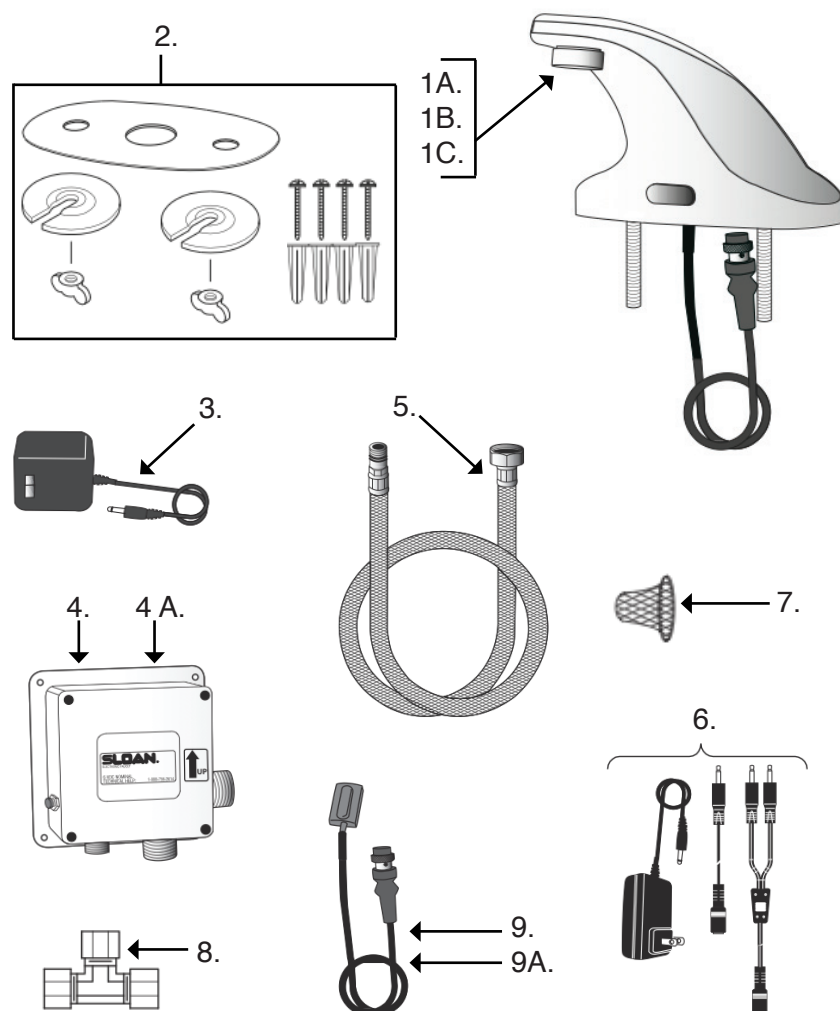
Toll Free: 800-327-3022



Fax Free: 800-327-5689

## Sloan SF-2350 Electronic 4" Center-Set Sensor Activated Hand Faucet for Tempered or Hot/Cold Water

- Splash-proof Circuit Control Module
- Adjustable Infrared Sensor Range
- 36" Long Sensor Cable
- 24" Long Flex Hose
- Filtered Solenoid Valve with serviceable strainer filter
- Back-Check Tee for Hot/Cold Supply
- 6 VDC Plug-in Adaptor
- Aerator Spray Head
- Includes (4) AA-size Batteries (30100044)
- Includes appropriate Mounting Hardware

Part No. **40103114**

### Parts

- |                     |   |
|---------------------|---|
| 1A. <b>9237</b>     | 2.2 Male Aerator                                      |
| 1B. <b>40110166</b> | 2.2 Vandal Proof Aerator                              |
| 1C. <b>9239</b>     | 1.5 Male Aerator                                      |
| 2. <b>9238</b>      | Mounting Hardware Kit                                 |
| 3. <b>9232</b>      | 110 VAC/6 VDC Plug-in Adaptor (US)                    |
| 4. <b>40103121</b>  | Module (6 pin connector)                              |
| 4A. <b>40103122</b> | Module (4 pin connector) (Before 2008) Used 4 pin     |
| 5. <b>40103123</b>  | Flex Hose Control Module to Spout (all models)        |
| 6. <b>9236</b>      | 100-240 VAC/6 VDC Gang Adaptor Kit                    |
| 7. <b>40103132</b>  | Inlet Strainer for Control Module                     |
| 8. <b>40103127</b>  | 3/8" Back-Check Tee                                   |
| 9. <b>40103125</b>  | Sensor Assy. 6 pin connector                          |
| 9A. <b>40103126</b> | Sensor Assy. 4 pin connector (Before 2008) Used 4 pin |





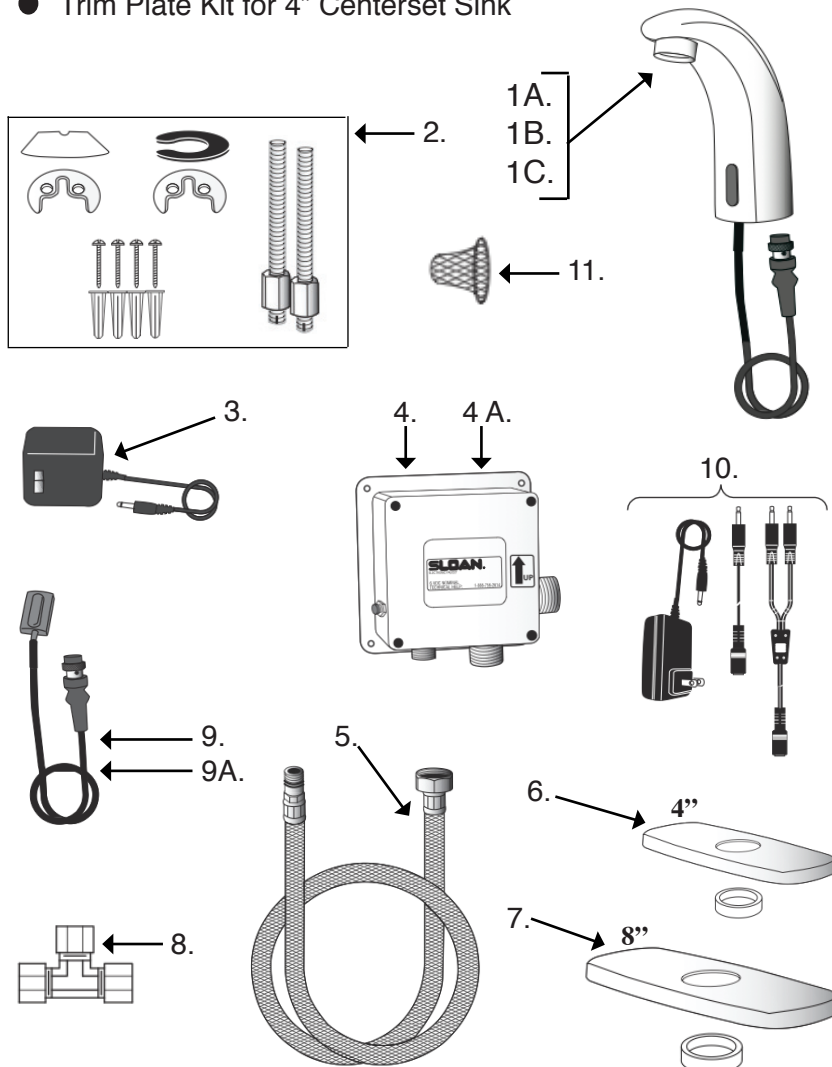
## Sloan SF-2450 Electronic Pedestal Sensor Activated Hand Faucet for Tempered or Hot/Cold Water

- Splash-proof Circuit Control Module
- Adjustable Infrared Sensor Range
- 36" Long Sensor Cable
- 24" Long Flex Hose
- Filtered Solenoid Valve with serviceable strainer filter
- Back-Check Tee for Hot/Cold Supply
- 6 VDC Plug-in Adaptor
- Non-aerated Spray Head
- Includes (4) AA-size Batteries (30100044)
- Includes appropriate Mounting Hardware
- Trim Plate Kit for 4" Centerset Sink

Part No. **92628**

### Parts

- |                     |  |
|---------------------|--|
| 1A. <b>9237</b>     | 2.2 Male Aerator   |
| 1B. <b>40110166</b> | 2.2 Vandal Proof Aerator                                 |
| 1C. <b>9239</b>     | 1.5 Male Aerator   |
| 2. <b>9231</b>      | Mounting Hardware Kit                                    |
| 3. <b>9232</b>      | 110 VAC/6 VDC Plug-in Adaptor (US)                       |
| 4. <b>40103121</b>  | Module (6 pin connector)                                 |
| 4A. <b>40103122</b> | Module (4 pin connector)<br>(Before 2008) Used 4 pin     |
| 5. <b>40103123</b>  | Flex Hose Control Module<br>to Spout (all models)        |
| 6. <b>9233</b>      | 4" Trim Plate with Spacer                                |
| 7. <b>9234</b>      | 8" Trim Plate with Spacer                                |
| 8. <b>40103127</b>  | 3/8" Back-Check Tee                                      |
| 9. <b>40103125</b>  | Sensor Assy. 6 pin connector                             |
| 9A. <b>40103126</b> | Sensor Assy. 4 pin connector<br>(Before 2008) Used 4 pin |
| 10. <b>9236</b>     | 100-240 VAC/6 VDC Gang<br>Adaptor Kit                    |
| 11. <b>40103132</b> | Inlet Strainer for Control<br>Module                     |





Toll Free: 800-327-3022

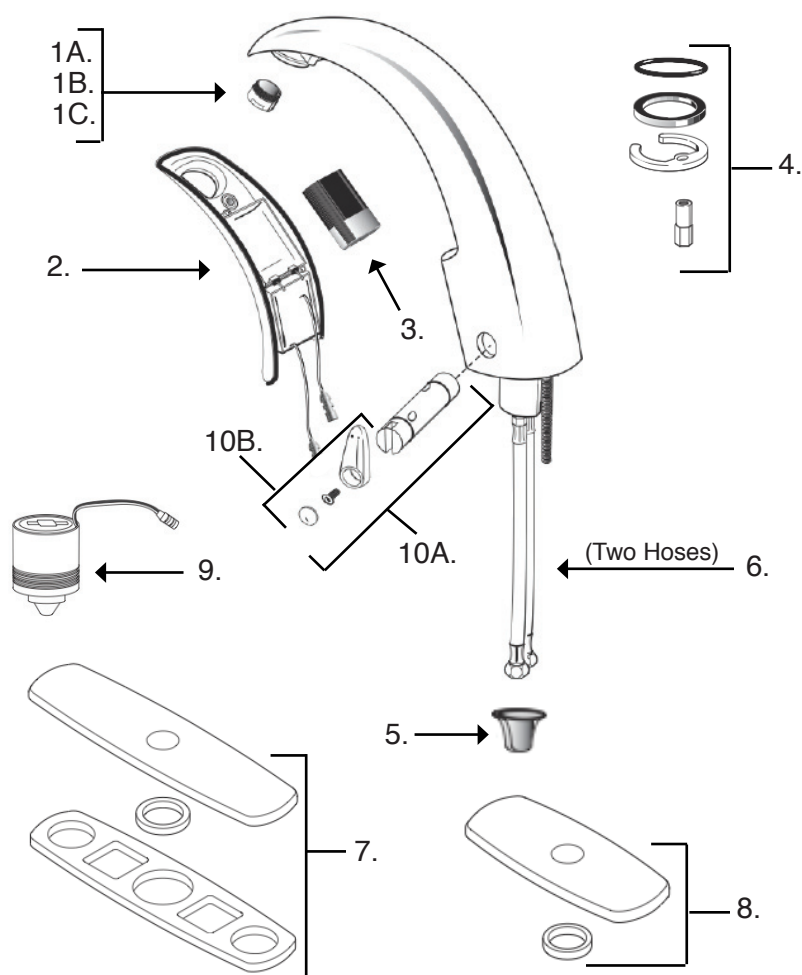


Fax Free: 800-327-5689

## Sloan EAF-150-ISM Battery Powered, Sensor Activated Hand Faucet for Tempered or Hot/Cold Water

Part No. **92629**

- Modular One-piece Construction with all Concealed components above deck
- Double Infrared Sensors with Automatic Setup and Indicator light
- Automatic Self-adapting Sensor Technology
- Low Battery Indicator
- Magnetic Solenoid Valve
- Water Supply Connection with Flexible High-pressure Hose and Strainer
- 6 Volt Lithium 2CR5 Commercial Battery included (40221175)
- Appropriate Mounting Hardware included
- Optional 24 Hour Sentinel Activation



### Parts

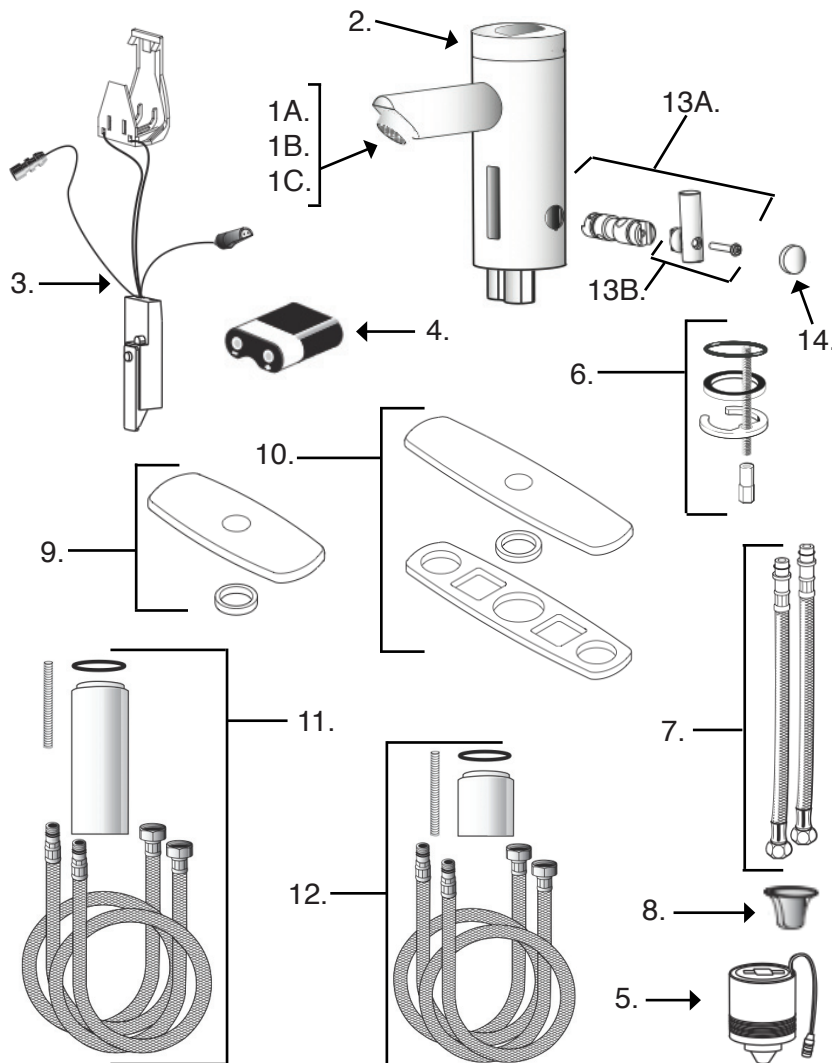
1A. <b>9239</b>	1.5 Male Aerator
1B. <b>40110166</b>	2.2 Vandal Proof Aerator
1C. <b>9237</b>	2.2 Male Aerator
2. <b>9240</b>	Throat Plate Assembly
3. <b>9241</b>	Battery Replacement Kit
4. <b>9242</b>	Faucet Mounting Kit
5. <b>9243</b>	Strainer - (Filter)
6. <b>9244</b>	13" Flexible Supply Hoses
7. <b>9245</b>	Trim plate for 8" Center-set
8. <b>9246</b>	Trim plate for 4" Center-set
9. <b>9247</b>	Solenoid
10A <b>9280</b>	Mixer Handle & Cartridge Assy.
10B. <b>9281</b>	Mixer Handle Assy.



## Sloan EAF-250-ISM Battery Powered, Sensor Activated Hand Faucet for Tempered or Hot/Cold Water

Part No. **92634****SLOAN®**

- Modular One-piece Construction with all Concealed components above deck
- Double Infrared Sensors with Automatic Setup and Indicator light
- Low Battery Indicator
- Magnetic Solenoid Valve
- Water Supply Connection with Flexible High-pressure Hose and Strainer
- 6 Volt Lithium 2CR5 Commercial Battery included (40221175)
- Appropriate Mounting Hardware included



### Parts

1A. <b>9237</b>	2.2 Male Aerator
1B. <b>40110166</b>	2.2 Vandal Proof Aerator
1C. <b>9239</b>	1.5 Male Aerator
2. <b>9248</b>	Cap
3. <b>9249</b>	Faucet Sensor Assembly
4. <b>30100061</b>	Battery Replacement Kit
5. <b>9249</b>	Solenoid
6. <b>9242</b>	Faucet Mounting Kit
7. <b>9244</b>	13" Flexible Supply Hose
8. <b>9243</b>	Strainer - (Filter)
9. <b>9251</b>	Trim plate for 4" Center-set
10. <b>9252</b>	Trim plate for 8" Center-set
11. <b>9253</b>	Faucet Extension Kit
12. <b>9254</b>	2-1/4" Faucet Extension Kit
13A. <b>9282</b>	Mixer Handle & Cartridge Assy.
13B. <b>9283</b>	Mixer Handle Assy.
14. <b>9284</b>	Handle Cap

Toll Free: 800-327-3022



Fax Free: 800-327-5689

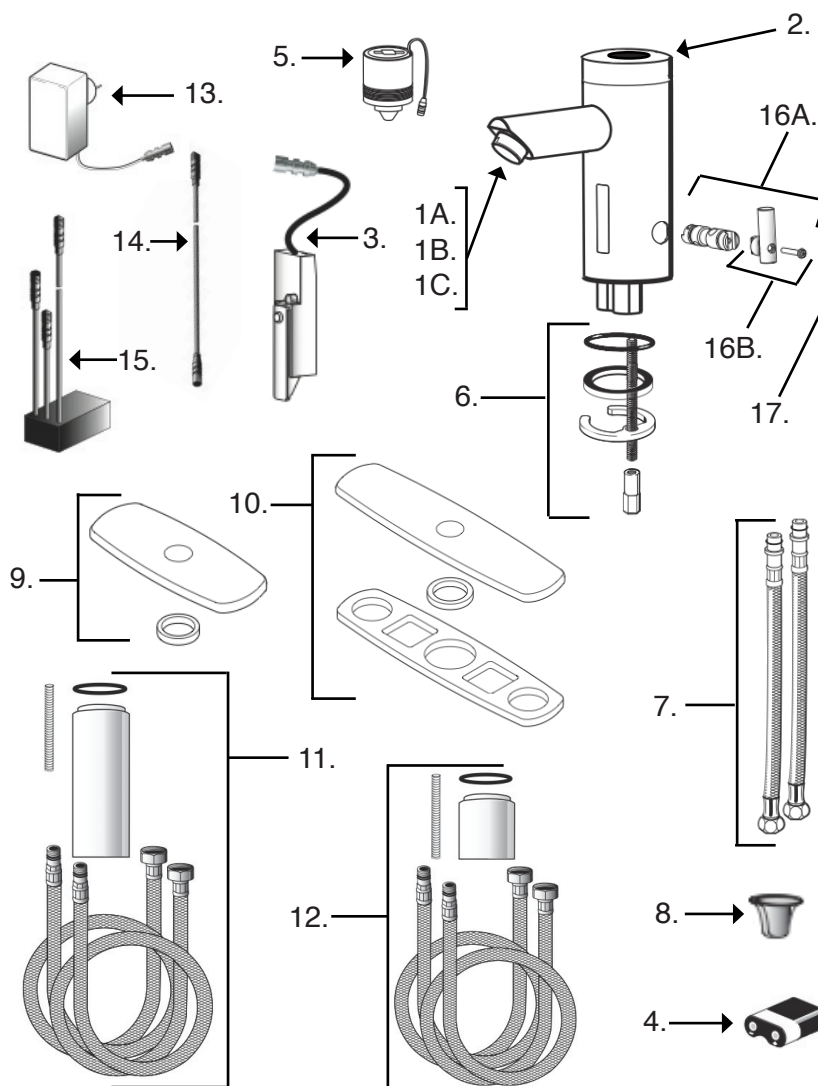
## Sloan EAF-275-ISM SOLAR Powered, Sensor Activated Hand Faucet for Tempered or Hot/Cold Water

- Modular One-piece Construction with all Concealed components above deck
- Double Infrared Sensors with Automatic Setup and Indicator light
- Low Battery Indicator
- Magnetic Solenoid Valve
- Water Supply Connection with Flexible High-pressure Hose and Strainer
- 6 Volt Lithium 2CR5 Commercial Battery included (40221175)
- Appropriate Mounting Hardware included

Part No. **92636**

### Parts

- |                     |                                |
|---------------------|--------------------------------|
| 1A. <b>9237</b>     | 2.2 Male Aerator               |
| 1B. <b>40110166</b> | 2.2 Vandal Proof Aerator       |
| 1C. <b>9239</b>     | 1.5 Male Aerator               |
| 2. <b>9255</b>      | Cap                            |
| 3. <b>9256</b>      | Faucet Sensor Assembly         |
| 4. <b>30100061</b>  | Battery Replacement Kit        |
| 5. <b>9247</b>      | Solenoid                       |
| 6. <b>9242</b>      | Faucet Mounting Kit            |
| 7. <b>9244</b>      | 13" Flexible Supply Hoses      |
| 8. <b>9243</b>      | Strainer - (Filter)            |
| 9. <b>9251</b>      | Trim plate for 4" Center-set   |
| 10. <b>9252</b>     | Trim plate for 8" Center-set   |
| 11. <b>9253</b>     | Faucet Extension Kit           |
| 12. <b>9254</b>     | 2-1/4" Faucet Extension Kit    |
| 13. <b>9257</b>     | Plug-in Adaptor                |
| 14. <b>9258</b>     | Extension Cable                |
| 15. <b>9259</b>     | Power Splitter                 |
| 16A. <b>9282</b>    | Mixer Handle & Cartridge Assy. |
| 16B. <b>9283</b>    | Mixer Handle Assy.             |
| 17. <b>9284</b>     | Handle Cap                     |





## Sloan EFX-275 SOLAR Powered, Infrared Sensor Activated Faucet for Tempered or Hot/Cold Water

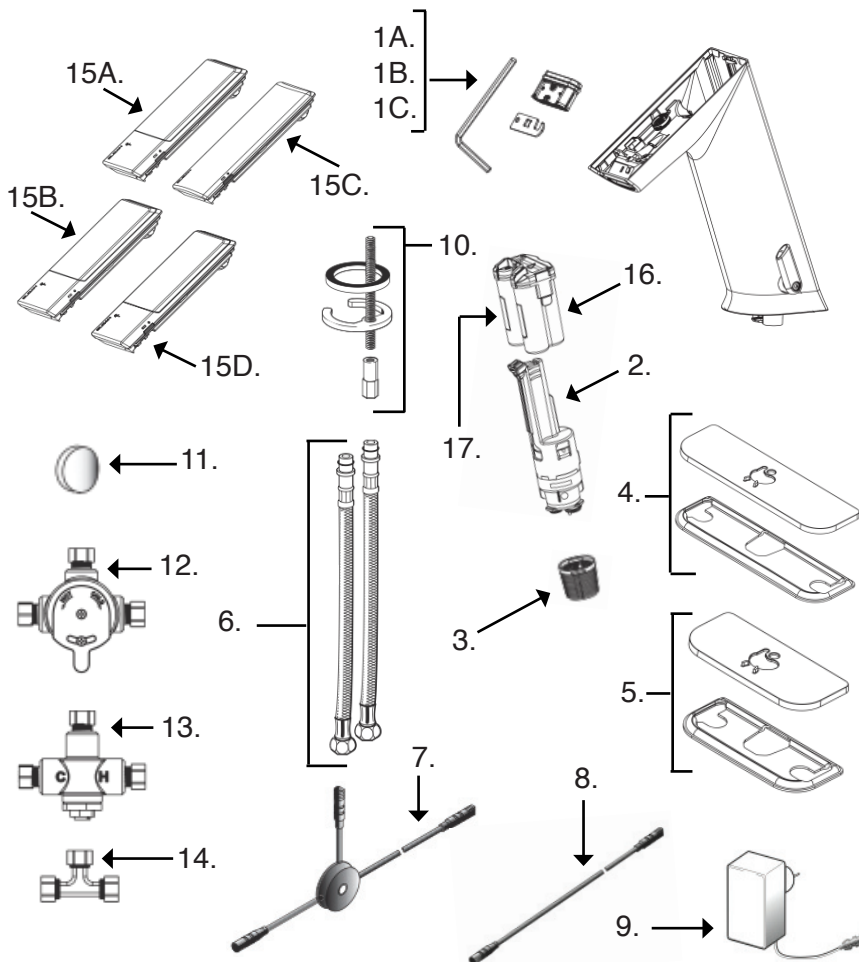


- All Concealed components above deck.
- One tool service.
- All wetted components to be stainless steel, engineered thermoplastic, EPDM, and copper or copper alloy.
- Solenoid housed in removable carrier that includes strainer.
- Integral water supply shut off.
- Supply strainer serviceable from above deck.
- Vandal resistant spray insert, key housed inside faucet body.
- All electronics sealed to IP-67.
- Gold plated electrical contacts.
- Above deck diagnostic indicators for battery, solenoid & power.
- Flexible, high pressure supply hoses, 3/8" comp. connections.
- Adjustable time-outs
- LCD display of water temperature and scrub time.

Part No. **92637**

### Parts

- |                     |  |
|---------------------|--|
| 1A. <b>9277</b>     | Aerator .5                                     |
| 1B. <b>9261</b>     | Aerator 1.5                                    |
| 1C. <b>9262</b>     | Aerator 1.5 Laminar                            |
| 2. <b>9263</b>      | Solenoid Valve Caddy Assy.                     |
| 3. <b>9264</b>      | Strainer (Filter).                             |
| 4. <b>9265</b>      | Trim Plate for 8" Centerset                    |
| 5. <b>9266</b>      | Trim Plate for 4" Centerset                    |
| 6. <b>9244</b>      | 13" Flexible Supply Hoses                      |
| 7. <b>9267</b>      | Splitter                                       |
| 8. <b>9268</b>      | Extension Cable                                |
| 9. <b>9269</b>      | Plug-in Voltage Adaptor                        |
| 10. <b>9242</b>     | Faucet Mounting Kit                            |
| 11. <b>9270</b>     | Handle Cap                                     |
| 12. <b>32990370</b> | Below Deck Mixing Valve Mechanical             |
| 13. <b>9271</b>     | Below Deck Mixing Valve Thermostatic           |
| 14. <b>40103127</b> | Back-Check Tee                                 |
| 15A. <b>9272</b>    | Solar Crown Assy.                              |
| 15B. <b>9273</b>    | LCD Crown Assy.                                |
| 15C. <b>9274</b>    | Crown Assy.                                    |
| 15D. <b>9275</b>    | Solar Crown with LCD Assy.                     |
| 16. <b>9276</b>     | Battery Pack Assy.                             |
| 17. <b>30100044</b> | AA-sized battery 1-each requires (4) batteries |





Toll Free: 800-327-3022



Fax Free: 800-327-5689

## Sloan ESD-250 Electronic Sensor Activated Soap Dispenser

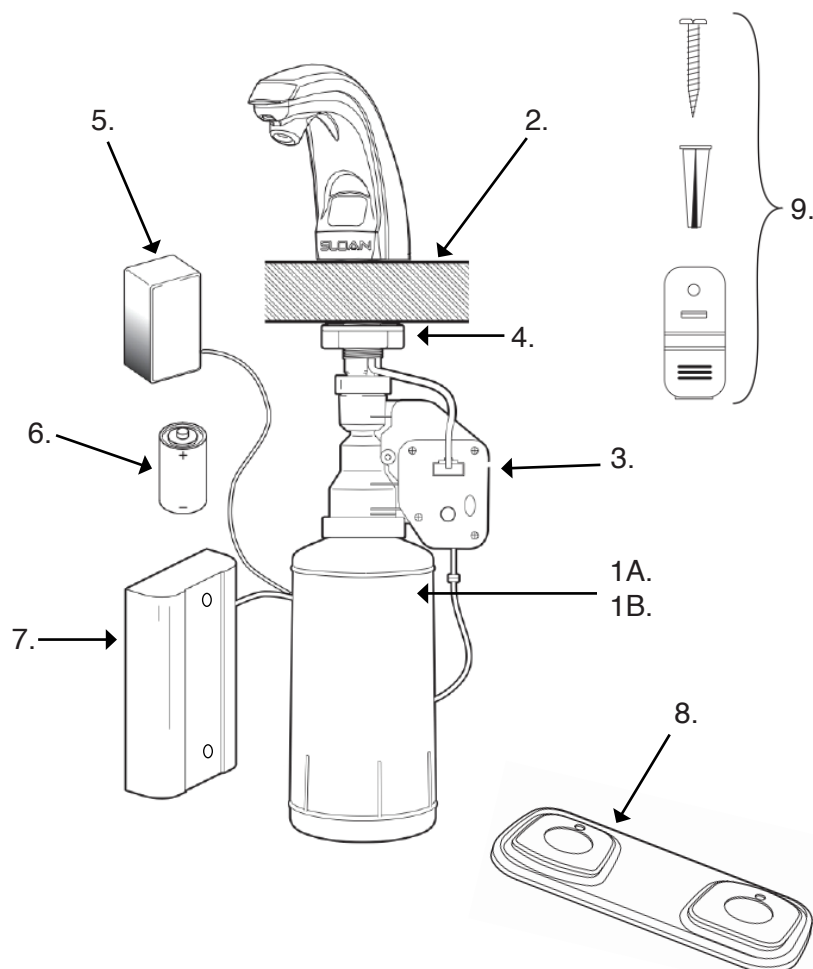


- Modular One-piece Construction
- Active Infrared Sensor
- 120 Vac plug-in Adaptor (Model ESD-200)
- Four (4) D-size Alkaline batteries included (Model ESD-250)
- D-size Alkaline battery (30100058)
- Low battery indicator (Model ESD-250)
- Mounting hardware included
- Low soap level indicator
- Easy loading disposable soap refills
- New pump and delivery tube with each refill
- Unit supplied with one 800ml. container of lotion soap

Part No. **92638**

### Parts

- |                    |                                |
|--------------------|--------------------------------|
| 1A. <b>9292</b>    | 800 ml. Soap Refill Cartridge  |
| 1B. <b>9293</b>    | 1600 ml. Soap Refill Cartridge |
| 2. <b>9285</b>     | Rubber gasket                  |
| 3. <b>9286</b>     | Motor Assy.                    |
| 4. <b>9287</b>     | Flange nut                     |
| 5. <b>9288</b>     | Plug-in Transformer            |
| 6. <b>30100058</b> | D-size Alkaline Batteries (4)  |
| 7. <b>9289</b>     | Battery pack                   |
| 8. <b>9290</b>     | Trim Plate                     |
| 9. <b>9291</b>     | Battery Pack Mounting Hardware |



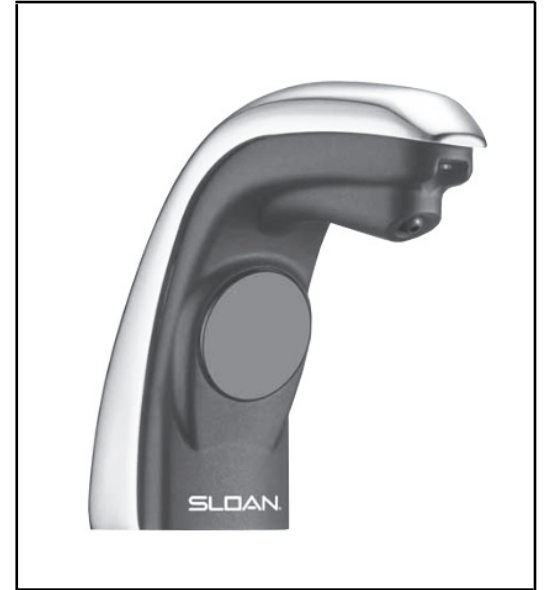


## Sloan SJS-1650 Sensor Activated Deck-Mount Liquid Soap Dispenser

- Automatically activates when a user's hand is placed under the spout nozzle
- Battery-driven sensor technology delivers a pre-measured amount of liquid soap
- Easy-to-load refills simplify soap replacement and reduce waste.
- Yellow LED in the sensor window blinks when the soap pouch needs replacement.

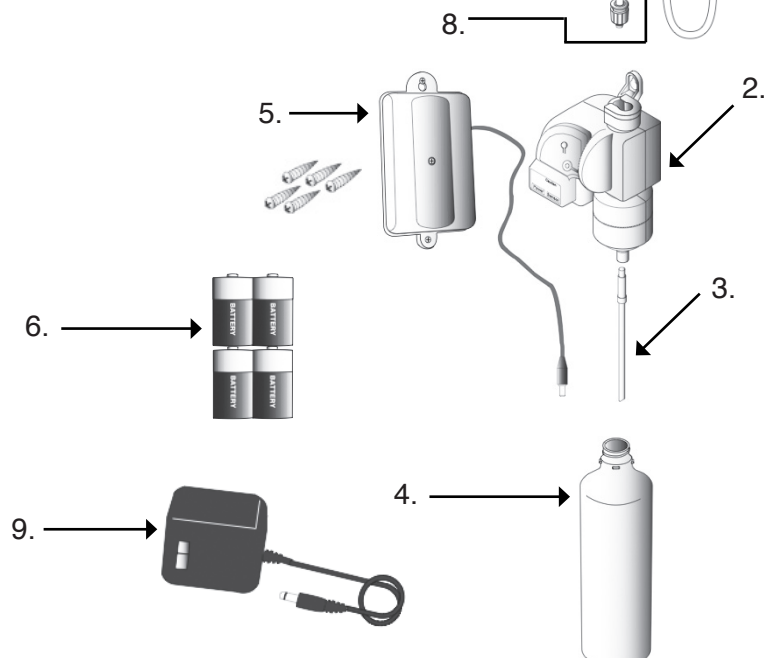
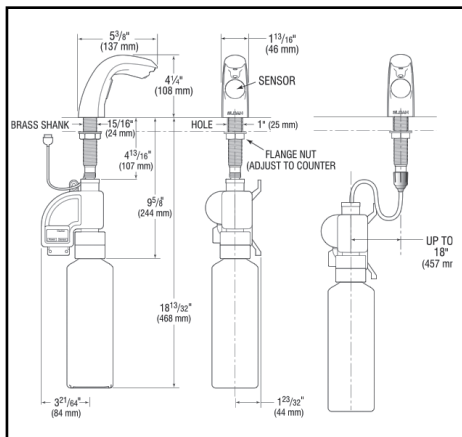


Part No. **94010**



### Parts

- |                    |  |
|--------------------|--|
| 1. <b>94011</b>    | Spout assembly                               |
| 2. <b>94012</b>    | Motor assembly                               |
| 3. <b>94013</b>    | Pick-up tube                                 |
| 4. <b>94014</b>    | Soap bottle                                  |
| 5. <b>94015</b>    | Battery compartment                          |
| 6. <b>30100058</b> | D-Battery (4-each)<br>Requires (4) Batteries |
| 7. <b>94016</b>    | Repair kit tube assembly<br>soap path        |
| 8. <b>94017</b>    | Repair kit tube assembly<br>extension        |
| 9. <b>94018</b>    | Optional AC adapter<br>(sold separately)     |





Toll Free: 800-327-3022



Fax Free: 800-327-5689

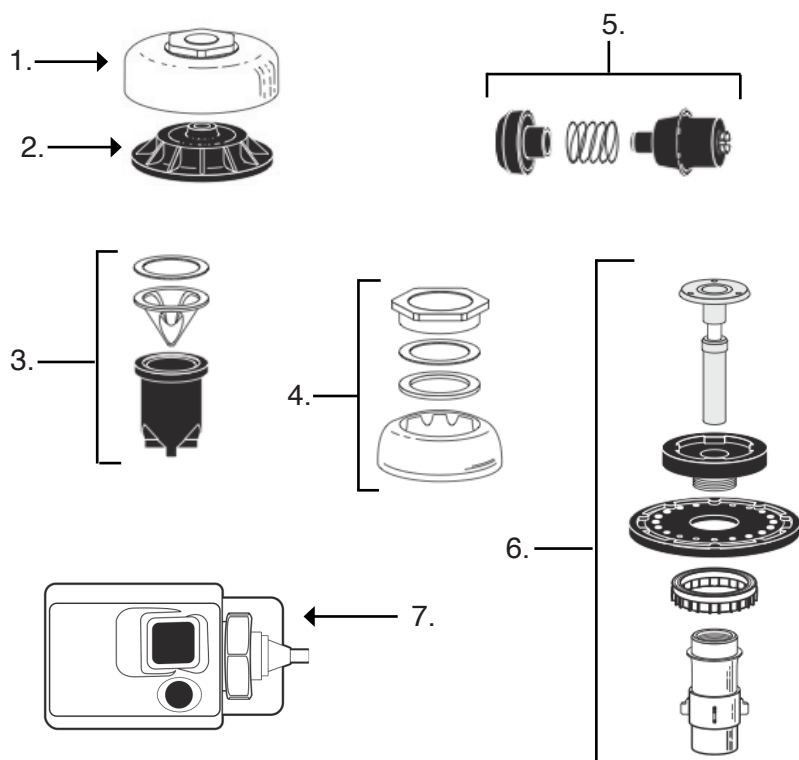
## Sloan OPTIMA Regal 111-XL-SMO Battery Powered Sensor Activated Side Mount Closet Flushometer

- ADA Compliant OPTIMA Battery powered infrared sensor for "No Hands" operation
- Chrome plated infrared Sensor housing
- Angled sensor window
- Manual Override flush button
- Four (4) size C Batteries included (30100057)
- Low Battery flashing LED with optional audio tone
- User in view flashing LED
- Optional 24-Hour sentinel flush
- Infrared sensor range adjustment screw and reset button
- 1" I.P.S. screwdriver Back-Check angle stop
- Control stop plug
- Sweat solder adaptor with cover tube and set screw wall flange
- Adjustable tailpiece
- Vacuum breaker flush connection
- Spud coupling, wall and spud flanges for 1-1/2" top spud
- No external volume adjustment to ensure water conservation
- Stop seat and Vacuum breaker molded from PERMEX

Part No. **92603**

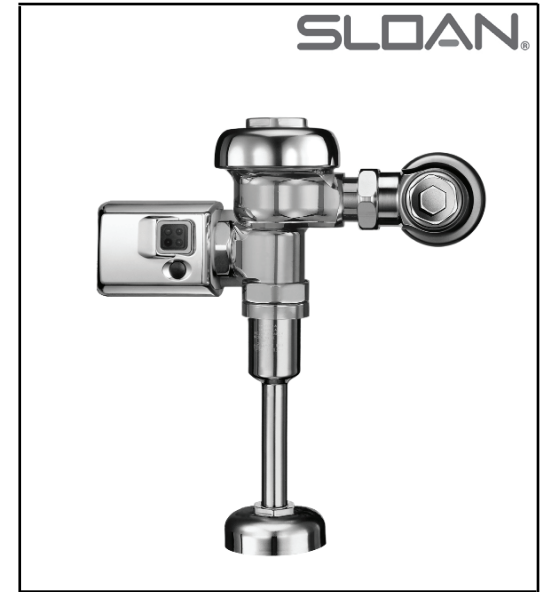
### Parts

1. **40261172** Chrome plated cover
2. **40261124** Inside Cover
3. **40201005** Vacuum Breaker Kit
4. **40266146** 1-1/2" Closet Spud Coupling
5. **9726** 1" Control Stop Repair kit
6. **40261041** 1.6 Closet Diaphragm Inside Low Consumption Repair Kit
7. **40260003** Battery Powered Side Mount Operator for Flushometers.

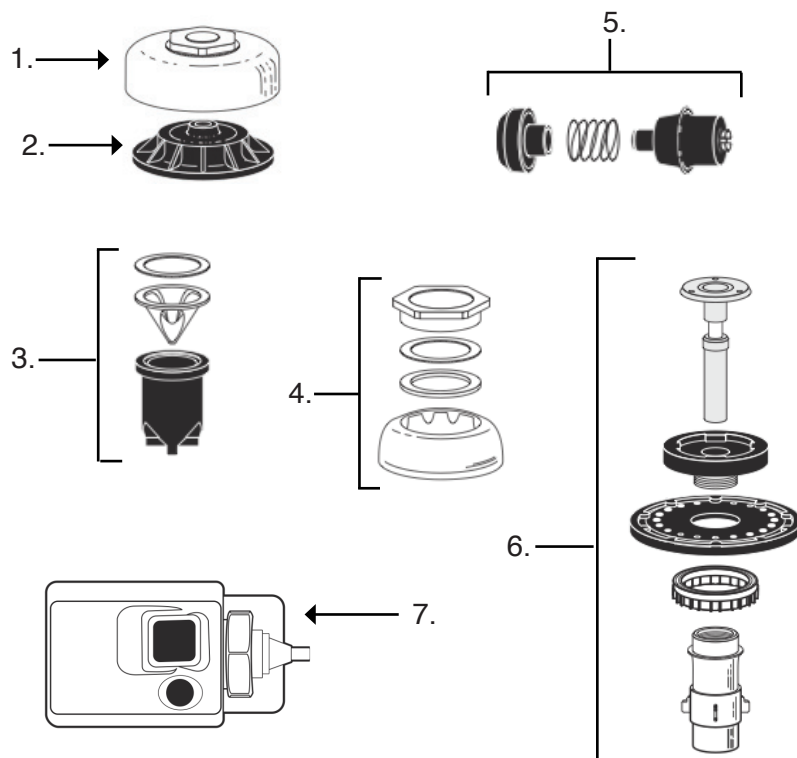




## Sloan OPTIMA Regal 186-XL-SMO Battery Powered Sensor Activated Side Mount Urinal Flushometer

Part No. **92604**

- ADA Compliant OPTIMA Battery powered infrared sensor for "No Hands" operation
- Chrome plated infrared Sensor housing
- Angled sensor window
- Manual Override flush button
- Four (4) size C Batteries included (30100058)
- Low Battery flashing LED with optional audio tone
- User in view flashing LED
- Optional 24-Hour sentinel flush
- Infrared sensor range adjustment screw and reset button
- 3/4" I.P.S. screwdriver Back-Check angle stop
- Control stop plug
- Sweat solder adaptor with cover tube and set screw wall flange
- Adjustable tailpiece
- Vacuum breaker flush connection
- Spud coupling, wall and spud flanges for 3/4" top spud
- No external volume adjustment to ensure water conservation
- Stop seat and Vacuum breaker molded from PERMEX



### Parts

1. **40261172** Chrome plated cover
2. **40261124** Inside Cover
3. **40201005** Vacuum Breaker Kit
4. **40266125** 3/4" Urinal Spud Coupling
5. **9727** 3/4" Control Stop Repair kit Pre-1996
6. **9726** 1" Control Stop Repair kit After-1996
7. **40261044** 1.0 Urinal Diaphragm Inside Low Consumption Repair Kit
8. **40260003** Battery Powered Side Mount Operator for Flushometers.

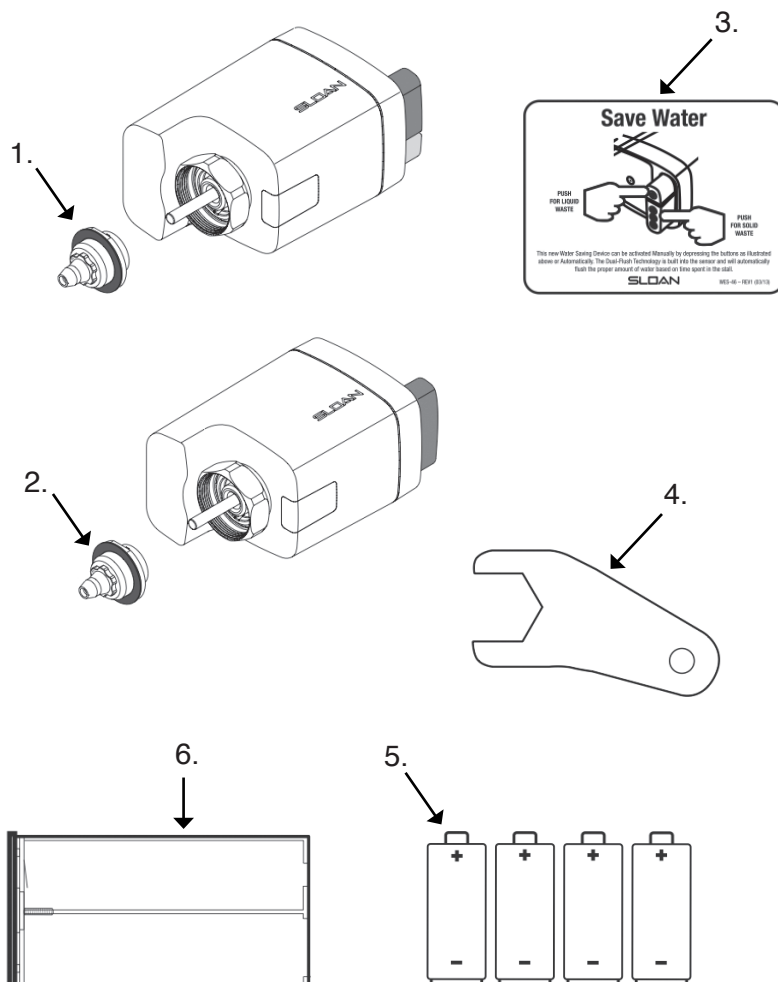
Toll Free: 800-327-3022



Fax Free: 800-327-5689

## Sloan OPTIMA Plus Dual Flush And Single Flush Battery Powered Sensor Activated Side Mount Unit

- ADA Compliant OPTIMA Battery powered infrared sensor for “No Hands” operation
- Chrome plated metal infrared Sensor housing
- Non-hold open true mech. override button
- Initial set-up range indicator light (first 10 min.)
- Four (4) size AA Alkaline batteries included
- “Low” Flashing LED
- “User in view” Flashing LED
- Installation tools included

Part No. **94000**Part No. **4026003**

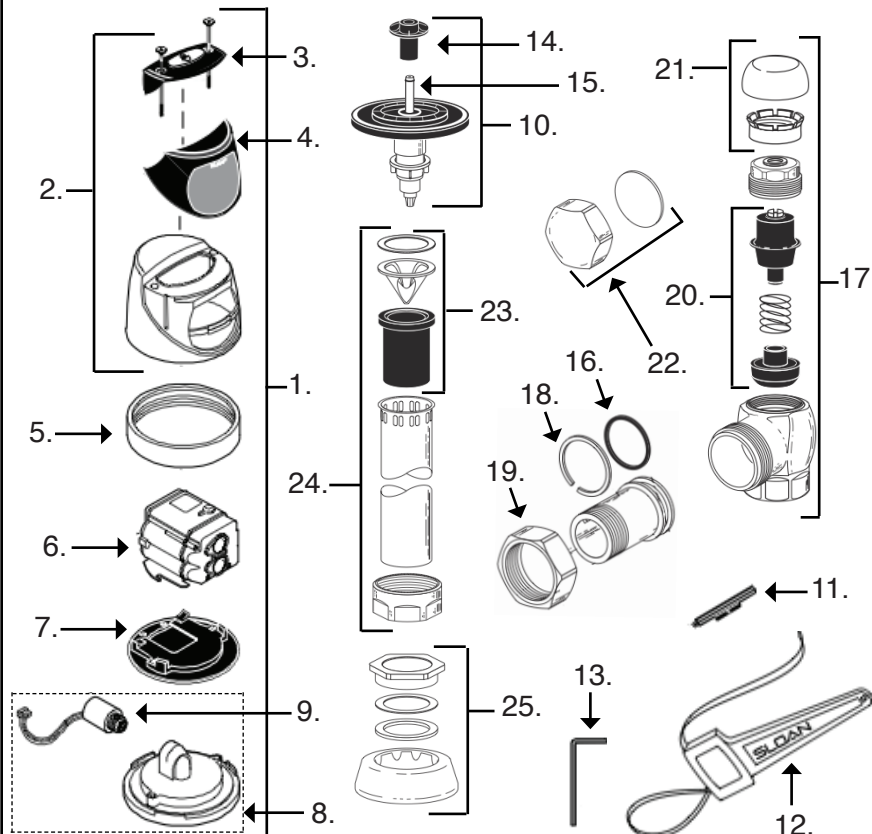
### Parts

- |                    |                                     |
|--------------------|-------------------------------------|
| 1. <b>94001</b>    | Dual-flush sleeve assembly          |
| 2. <b>94002</b>    | Single-flush sleeve assembly        |
| 3. <b>94003</b>    | Dual-flush Wall plate               |
| 4. <b>9298</b>     | Collar wrench                       |
| 5. <b>30100044</b> | AA-Battery (1-each)<br>(4) required |
| 6. <b>94004</b>    | Battery tray assembly               |



## Sloan G2 Optima Plus 8111 Battery Powered Sensor Activated Flushometer for Floor Mounted or Wall hung Toilets

- PERMEX Synthetic diaphragm with dual filtered fixed bypass
- Flex tube diaphragm designed for improved life.
- ADA compliant Optima plus battery powered infrared sensor for automatic "No Hands" operation
- Infrared sensor with multiple focused, lobular sensing fields for high and low target detection.
- Engineered metal cover with replaceable lens window
- User friendly three (3) second flush delay
- Courtesy flush override button
- Four (4) size AA batteries factory installed (30100044)
- Low battery flashing LED
- Infrared sensor range adjustment screw
- Free spinning vandal resistant stop cap
- Adjustable taipiece
- High back pressure vacuum breaker flush connection
- Spud coupling and flange for 1-1/2" top spud
- Fixed metering bypass and no external volume adjustment to ensure water conservation.

Part No. **92606****Closet 1.6**

### Parts

1. **92640** Cover / Ring / Sensor Assy.
2. **40260322** Cover Assy.
3. **92645** Override button Assy.
4. **40268862** Lens window cover
5. **40268849** Locking ring
6. **40261290** Electric module-water closet (blue)
7. **92649** Cover rest plate
8. **92676** Inside Cover Assy.
9. **40261360** Isolated Solenoid
10. **40265001** Flex tube diaphragm kit Closet
11. **92671** Trimpot Screwdriver
12. **92672** Strap Wrench
13. **92677** 7/64" Hex Wrench
14. **92665** Green regulator 1.6 gpf
15. **40260005** O-ring
16. **40950069** O-ring
17. **40268029** 1" Screwdriver stop complete
18. **40268381** Lock Ring
19. **40268854** Coupling Nut
20. **9726** 1" Screwdriver stop repair Kit
21. **40268855** 1" Vandal proof stop cap
22. **40268853** Handle cap (metal)
23. **40201005** Vacuum breaker repair kit
24. **40261040** 1-1/2" x 9" Vacuum breaker
25. **40266146** 1-1/2" CP Spud Coupling

Toll Free: 800-327-3022



Fax Free: 800-327-5689

## Sloan G2 OPTIMA Plus 8186 Battery Powered Sensor Activated Flushometer for Floor Mounted or Wall hung Toilets

Part No. 92607

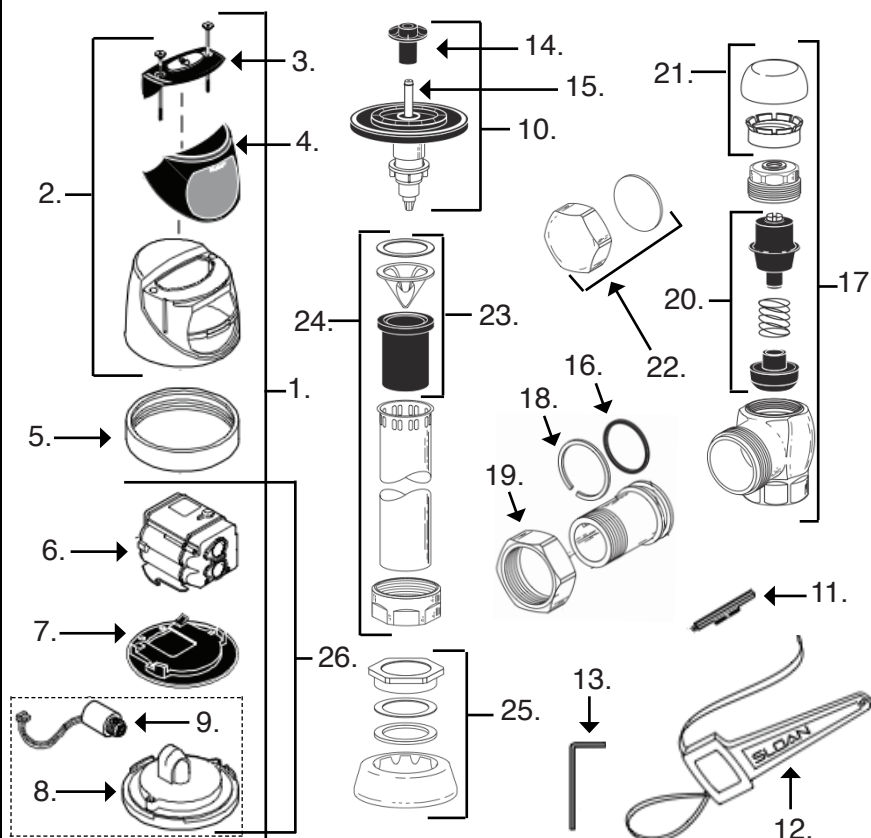


- PERMEX Synthetic diaphragm with dual filtered fixed bypass
- Flex tube diaphragm designed for improved life.
- ADA compliant Optima plus battery powered infrared sensor for automatic "No Hands" operation
- Infrared sensor with multiple focused, lobular sensing fields for high and low target detection.
- Engineered metal cover with replaceable lens window
- User friendly three (3) second flush delay
- Courtesy flush override button
- Four (4) size AA batteries factory installed (30100044)
- Low battery flashing LED
- Infrared sensor range adjustment screw
- Free spinning vandal resistant stop cap
- Adjustable taipiece
- High back pressure vacuum breaker flush connection
- Spud coupling and flange for 3/4" top spud
- Fixed metering bypass and no external volume adjustment to ensure water conservation.



### Parts

1. **92641** Cover / Ring / Sensor Assy.
2. **40260322** Cover Assy.
3. **92645** Override button Assy.
4. **40268862** Lens window cover
5. **40268849** Locking ring
6. **92648** Electric module-water Urinal
7. **92649** Cover rest plate
8. **92676** Inside Cover Assy.
9. **40261360** Isolated Solenoid
10. **40265000** Flex tube diaphragm kit Urinal
11. **92671** Trimptop Screwdriver
12. **92672** Strap Wrench
13. **92677** 7/64" Hex Wrench
14. **92665** Green regulator 1.0 gpf
15. **40260005** O-ring
16. **40950069** O-ring
17. **9701** 3/4" screwdriver stop complete
18. **40268381** Lock Ring
19. **40268854** Coupling Nut
20. **9726** Screwdriver stop Repair Kit
21. **9737** 3/4" Vandal proof stop cap
22. **40268853** Handle cap (metal)
23. **40201005** Vacuum breaker repair kit
24. **40263005** 3/4" x 9" Vacuum breaker
25. **40266125** 3/4" CP Spud Coupling
26. **40261179** Urinal module assembly







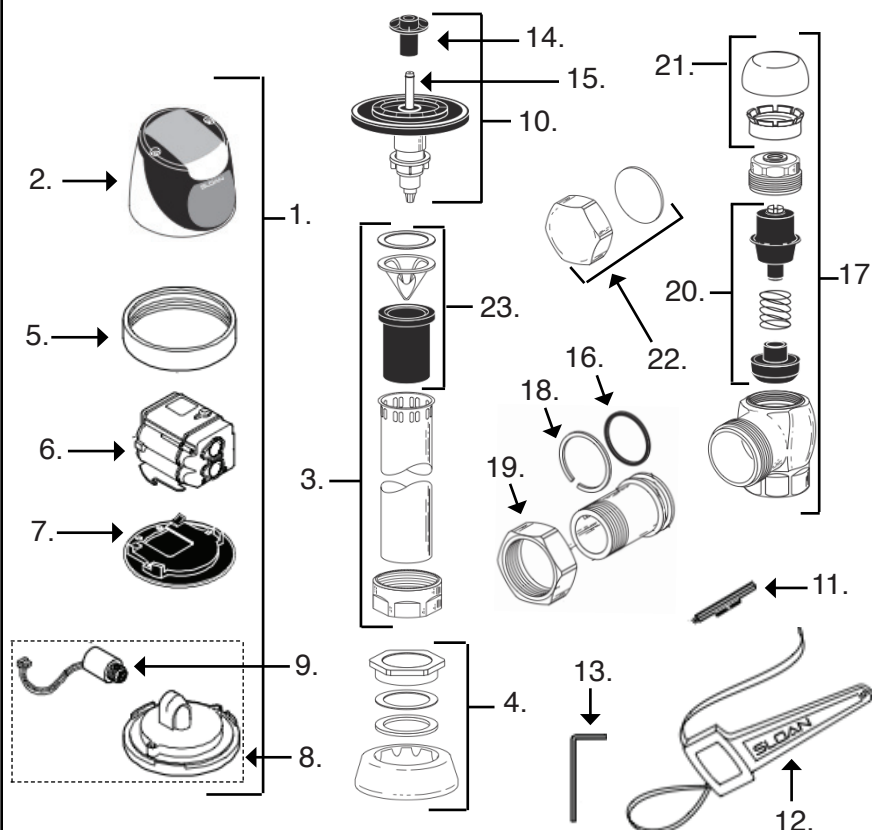
## Sloan SOLIS 8111 Solar Powered Sensor Activated Closet Flushometer for Floor Mounted or Wall hung Toilets

- PERMEX Synthetic diaphragm with dual filtered fixed bypass
- Flex tube diaphragm designed for improved life.
- ADA compliant Sloan Solis Solar powered infrared sensor for automatic "No Hands" operation
- Infrared sensor with multiple focused, lobular sensing fields for high and low target detection.
- Engineered metal cover with replaceable lens window
- User friendly three (3) second flush delay
- Courtesy flush override button
- Four (4) size AA battery back-up power source (30100044)
- Low battery flashing LED
- Infrared sensor range adjustment screw
- Free spinning vandal resistant stop cap
- Adjustable tapiece
- High back pressure vacuum breaker flush connection
- Spud coupling and flange for 1-1/2" top spud
- Fixed metering bypass and no external volume adjustment to ensure water conservation.

Part No. **92608**

### Parts

1. **92972** Sloan 1.6 closet retro kit
2. **9351** Cover Assy.
3. **40261040** 1-1/2" x 9" Vacuum breaker
4. **40266146** 1-1/2" CP Spud Coupling
5. **40268849** Locking ring
6. **9361** Sensor Assy. - water closet
7. **92649** Cover rest plate
8. **92676** Inside Cover Assy.
9. **40261360** Isolated Solenoid
10. **40265001** Flex tube diaphragm kit Closet
11. **92671** Trimpot Screwdriver
12. **92672** Strap Wrench
13. **92677** 7/64" Hex Wrench
14. **92665** Green regulator 1.6 gpf
15. **40260005** O-ring
16. **40950069** O-ring
17. **40268029** 1" Screwdriver stop complete
18. **40268381** Lock Ring
19. **40268854** Coupling Nut
20. **9726** 1" Screwdriver stop repair Kit
21. **40268855** 1" Vandal proof stop cap
22. **40268853** Handle cap (metal)
23. **40201005** Vacuum breaker repair kit





Toll Free: 800-327-3022



Fax Free: 800-327-5689

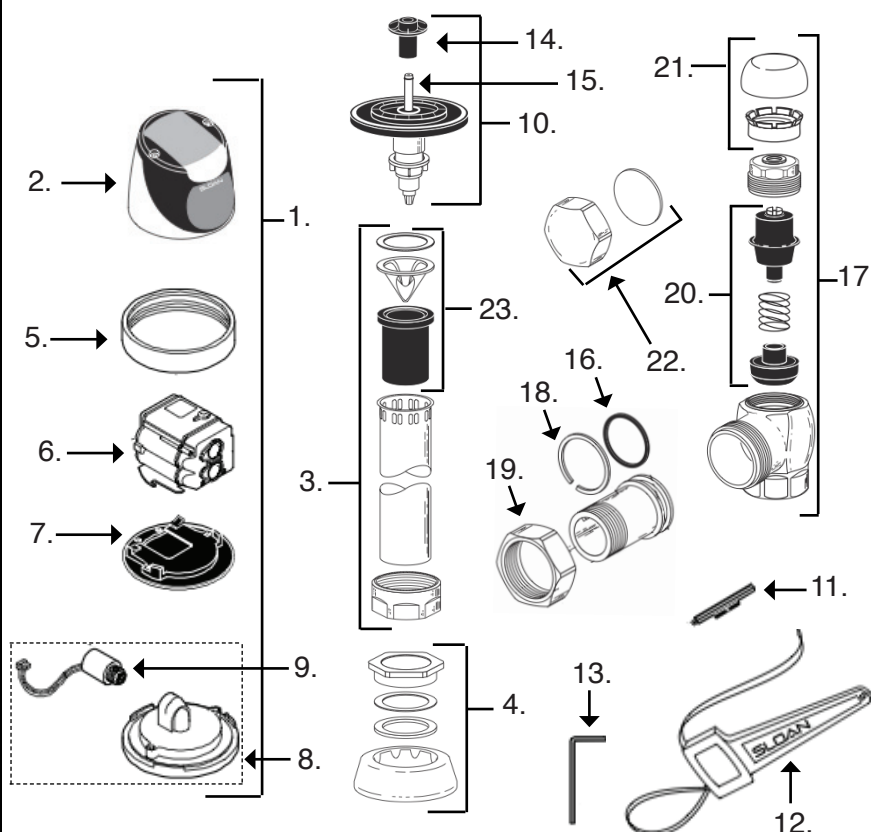
## Sloan SOLIS 8186 Solar Powered Sensor Activated Urinal Flushometer for Floor Mounted or Wall hung Toilets

- PERMEX Synthetic diaphragm with dual filtered fixed bypass
- Flex tube diaphragm designed for improved life.
- ADA compliant Sloan Solis Solar powered infrared sensor for automatic "No Hands" operation
- Infrared sensor with multiple focused, lobular sensing fields for high and low target detection.
- Engineered metal cover with replaceable lens window
- User friendly three (3) second flush delay
- Courtesy flush override button
- Four (4) size AA battery back-up power (30100044)
- Low battery flashing LED
- Infrared sensor range adjustment screw
- Free spinning vandal resistant stop cap
- Adjustable taipiece
- High back pressure vacuum breaker flush connection
- Spud coupling and flange for 3/4" top spud
- Fixed metering bypass and no external volume adjustment to ensure water conservation.

Part No. **92609**

### Parts

1. **92973** Sloan 1.0 urinal retro kit
2. **9351** Cover Assy.
3. **40263005** 3/4" x 9" Vacuum breaker
4. **40266125** 3/4" CP Spud Coupling
5. **40268849** Locking ring
6. **9362** Sensor Assy. - Urinal
7. **92649** Cover rest plate
8. **92676** Inside Cover Assy.
9. **40261360** Isolated Solenoid
10. **40265000** Flex tube diaphragm kit Urinal
11. **92671** Trimpot Screwdriver
12. **92672** Strap Wrench
13. **92677** 7/64" Hex Wrench
14. **92665** Green regulator 1.0 gpf
15. **40260005** O-ring
16. **40950069** O-ring
17. **9701** 3/4" Screwdriver stop complete
18. **40268381** Lock Ring
19. **40268854** Coupling Nut
20. **9726** Screwdriver stop repair Kit
21. **9737** 3/4" Vandal proof stop cap
22. **40268853** Handle cap (metal)
23. **40201005** Vacuum breaker repair kit

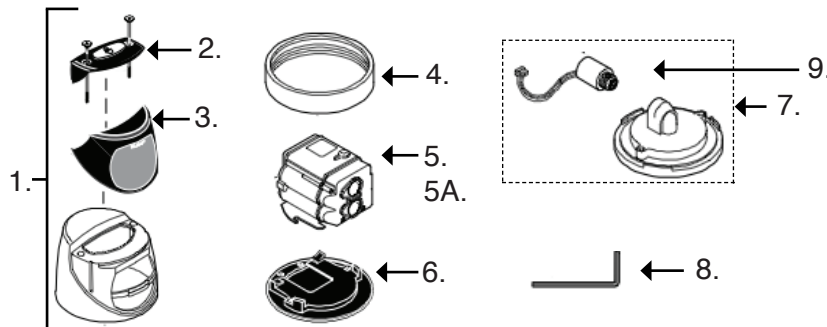




## Sloan G2 OPTIMA Plus RESS-C Exposed Battery Powered Sensor Activated Retrofit Kit for Closet Flushometer

Part No. 92976

- PERMEX Synthetic diaphragm with dual filtered fixed bypass
- Flex tube diaphragm designed for improved life.
- ADA compliant Optima plus battery powered infrared sensor for automatic "No Hands" operation
- Infrared sensor with multiple focused, lobular sensing fields for high and low target detection.
- Engineered metal cover with replaceable lens window
- User friendly three (3) second flush delay
- Courtesy flush override button
- Four (4) size AA batteries factory installed (30100044)
- Low battery flashing LED
- Infrared sensor range adjustment screw
- Free spinning vandal resistant stop cap



1. **40260322** Cover Assy.
2. **92645** Override button Assy.
3. **40268862** Lens window cover
4. **40268849** Locking ring
5. **40261290** Electric module closet
- 5A. **92648** Electric module Urinal
6. **92649** Cover rest plate
7. **92676** Inside Cover Assy.
8. **92677** 7/64" Hex Wrench
9. **40261360** Isolated Solenoid

TMS Part No. 92970



## Sloan G2 OPTIMA Plus RESS-U Exposed Battery Powered Sensor Activated Retrofit Kit for Urinal Flushometer

- PERMEX Synthetic diaphragm with dual filtered fixed bypass
- Flex tube diaphragm designed for improved life.
- ADA compliant Optima plus battery powered infrared sensor for automatic "No Hands" operation
- Infrared sensor with multiple focused, lobular sensing fields for high and low target detection.
- Engineered metal cover with replaceable lens window
- User friendly three (3) second flush delay
- Courtesy flush override button
- Four (4) size AA batteries factory installed
- Low battery flashing LED
- Infrared sensor range adjustment screw
- Free spinning vandal resistant stop cap



Toll Free: 800-327-3022



Fax Free: 800-327-5689

## Sloan ECOS RESS-C-1.6/1.1 Dual Flush Battery Powered Sensor Activated Retrofit Kit for Exposed Closet Flushvalve

Part No. 92971



- PERMEX Synthetic diaphragm with dual filtered fixed bypass
- Flex tube diaphragm designed for improved life.
- ADA compliant Optima plus battery powered infrared sensor for automatic "No Hands" operation
- Infrared sensor with multiple focused, lobular sensing fields for high and low target detection.
- Engineered metal cover with replaceable lens window
- User friendly three (3) second flush delay
- Courtesy flush override button
- Four (4) size AA batteries factory installed (30100044)
- Low battery flashing LED
- Infrared sensor range adjustment screw
- Free spinning vandal resistant stop cap

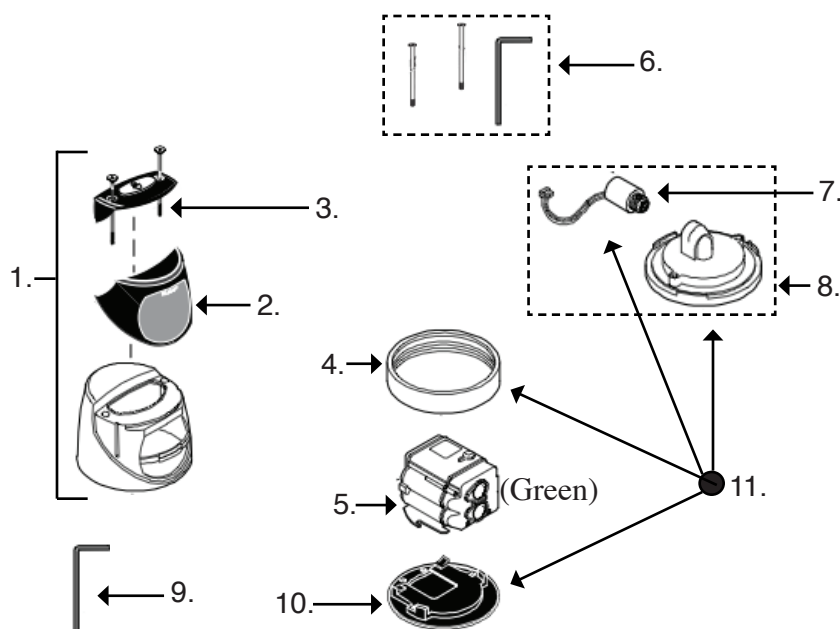


\* *If the user is present for less than one minute and leaves the sensing zone or chooses the small override button, a reduced flush initiates 1.1 gpf eliminating liquid and paper waste, saving 1/2 gallon of water.*

\* *If the user is present for greater than one minute and leaves the zone or chooses the large override button, the full flush initiates 1.6 gpf eliminating solid waste and paper.*

### Parts

- |                    |   |
|--------------------|---|
| 1. <u>9355</u>     | Cover Assy.   |
| 2. <u>40268862</u> | Lens window cover                                       |
| 3. <u>9356</u>     | Override button Assy.                                   |
| 4. <u>40268849</u> | Locking ring  |
| 5. <u>9357</u>     | Electric module-Dual Flush (Green)                      |
| 6. <u>9358</u>     | Screws (2) and Hex wrench                               |
| 7. <u>40261360</u> | Isolated Solenoid                                       |
| 8. <u>92676</u>    | Inside cover Assy.                                      |
| 9. <u>92677</u>    | 7/64" Hex Wrench  |
| 10. <u>92649</u>   | Cover rest plate  |
| 11. <u>9359</u>    | Metal Inner cover repair kit includes items, 4,7,8 & 10 |



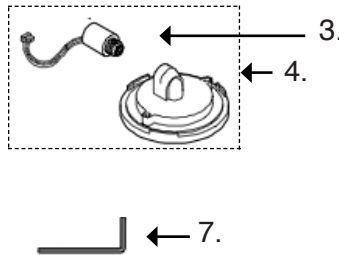
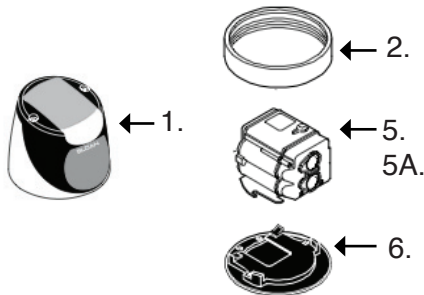


## Sloan SOLIS RESS-C Exposed Solar Powered Sensor Activated Retrofit Kit for Closet Flushometer

Part No. **92972**



- PERMEX Synthetic diaphragm with dual filtered fixed bypass
- Flex tube diaphragm designed for improved life.
- ADA compliant Sloan Solis Solar infrared sensor for automatic "No Hands" operation
- Infrared sensor with multiple focused, lobular sensing fields for high and low target detection.
- Engineered metal cover with replaceable lens window
- User friendly three (3) second flush delay
- Courtesy flush override button
- Four (4) size AA batteries back-up power source (30100044)
- Low battery flashing LED
- Infrared sensor range adjustment screw
- Free spinning vandal resistant stop cap



- |                    |                      |
|--------------------|----------------------|
| 1. <b>9360</b>     | Cover Assy. (Solar)  |
| 2. <b>9364</b>     | Locking ring         |
| 3. <b>40261360</b> | Isolated Solenoid    |
| 4. <b>92676</b>    | Inside Cover Assy.   |
| 5. <b>9361</b>     | Sensor module Closet |
| 5A. <b>9362</b>    | Sensor module Urinal |
| 6. <b>92649</b>    | Cover rest plate     |
| 7. <b>92677</b>    | 7/64" Hex Wrench     |

Part No. **92973**



## Sloan SOLIS RESS-U Exposed Solar Powered Sensor Activated Retrofit Kit for Urinal Flushometer

- PERMEX Synthetic diaphragm with dual filtered fixed bypass
- Flex tube diaphragm designed for improved life.
- ADA compliant Sloan Solis Solar infrared sensor for automatic "No Hands" operation
- Infrared sensor with multiple focused, lobular sensing fields for high and low target detection.
- Engineered metal cover with replaceable lens window
- User friendly three (3) second flush delay
- Courtesy flush override button
- Four (4) size AA batteries back-up power source (30100044)
- Low battery flashing LED
- Infrared sensor range adjustment screw
- Free spinning vandal resistant stop cap



Toll Free: 800-327-3022



Fax Free: 800-327-5689

## Sloan SOLIS RESS-C-1.6/1.1 Dual Flush Solar Powered Sensor Activated Retrofit Kit for Closet Flushometer

Part No. **92974****SLOAN.**

**RESS-C-1.6/1.1**  
**Closet 1.6/1.1 Dual Flush**

- PERMEX Synthetic diaphragm with dual filtered fixed bypass
- Flex tube diaphragm designed for improved life.
- ADA compliant Sloan Solis Solar infrared sensor for automatic “No Hands” operation
- Infrared sensor with multiple focused, lobular sensing fields for high and low target detection.
- Engineered metal cover with replaceable lens window
- User friendly three (3) second flush delay
- Courtesy flush override button
- Four (4) size AA batteries back-up power source (30100044)
- Low battery flashing LED
- Infrared sensor range adjustment screw
- Free spinning vandal resistant stop cap
- Reduces water volume by up to 30% when a reduced flush occurs.
- Initial set-up range indicator light ( first 10 minutes )

*Solar Powered. The sensor assembly is powered by a solar cell that will harvest power from artificial indoor light, either incandescent or florescent light, and use it as the energy source. The solar cell can provide approximately 100% power with 650 illuminance*

- |                    |                          |
|--------------------|--------------------------|
| 1. <b>9363</b>     | Cover Assy. “Dual Flush” |
| 2. <b>40268849</b> | Locking ring             |
| 3. <b>40261360</b> | Isolated Solenoid        |
| 4. <b>92676</b>    | Inside Cover Assy.       |
| 5. <b>9361-DF</b>  | Sensor module Closet     |
| 6. <b>92649</b>    | Cover rest plate         |
| 7. <b>92677</b>    | 7/64” Hex Wrench         |



← 1.



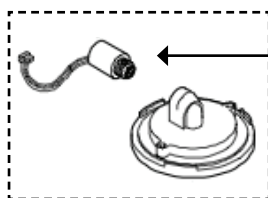
← 2.



← 5.



← 6.



← 3.

← 4.



← 7.



# Sloan OPTIMA EHD-501-W Electronic Sensor Activated Hand Dryer for Surface Mounting - White



## Specifications

- Series commutated, through-flow discharge, vacuum type motor/blower combination
- Infrared optical sensor with thirty-five (35) second lockout feature.
- Air velocity of 16,000 LFM (linear feet per minute) at an outlet temperature of 135 F/57 C at a 72 F/22 C ambient room temperature
- Decibel rating of 78-80 db
- Heating element construction of Nichrome wire and protected by an automatic resetting thermostat.
- One piece heavy-duty rib reinforced die cast zinc alloy housing
- Chip-proof electrostatically-applied epoxy finish
- Tamper-proof cover fasteners are included
- 11-3/4" Wide x 12-3/4" Tall x 6-3/4" Deep

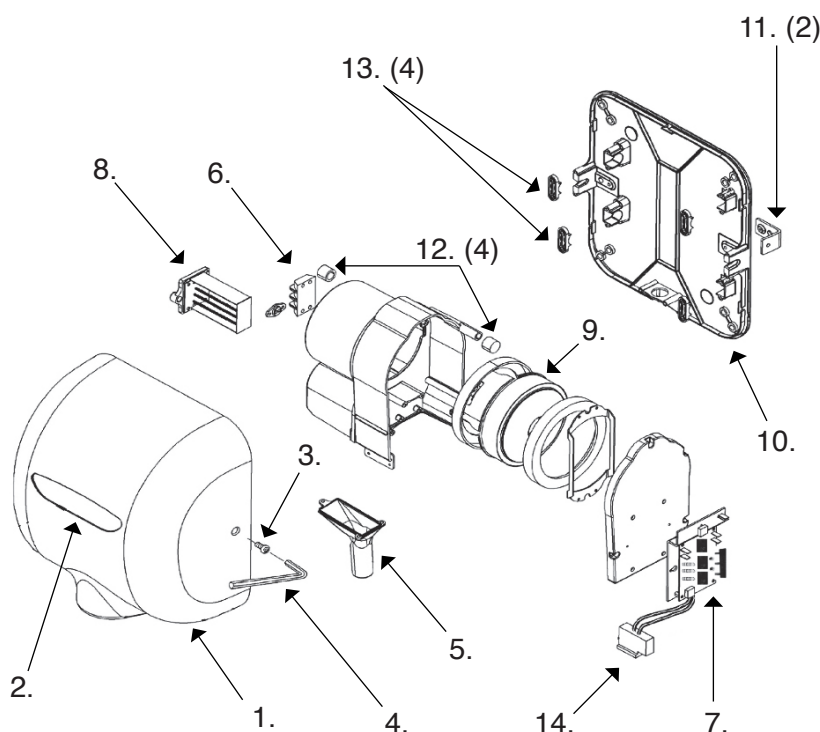
Part No. **92975**



*To order parts please include:*

Serial Number  
Model Number  
& Voltage

## Parts



1. Cover (includes name plate)
2. Nameplate
3. Tamper-proof fastener
4. Tamper-proof wrench
5. Air Outlet (includes gasket & fasteners)
6. Terminal Block (includes fasteners)
7. Control Assy. & Sensor
8. Heating Element Assy.
9. Motor Assy. ( includes gaskets & wire harness)
10. Wall Plate Assy. (includes cover mounting brackets)
11. Cover Mounting Brackets
12. Housing Grommet
13. Housing Retainer
14. Optic Assy. (Sensor)



Toll Free: 800-327-3022



Fax Free: 800-327-5689

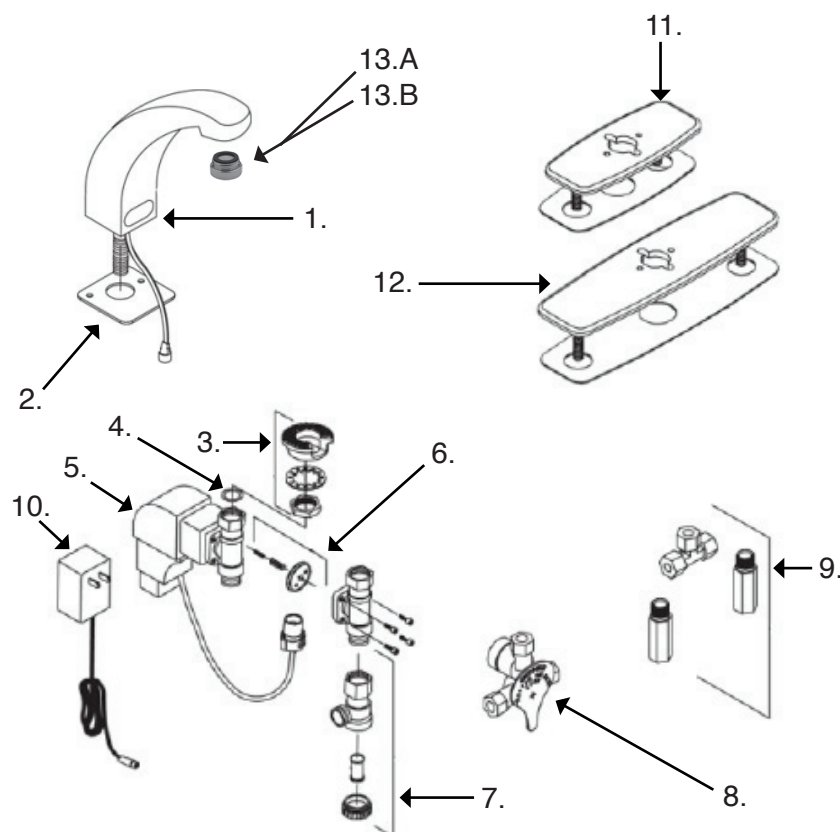
## ZURN Z6913-XL Sensor Activated Battery Powered AquaSense Faucet

Part No. **92795**

- **ADA compliant**, battery powered, chrome plated sensor faucet for retrofit and new construction.
- **Flow Rate**  
1.5 gpm Vandal Resistant Aerator
- **Occupant Detection**  
Infrared convergence-type proximity sensor thirty second time out feature.
- **Spout module**  
Chrome plated cast brass
- **Also includes**  
In-line filter  
4 "AA" batteries (30100044)  
Inlet for a 1/2" (13) ball riser  
Single supply hose



### Parts



1. **92797** Spout Assy. with sensor
2. **92798** Z6913 Base plate gasket
3. **92783** Mounting Kit
4. **92784** Shank connecting gasket
5. **92785** Electronic box with solenoid
6. **92786** Solenoid rebuild kit (Diaphragm, plunger & spring)
7. **92787** Filter kit
8. **32990370** Mixing valve with filter
9. **92789** Mixing tee with filters & backchecks
10. **92790** Optional plug-in power converter
11. **92791** 4" Cast cover plate with gasket
12. **92792** 8" Cast cover plate with gasket
- 13.A **40110166** Male Vandal proof Aerator
- 13.B **40110435** Male 1.5 Aerator



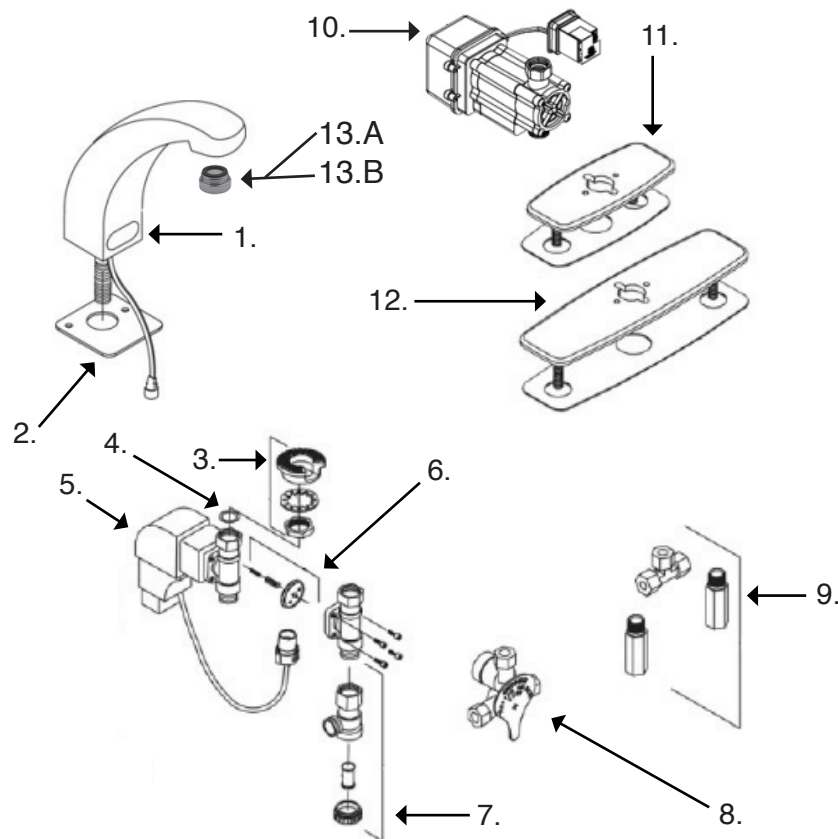
## ZURN Z6913-XL-GEN Sensor Activated Lavatory Faucet with Hydroelectric Generator

Part No. **92796**

- **ADA compliant**, Chrome plated sensor lavatory faucet for retrofit and new construction.
- **Flow Rate**  
1.5 gpm vandal resistant aerator
- **Occupant Detection**  
Infrared convergence-type proximity sensor  
thirty second time out feature.
- **Spout module**  
Chrome plated cast brass
- **Also includes**  
In-line filter  
Inlet for a 1/2" (13) ball riser  
(4) "AA" batteries (30100044)
- **Power Supply**  
Self sustaining hydroelectric generator



### Parts



1. **92797** Spout Assy. with sensor
2. **92798** Z6913 Base plate gasket
3. **92783** Mounting Kit
4. **92784** Shank connecting gasket
5. **92785** Electronic box with solenoid
6. **92786** Solenoid rebuild kit (Diaphragm, plunger & spring)
7. **92787** Filter kit
8. **32990370** Mixing valve with filter
9. **92789** Mixing tee with filters & backchecks
10. **92793** Hydrogenerator
11. **92791** 4" Cast cover plate with gasket
12. **92792** 8" Cast cover plate with gasket
- 13.A **40110166** Male Vandal proof Aerator
- 13.B **40110435** Male 1.5 Aerator

Toll Free: 800-327-3022



Fax Free: 800-327-5689

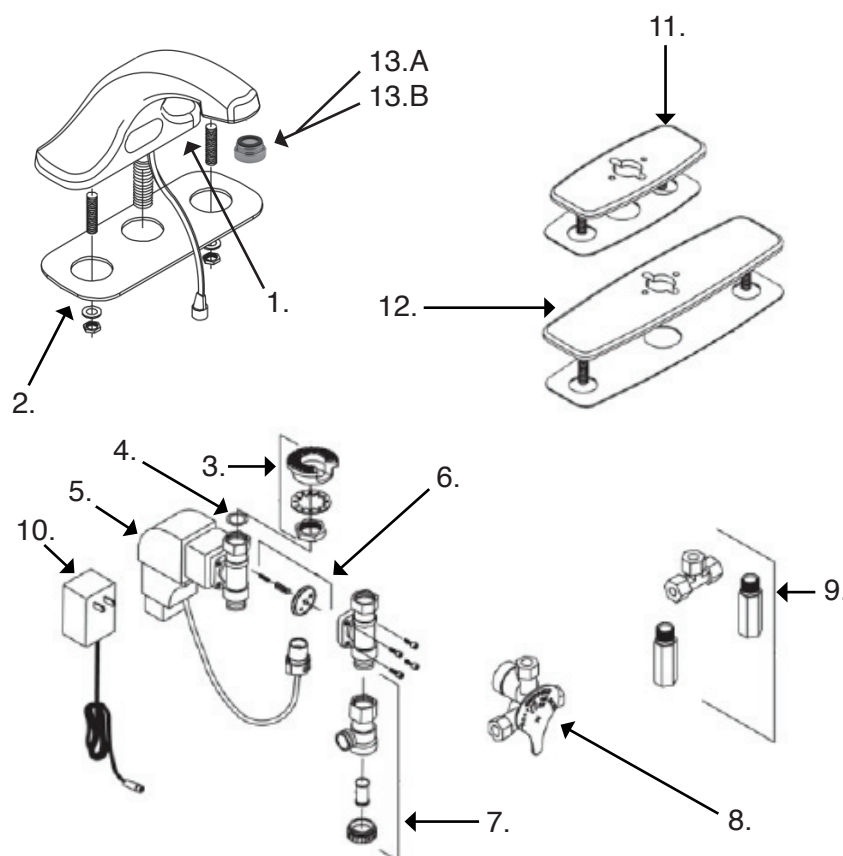
## ZURN Z6915-XL Sensor Activated Battery Powered AquaSense Faucet

Part No. **92841**

- **ADA compliant**, battery powered, chrome plated sensor faucet for retrofit and new construction.
- **Flow Rate**  
1.5 gpm Vandal Resistant Aerator
- **Occupant Detection**  
Infrared convergence-type proximity sensor  
thirty Second Time out feature.
- **Spout module**  
Chrome plated Cast Brass
- **Also includes**  
In-line filter  
4 "AA" batteries (30100044)  
Inlet for a 1/2" (13) ball riser  
Single supply hose



### Parts



- |                      |   |
|----------------------|---|
| 1. <b>92842</b>      | Spout Assy. with sensor                               |
| 2. <b>92843</b>      | Z6915 Base plate gasket                               |
| 3. <b>92783</b>      | Mounting Kit  |
| 4. <b>92784</b>      | Shank connecting gasket                               |
| 5. <b>92785</b>      | Electronic box with solenoid                          |
| 6. <b>92786</b>      | Solenoid rebuild kit<br>(Diaphragm, plunger & spring) |
| 7. <b>92787</b>      | Filter kit  |
| 8. <b>32990370</b>   | Mixing valve with filter                              |
| 9. <b>92789</b>      | Mixing tee with filters<br>& backchecks               |
| 10. <b>92790</b>     | Optional plug-in power<br>converter                   |
| 11. <b>92791</b>     | 4" Cast cover plate with<br>gasket                    |
| 12. <b>92792</b>     | 8" Cast cover plate with<br>gasket                    |
| 13.A <b>40110166</b> | Male Vandal proof Aerator                             |
| 13.B <b>40110435</b> | Male 1.5 Aerator                                      |



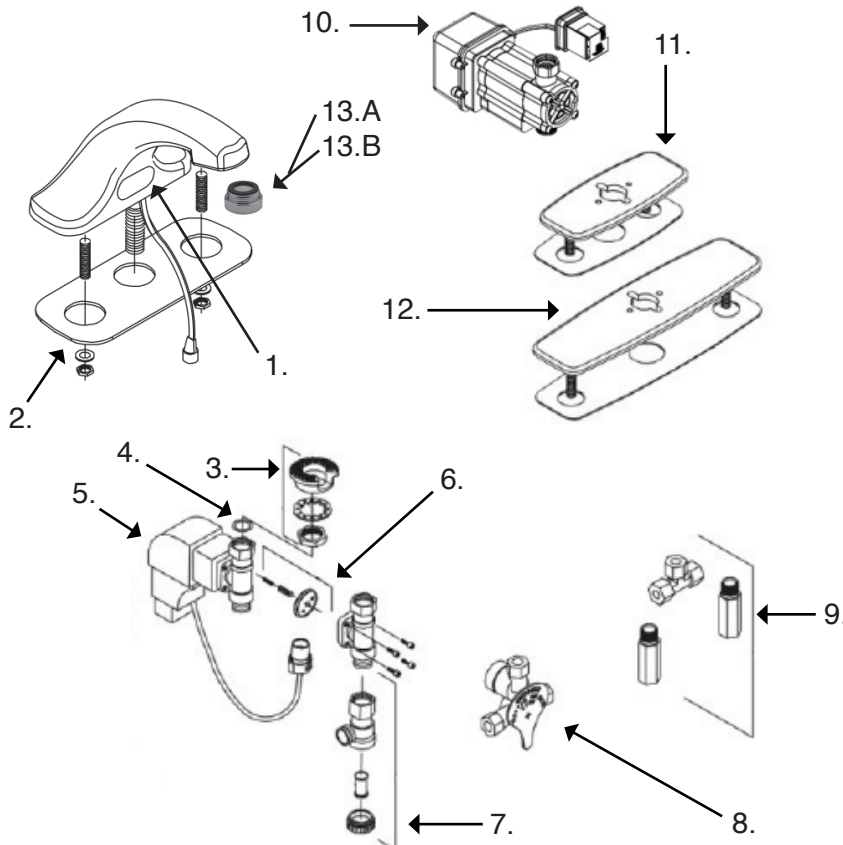
## ZURN Z6915-XL-GEN Sensor Activated Lavatory Faucet with Hydroelectric Generator

- **ADA compliant**, Chrome plated sensor lavatory faucet for retrofit and new construction.
- **Flow Rate**  
1.5 gpm Vandal Resistant Aerator
- **Occupant Detection**  
Infrared convergence-type proximity sensor thirty Second Time out feature.
- **Spout module**  
Chrome plated Cast Brass
- **Also includes**  
In-line filter  
Inlet for a 1/2" (13) ball riser  
(4) "AA" batteries (30100044)
- **Power Supply**  
Self Sustaining hydroelectric Generator

Part No. **92844**

### Parts

- |                      |   |
|----------------------|---|
| 1. <b>92842</b>      | Spout Assy. with sensor                               |
| 2. <b>92843</b>      | Z6915 Base plate gasket                               |
| 3. <b>92783</b>      | Mounting Kit  |
| 4. <b>92784</b>      | Shank connecting gasket                               |
| 5. <b>92785</b>      | Electronic box with solenoid                          |
| 6. <b>92786</b>      | Solenoid rebuild kit<br>(Diaphragm, plunger & spring) |
| 7. <b>92787</b>      | Filter kit  |
| 8. <b>32990370</b>   | Mixing valve with filter                              |
| 9. <b>92789</b>      | Mixing tee with filters<br>& backchecks               |
| 10. <b>92793</b>     | Hydrogenerator  |
| 11. <b>92791</b>     | 4" Cast cover plate with<br>gasket                    |
| 12. <b>92792</b>     | 8" Cast cover plate with<br>gasket                    |
| 13.A <b>40110166</b> | Male Vandal proof Aerator                             |
| 13.B <b>40110435</b> | Male 1.5 Aerator                                      |





Toll Free: 800-327-3022



Fax Free: 800-327-5689

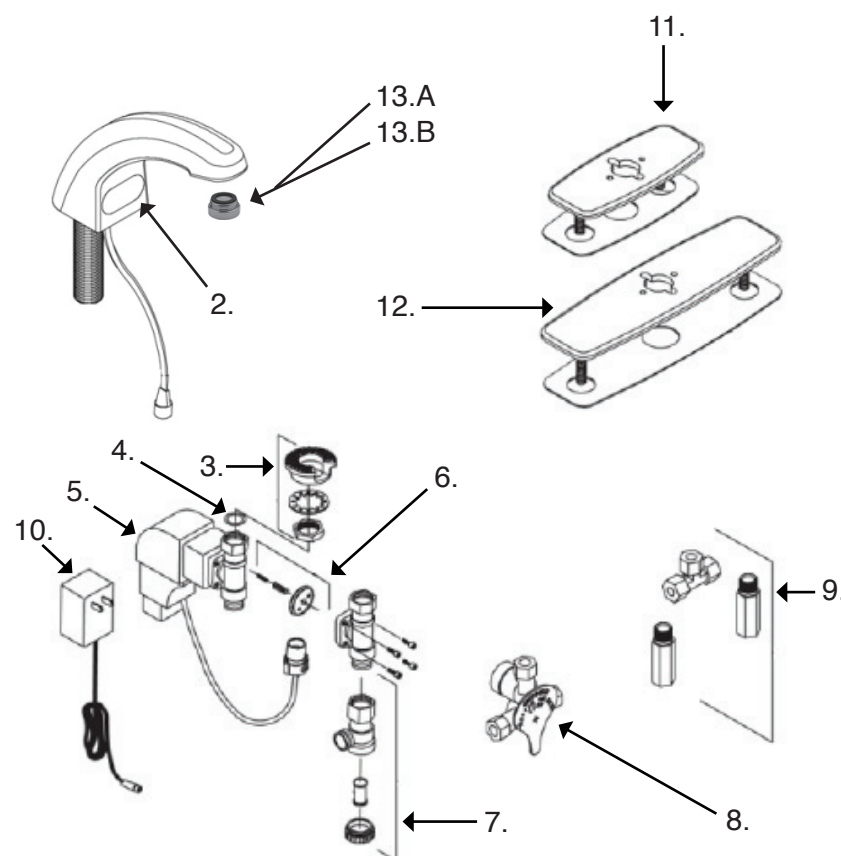
## ZURN Z6914 Sensor Activated Battery Powered AquaSense Faucet

Part No. **92840**

- **ADA compliant**, battery powered, chrome plated sensor faucet for retrofit and new construction.
- **Flow Rate**  
1.5 gpm Vandal Resistant Aerator
- **Occupant Detection**  
Infrared convergence-type proximity sensor  
thirty Second Time out feature.
- **Spout module**  
Chrome plated Cast Brass
- **Also includes**  
In-line filter  
4 "AA" batteries (30100044)  
Inlet for a 1/2" (13) ball riser  
Single supply hose



### Parts



- |                      |   |
|----------------------|---|
| 2. <b>92799</b>      | Spout Assy. with sensor                               |
| 3. <b>92783</b>      | Mounting Kit  |
| 4. <b>92784</b>      | Shank connecting gasket                               |
| 5. <b>92785</b>      | Electronic box with solenoid                          |
| 6. <b>92786</b>      | Solenoid rebuild kit<br>(Diaphragm, plunger & spring) |
| 7. <b>92787</b>      | Filter kit  |
| 8. <b>32990370</b>   | Mixing valve with filter                              |
| 9. <b>92789</b>      | Mixing tee with filters<br>& backchecks               |
| 10. <b>92790</b>     | Optional plug-in power<br>converter                   |
| 11. <b>92791</b>     | 4" Cast cover plate with<br>gasket                    |
| 12. <b>92792</b>     | 8" Cast cover plate with<br>gasket                    |
| 13.A <b>40110166</b> | Male Vandal proof Aerator                             |
| 13.B <b>40110435</b> | Male 1.5 Aerator                                      |





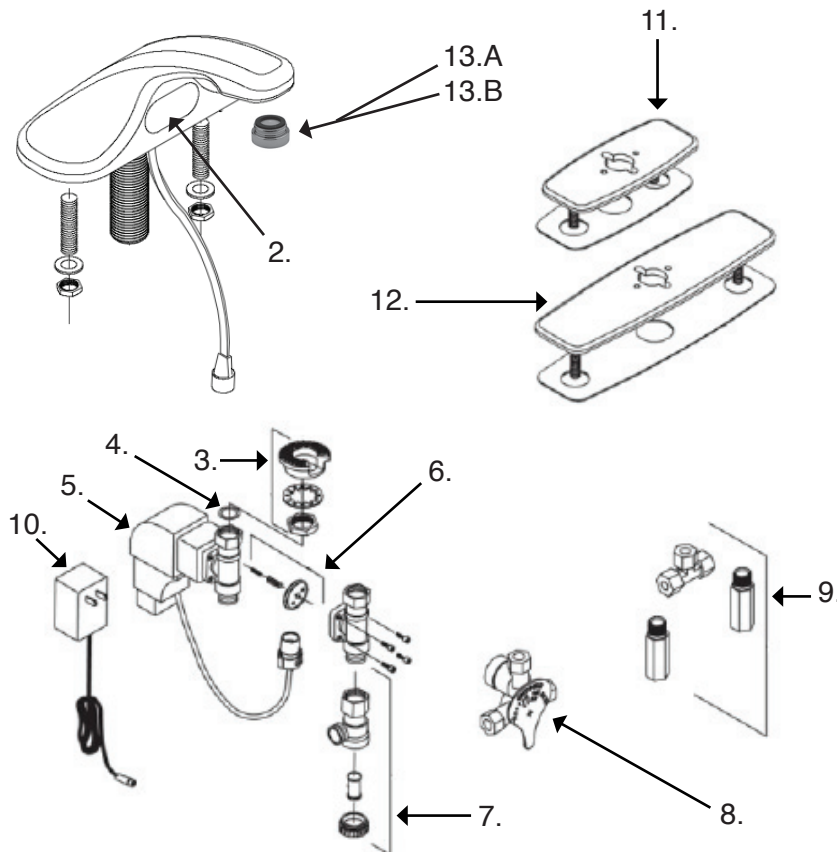
## ZURN Z6917 Sensor Activated Battery Powered AquSense Faucet

Part No. **92845**

- **ADA compliant**, battery powered, chrome plated sensor faucet for retrofit and new construction.
- **Flow Rate**  
1.5 gpm Vandal Resistant Aerator
- **Occupant Detection**  
Infrared convergence-type proximity sensor  
thirty Second Time out feature.
- **Spout module**  
Chrome plated Cast Brass
- **Also includes**  
In-line filter  
4 "AA" batteries (30100044)  
Inlet for a 1/2" (13) ball riser  
Single supply hose



### Parts



- |                             |   |
|-----------------------------|---|
| 2. <b><u>92846</u></b>      | Spout Assy. with sensor                               |
| 3. <b><u>92783</u></b>      | Mounting Kit  |
| 4. <b><u>92784</u></b>      | Shank connecting gasket                               |
| 5. <b><u>92785</u></b>      | Electronic box with solenoid                          |
| 6. <b><u>92786</u></b>      | Solenoid rebuild kit<br>(Diaphragm, plunger & spring) |
| 7. <b><u>92787</u></b>      | Filter kit  |
| 8. <b><u>32990370</u></b>   | Mixing valve with filter                              |
| 9. <b><u>92789</u></b>      | Mixing tee with filters<br>& backchecks               |
| 10. <b><u>92790</u></b>     | Optional plug-in power<br>converter                   |
| 11. <b><u>92791</u></b>     | 4" Cast cover plate with<br>gasket                    |
| 12. <b><u>92792</u></b>     | 8" Cast cover plate with<br>gasket                    |
| 13.A <b><u>40110166</u></b> | Male Vandal proof Aerator                             |
| 13.B <b><u>40110435</u></b> | Male 1.5 Aerator                                      |

Toll Free: 800-327-3022



Fax Free: 800-327-5689

## ZURN Z6930-XL Sensor Activated Battery-Powered Lavatory Faucet

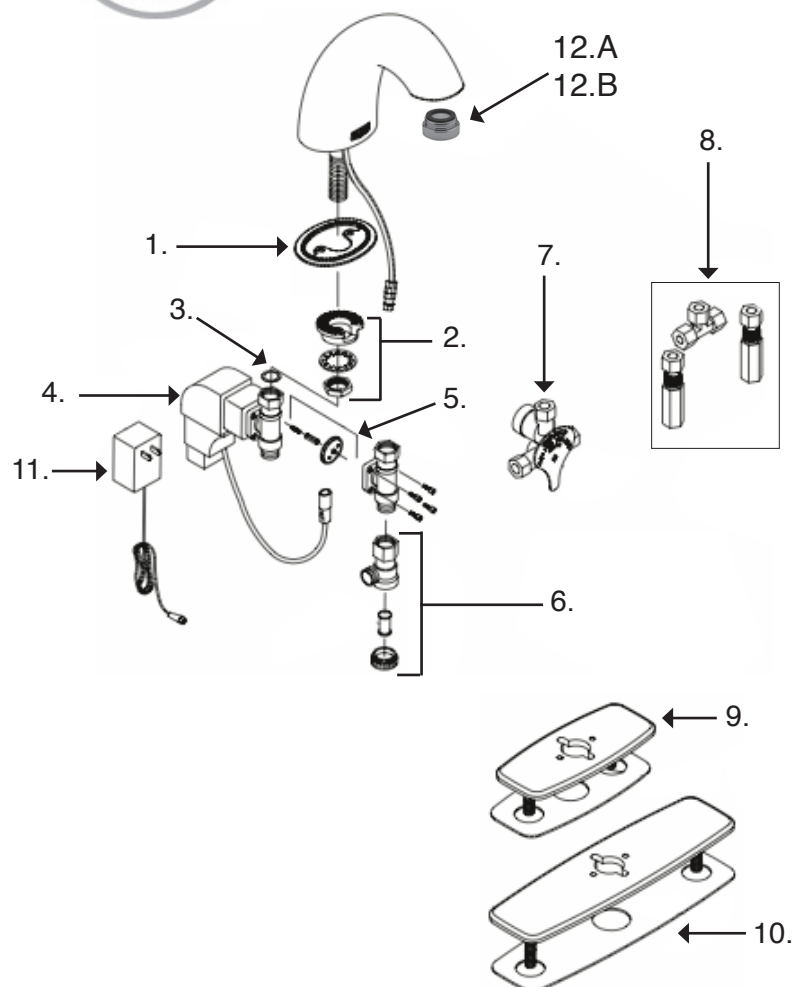
ADA compliant, battery-powered, chrome-plated sensor faucet for retrofit and new construction.

### Engineering Specifications:

- Occupant detection.
- Thirty second time-out feature
- Infrared convergence-type proximity sensor
- (4) "AA" batteries (30100044)
- Chrome-plated cast brass
- Inlet for a 1/2" riser
- Aerators & Sensors lens are hidden from view

Part No. **92891**

### Parts



- |      |                 |  |
|------|-----------------|--|
| 1.   | <b>92782</b>    | Z6930 Base plate gasket                            |
| 2.   | <b>92783</b>    | Mounting Kit                                       |
| 3.   | <b>92784</b>    | Shank connecting gasket                            |
| 4.   | <b>92893</b>    | Electronic box with solenoid                       |
| 5.   | <b>92786</b>    | Solenoid rebuild kit (Diaphragm, plunger & spring) |
| 6.   | <b>92787</b>    | Filter kit   |
| 7.   | <b>92896</b>    | Mixing valve with filter                           |
| 8.   | <b>92895</b>    | Mixing tee with filters & backchecks               |
| 9.   | <b>92791</b>    | 4" Cast cover plate with gasket                    |
| 10.  | <b>92792</b>    | 8" Cast cover plate with gasket                    |
| 11.  | <b>92790</b>    | Optional plug in power converter                   |
| 12.A | <b>40110166</b> | Male Vandal proof Aerator                          |
| 12.B | <b>40110435</b> | Male 1.5 Aerator                                   |



## ZURN Z6930-XL-GEN Sensor Activated Lavatory Faucet with Hydroelectric Generator

ADA compliant, battery-powered, chrome-plated sensor faucet for retrofit and new construction.

### Engineering Specifications:

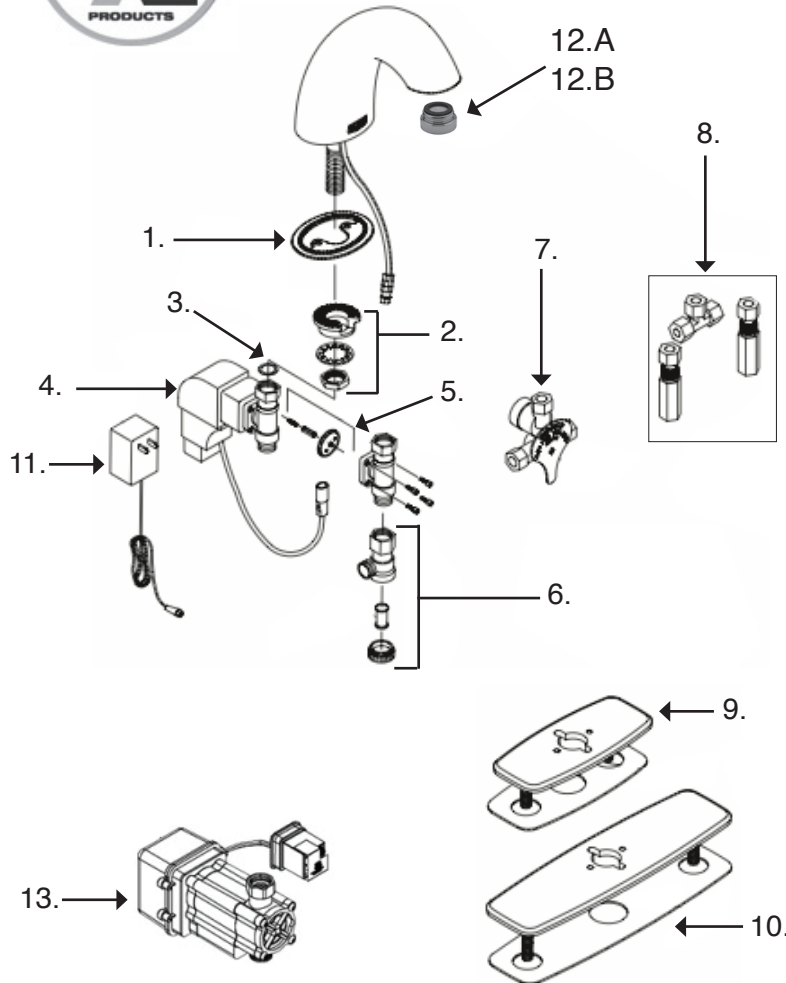
- Occupant detection.
- Thirty second time-out feature
- Infrared convergence-type proximity sensor
- (4) "AA" batteries (30100044)
- Chrome-plated cast brass
- Inlet for a 1/2" riser
- Aerators & Sensors lens are hidden from view



Part No. **92892**



### Parts



- |      |                 |  |
|------|-----------------|--|
| 1.   | <b>92782</b>    | Z6930 Base plate gasket                            |
| 2.   | <b>92783</b>    | Mounting Kit                                       |
| 3.   | <b>92784</b>    | Shank connecting gasket                            |
| 4.   | <b>92893</b>    | Electronic box with solenoid                       |
| 5.   | <b>92786</b>    | Solenoid rebuild kit (Diaphragm, plunger & spring) |
| 6.   | <b>92787</b>    | Filter kit   |
| 7.   | <b>92896</b>    | Mixing valve with filter                           |
| 8.   | <b>92895</b>    | Mixing tee with filters & backchecks               |
| 9.   | <b>92791</b>    | 4" Cast cover plate with gasket                    |
| 10.  | <b>92792</b>    | 8" Cast cover plate with gasket                    |
| 11.  | <b>92790</b>    | Optional plug in power converter                   |
| 12.A | <b>40110166</b> | Male Vandal proof Aerator                          |
| 12.B | <b>40110435</b> | Male 1.5 Aerator                                   |
| 13.  | <b>92793</b>    | Hydrogenerator                                     |

Toll Free: 800-327-3022



Fax Free: 800-327-5689

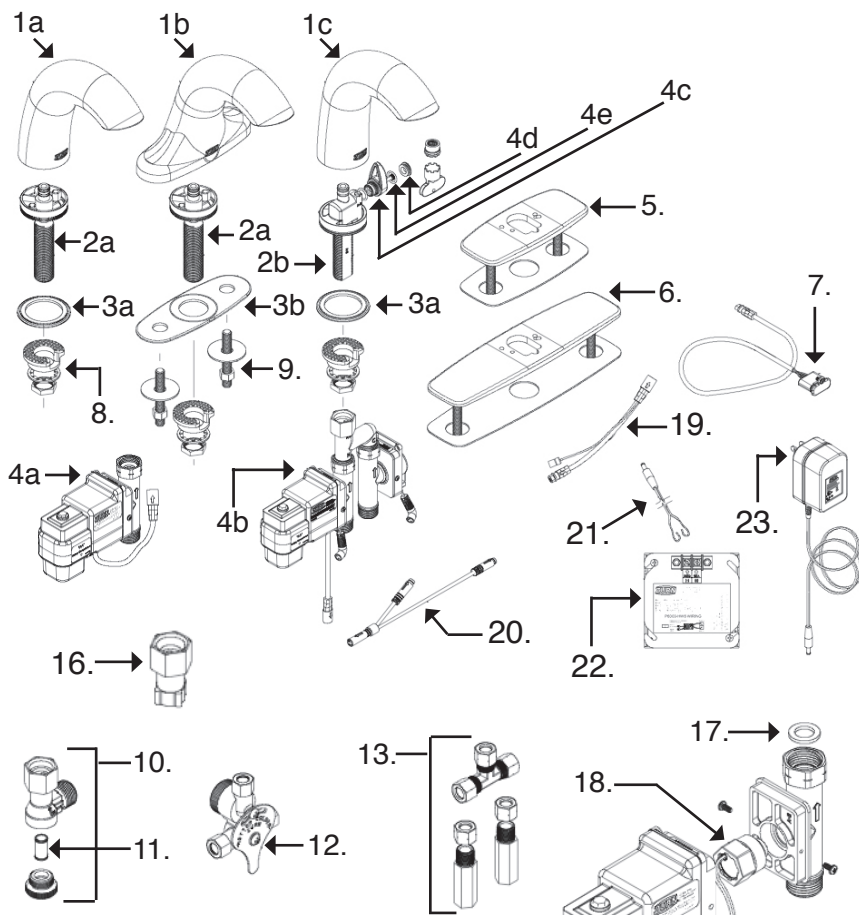
## ZURN Sensor Activated Battery Power Faucets Z6950-XL-IM-S / Z6950-XL-S and Z6955-XL-S


**ZURN®**
Part No. **92977****Z6950-XL-IM-S**Part No. **92978****Z6950-XL-S**Part No. **92979****Z6955-XL-S**

- **ADA compliant**, battery powered, chrome plated sensor faucet for retrofit and new construction.
- **Occupant Detection**  
Infrared convergence-type proximity sensor thirty Second Time out feature.
- **Spout module**  
Chrome plated Brass
- **Also includes**  
In-line filter and (4) "AA" batteries (30100044)

### Parts

- |     |                 |                                   |
|-----|-----------------|-----------------------------------|
| 1a  | <b>92980</b>    | Spout assy. with sensor           |
| 1b  | <b>92981</b>    | Spout assy. with sensor           |
| 1c  | <b>92982</b>    | Spout assy. with sensor           |
| 2a  | <b>92983</b>    | Spout shank base                  |
| 2b  | <b>92984</b>    | Spout shank base (92977)          |
| 3a  | <b>92985</b>    | Spout base gasket                 |
| 3b  | <b>92986</b>    | Spout base gasket (92979)         |
| 4a  | <b>92987</b>    | Electronics box with solenoid     |
| 4b  | <b>92988</b>    | Electronics box (92977)           |
| 4c  | <b>92989</b>    | Mixing handle                     |
| 4d  | <b>92990</b>    | Mixing handle plug / cap          |
| 4e  | <b>92991</b>    | Handle O-ring & handle screw      |
| 5.  | <b>92992</b>    | 4" Cast cover plate / gasket      |
| 6.  | <b>92993</b>    | 8" Cast cover plate / gasket      |
| 7.  | <b>92994</b>    | Sensor assy.                      |
| 8.  | <b>92995</b>    | Mounting kit                      |
| 9.  | <b>92996</b>    | 4" Mounting kit for (92979)       |
| 10. | <b>92997</b>    | Filter kit                        |
| 11. | <b>92998</b>    | Filter screen                     |
| 12. | <b>32990370</b> | Mixing valve with filter          |
| 13. | <b>92789</b>    | Mixing tee w/filter & back checks |
| 16. | <b>93031</b>    | Composite mixing valve adaptor    |
| 17. | <b>93032</b>    | Shank connection gasket           |
| 18. | <b>93033</b>    | Solenoid rebuild kit              |
| 19. | <b>93034</b>    | Sensor inline connector           |
| 20. | <b>93035</b>    | IM Solenoid Y connector           |
| 21. | <b>93036</b>    | CWB pigtail                       |
| 22. | <b>93037</b>    | HW6 power supply                  |
| 23. | <b>93038</b>    | Power plug in converter           |



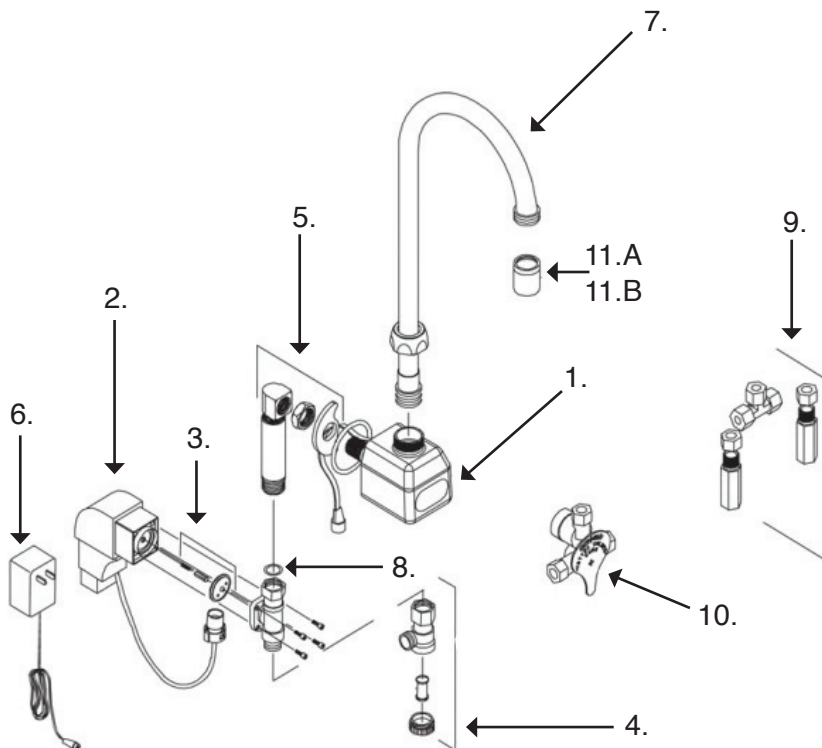


## ZURN Z6922 Sensor Activated Back Mount Lavatory Gooseneck Battery Powered Faucet

- **ADA compliant**, Chrome plated sensor lavatory faucet for retrofit and new construction.
- **Flow Rate**  
1.5 gpm Vandal Resistant Aerator
- **Occupant Detection**  
Infrared convergence-type proximity sensor  
thirty Second Time out feature.
- **Spout module**  
Chrome plated Cast Brass
- **Also includes**  
In-line filter  
Inlet for a 1/2" (13) ball riser  
Single supply hose  
4 "AA" batteries (30100044)

Part No. **92860**

### Parts



- |                      |   |
|----------------------|---|
| 1. <b>92861</b>      | Spout Assy. with sensor                               |
| 2. <b>92862</b>      | Electronic box with solenoid                          |
| 3. <b>92786</b>      | Solenoid rebuild kit<br>(Diaphragm, plunger & spring) |
| 4. <b>92787</b>      | Filter kit  |
| 5. <b>92863</b>      | Mounting Kit  |
| 6. <b>92790</b>      | Optional Plug-in Power<br>converter                   |
| 7. <b>92856</b>      | 5-3/8" Gooseneck Spout                                |
| 8. <b>92784</b>      | Shank connecting gasket                               |
| 9. <b>92789</b>      | Mixing Tee with Filters<br>and Back Checks            |
| 10. <b>32990370</b>  | Mixing valve with filter                              |
| 11.A <b>40110025</b> | Female Vandal proof Aerator                           |
| 11.B <b>40110436</b> | Female 1.5 Aerator                                    |



Toll Free: 800-327-3022



Fax Free: 800-327-5689

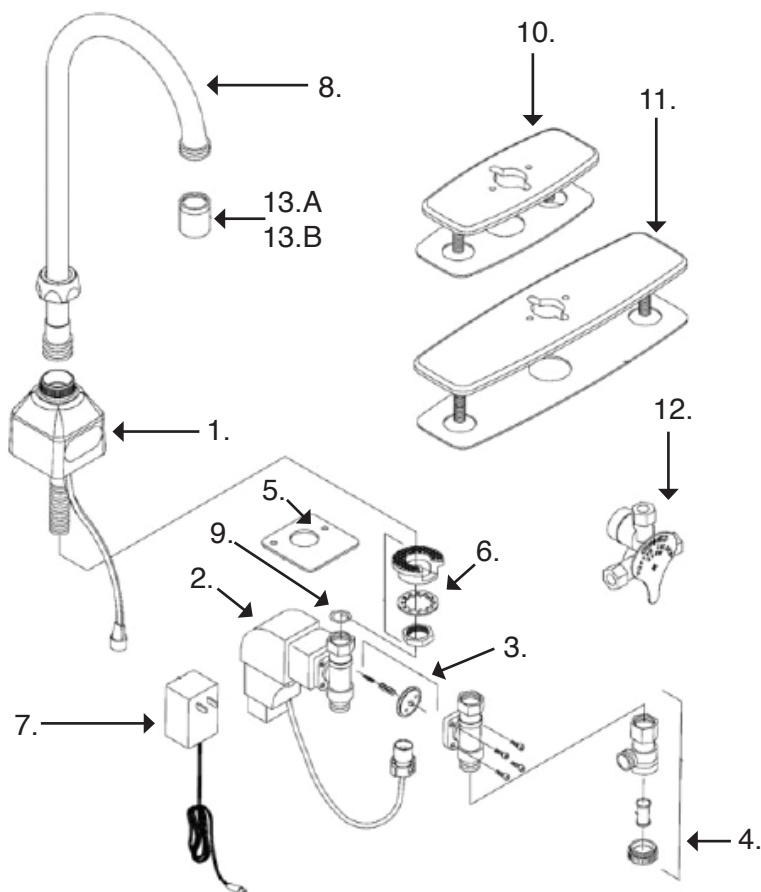
## ZURN Z6920-XL Sensor Activated Deck Mount Lavatory Gooseneck Battery Powered Faucet

- **ADA compliant**, Chrome plated sensor lavatory faucet for retrofit and new construction.
- **Flow Rate**  
1.5 gpm Vandal Resistant Aerator
- **Occupant Detection**  
Infrared convergence-type proximity sensor  
thirty Second Time out feature.
- **Spout module**  
Chrome plated Cast Brass
- **Also includes**  
In-line filter  
Inlet for a 1/2" (13) ball riser  
Single supply hose  
4 "AA" batteries (30100044)

Part No. **92850**

### Parts

- |                      |   |
|----------------------|---|
| 1. <b>92851</b>      | Spout Assy. with sensor                               |
| 2. <b>92852</b>      | Electronic box with solenoid                          |
| 3. <b>92786</b>      | Solenoid rebuild kit<br>(Diaphragm, plunger & spring) |
| 4. <b>92787</b>      | Filter kit  |
| 5. <b>92853</b>      | Base plate gasket                                     |
| 6. <b>92854</b>      | Mounting Kit  |
| 7. <b>92855</b>      | Optional Plug-in Power<br>converter                   |
| 8. <b>92856</b>      | 5-3/8" Gooseneck Spout                                |
| 9. <b>92784</b>      | Shank connecting gasket                               |
| 10. <b>92857</b>     | 4" Cast cover plate with<br>gasket                    |
| 11. <b>92858</b>     | 8" Cast cover plate with<br>gasket                    |
| 12. <b>32990370</b>  | Mixing valve with filter                              |
| 13.A <b>40110025</b> | Female Vandal proof Aerator                           |
| 13.B <b>40110436</b> | Female 1.5 Aerator                                    |



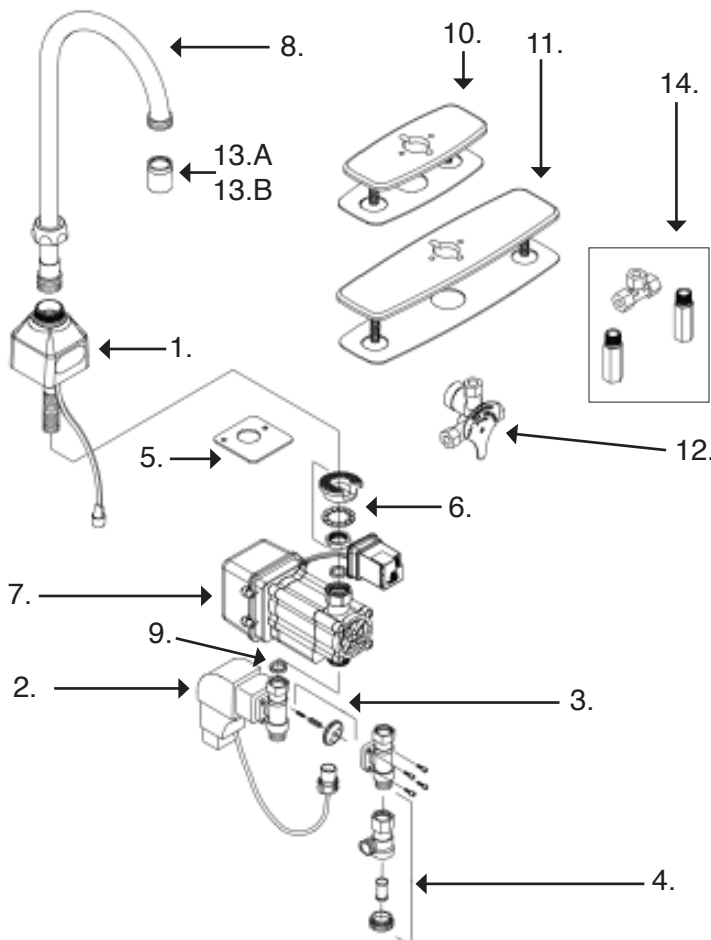


## ZURN Z6920-XL-GEN Sensor Activated Deck Mount Lav. Gooseneck Faucet with Hydroelectric Generator

- **ADA compliant**, Chrome plated sensor lavatory faucet for retrofit and new construction.
- **Flow Rate**  
1.5 gpm Vandal Resistant Aerator
- **Occupant Detection**  
Infrared convergence-type proximity sensor  
thirty Second Time out feature.
- **Spout module**  
Chrome plated Cast Brass
- **Also includes**  
In-line filter  
Inlet for a 1/2" (13) ball riser  
Single supply hose  
(4) "AA" batteries (30100044)

Part No. **92859**

### Parts



- |                      |   |
|----------------------|---|
| 1. <b>92851</b>      | Spout Assy. with sensor                               |
| 2. <b>92852</b>      | Electronic box with solenoid                          |
| 3. <b>92786</b>      | Solenoid rebuild kit<br>(Diaphragm, plunger & spring) |
| 4. <b>92787</b>      | Filter kit  |
| 5. <b>92853</b>      | Base plate gasket                                     |
| 6. <b>92854</b>      | Mounting Kit  |
| 7. <b>92793</b>      | Hydrogenerator  |
| 8. <b>92856</b>      | 5-3/8" Gooseneck Spout                                |
| 9. <b>92784</b>      | Shank connecting gasket                               |
| 10. <b>92857</b>     | 4" Cast cover plate with gasket                       |
| 11. <b>92858</b>     | 8" Cast cover plate with gasket                       |
| 12. <b>32990370</b>  | Mixing valve with filter                              |
| 13.A <b>40110025</b> | Female Vandal proof Aerator                           |
| 13.B <b>40110436</b> | Female 1.5 Aerator                                    |
| 14. <b>92789</b>     | Mixing Tee w/ Filters and Back Checks                 |

Toll Free: 800-327-3022



Fax Free: 800-327-5689

## ZURN ZERK-CP E-Z Flush Battery Powered Sensor Activated Side Mount Retro Flushometer

**ENGINEERING SPECIFICATION:** Zurn ZERK-CP E-Z Flush AquaSense Retro Kit- The AquaSense "A" E-Z Flush unit is designed to provide automatic flushing for urinal and/or closet flush valves. The unit features an adjustable automatic infrared sensor, user-in-view L.E.D., low battery indicator light, switchable 24 hour auto-flush, 10 degree angled sensor, courtesy flush button, and high impact-resistant chrome plated plastic cover with replaceable tempered glass lens. The unit comes complete with 4 "c" size batteries, wrench for installation, and an allen key for the battery compartment.

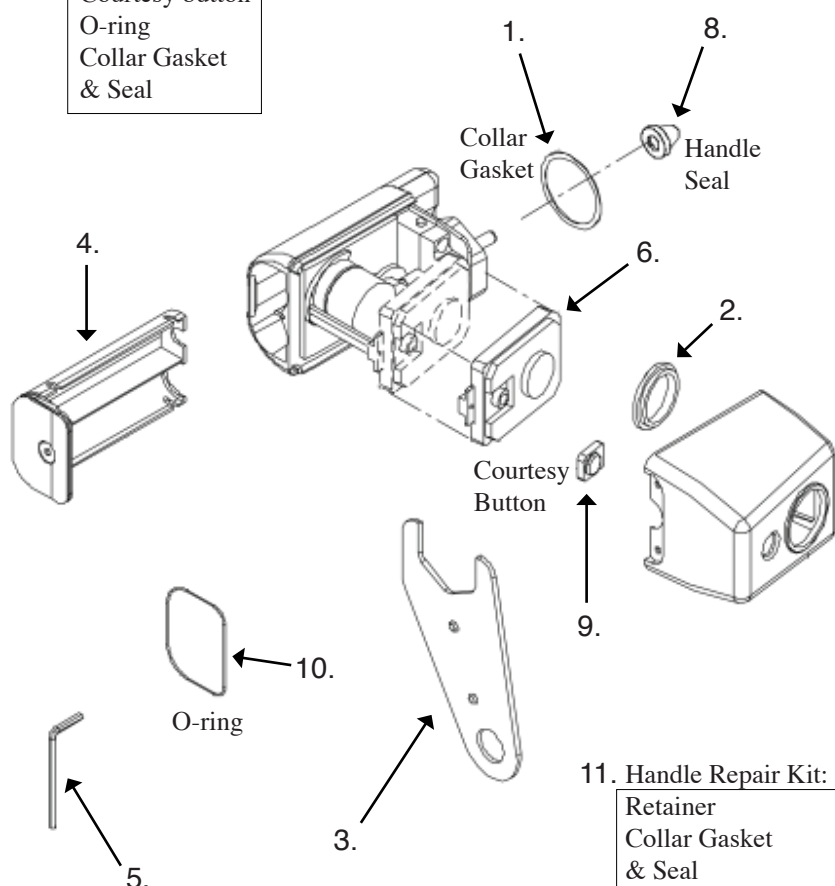
(4) "C" batteries 30100057

**ZURN**®
Part No. **40265105**

### Parts

#### 7. Repair Kit:

Courtesy button  
O-ring  
Collar Gasket  
& Seal



1. **40261139** Collar Gasket
2. **92868** Replacement Lens
3. **92869** Handle Nut Wrench
4. **92870** Battery Drawer
5. **92871** Allen Wrench
6. **92872** Sensor Module
7. **92873** Repair Kit Includes:  
Courtesy button cap,  
O-ring, Collar Gasket & Seal  
#9, #10, #1, #8
8. **40262297** Handle Seal
11. **92874** Handle Repair Kit Includes:  
Retainer, Collar gasket & Seal  
#1, #8

11. Handle Repair Kit:  
Retainer  
Collar Gasket  
& Seal

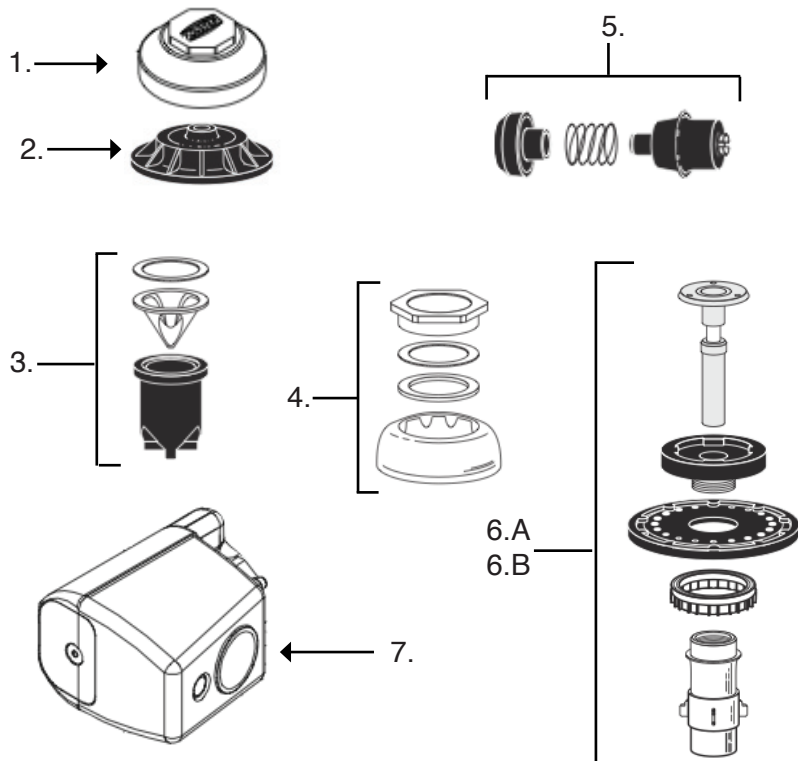


## ZURN ZER6000-CPM Exposed Battery Powered Sensor Activated Side Mount Closet Flushometer

**AquaSense Exposed Closet Flush Valve** - Exposed quiet diaphragm-type, chrome plated flushometer valve with a polished exterior. Complete with chloramine resistant, dual seal diaphragm with a clog resistant by-pass. The valve incorporates a 6VDC motor actuator, a battery powered automatic sensor, high impact resistant polycarbonate housing and chrome plated metal cover with manual override push button and 10 degree angled sensor, high back pressure vacuum breaker, one piece hex coupling nut, adjustable tailpiece, spud coupling and flange for top spud connection. Control stop has internal siphon-guard protection. Internal seals are made of chloramine resistant materials.

(4) "C" batteries 30100057

### AquaVantage



Part No. **92865**



### Parts

1. **92991018** Chrome plated cover
2. **40221170** Inside Cover
3. **40291040** Vacuum Breaker Kit
4. **40266146** 1-1/2" Closet Spud Coupling
5. **40291210** 1" Control Stop Repair kit
- 6.A **92772** 1.6 Closet Diaphragm Inside Low Consumption Repair Kit
- 6.B **92770** 3.5 Closet Diaphragm Repair Kit
7. **40265105** Battery Powered Side Mount Operator for AquaSense exposed flushometer

Toll Free: 800-327-3022



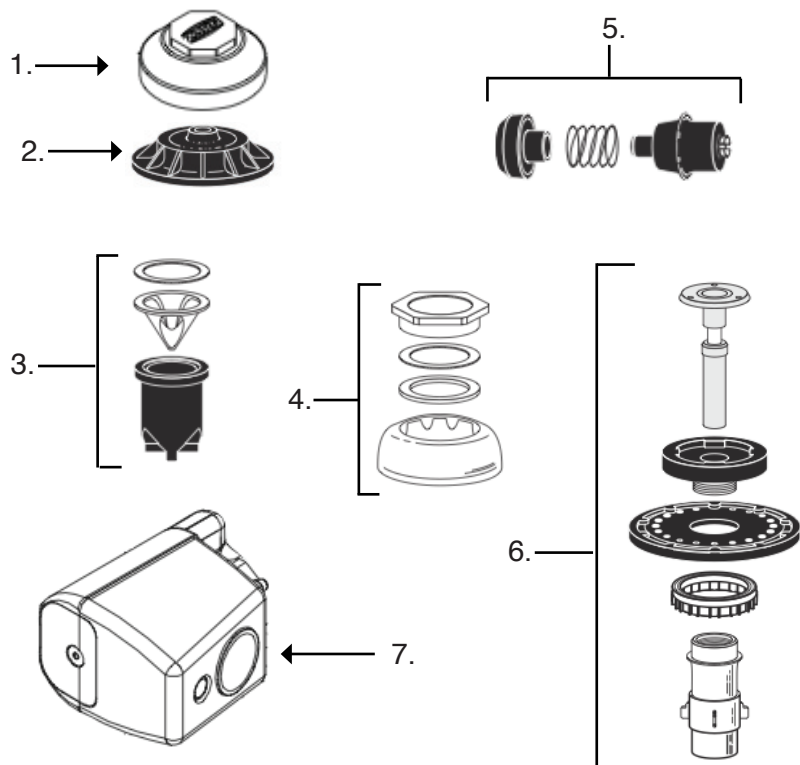
Fax Free: 800-327-5689

## ZURN ZER6003-CPM Exposed Battery Powered Sensor Activated Side Mount Urinal Flushometer

**AquaSense Exposed Urinal Flush Valve** - Exposed quiet diaphragm-type, chrome plated flushometer valve with a polished exterior. Complete with chloramine resistant, dual seal diaphragm with a clog resistant by-pass. The valve incorporates a 6VDC motor actuator, a battery powered automatic sensor, high impact resistant polycarbonate housing and chrome plated metal cover with manual override push button and 10 degree angled sensor, high back pressure vacuum breaker, one piece hex coupling nut, adjustable tailpiece, spud coupling and flange for top spud connection. Control stop has internal siphon-guard protection. Internal seals are made of chloramine resistant materials.

(4) "C" batteries 30100057

### AquaVantage

Part No. **92867**

#### Parts

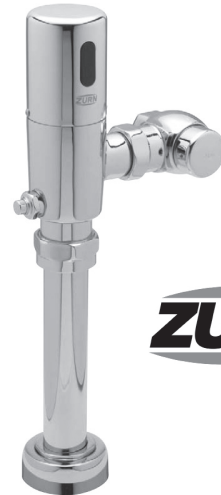
1. **92991018** Chrome plated cover
2. **40221170** Inside Cover
3. **40291040** Vacuum Breaker Kit
4. **40266125** 3/4" Urinal Spud Coupling
5. **40291210** 3/4" Control Stop Repair kit
6. **92771** 1.5 Urinal Diaphragm Repair Kit
7. **40265105** Battery Powered Side Mount Operator for AquaSense exposed flushometer





## ZURN ZTR6200-WS1 Sensor Operated Battery Powered 1.6 gpf or 1.28 gpf Closet Flushvalve

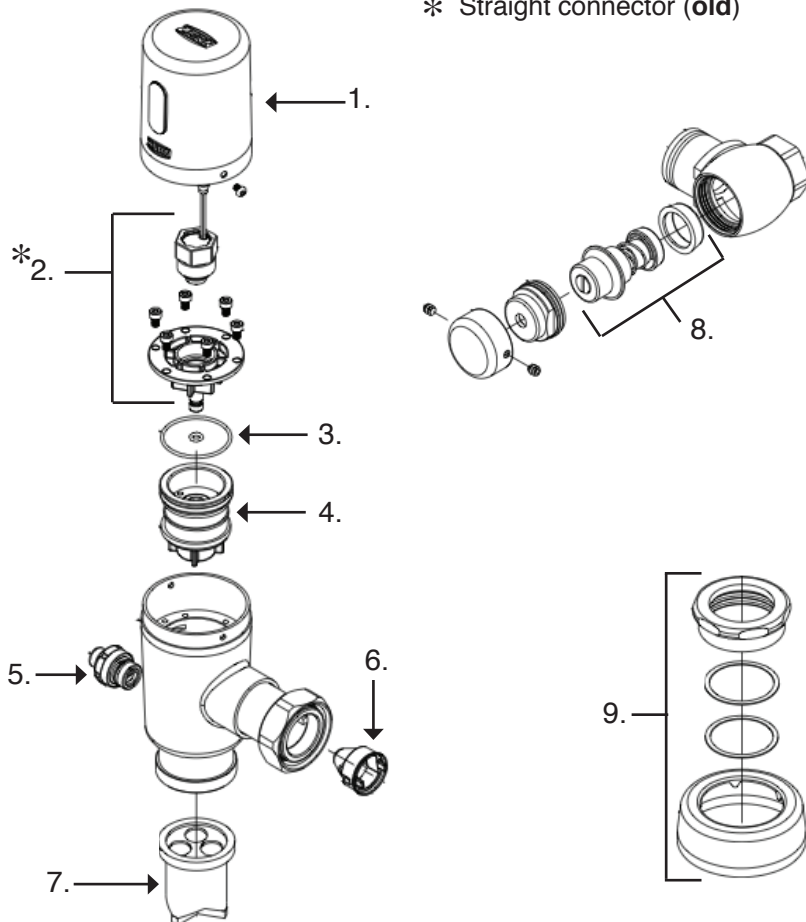
- **Filtered Piston Kit,**  
Chloramine resistant  
Proprietary DR resistant low lead brass alloy
- **Actuator**  
Sensor powered by 4 "AA" batteries, 3 year battery life on 48,000 activations per year (30100044)
- **Control Stop**  
Internal siphon-guard protection, vandal resistant stop cap, sweat solder kit, cast wall flange with screw.
- **Vacuum Breaker**  
High back pressure, one piece hex coupling nut

Part No. **92875**Part No. **92885****1.6 gpf.****1.28 gpf.****ZURN®**

### Parts

- |                           |  |
|---------------------------|--|
| 1. <b><u>92876</u></b>    | Valve Cap / Sensor Assy.<br>1.6 Closet   |
| 1. <b><u>92839</u></b>    | Valve Cap / Sensor Assy.<br>1.28 Closet  |
| 2. <b><u>92877</u></b>    | Solenoid Kit                             |
| 3. <b><u>92878</u></b>    | Flange O-ring                            |
| 4. <b><u>92879</u></b>    | Piston Kit                               |
| 5. <b><u>92880</u></b>    | Manual Override Button                   |
| 6. <b><u>92881</u></b>    | Filter                                   |
| 7. <b><u>40291040</u></b> | Vacuum Breaker                           |
| 8. <b><u>40291210</u></b> | Control Stop Repair Kit<br>for 1" & 3/4" |
| 9. <b><u>40266146</u></b> | Flush Connection and<br>Spud Couplings   |

- \* Elbow connector (**current**)
- \* Straight connector (**old**)



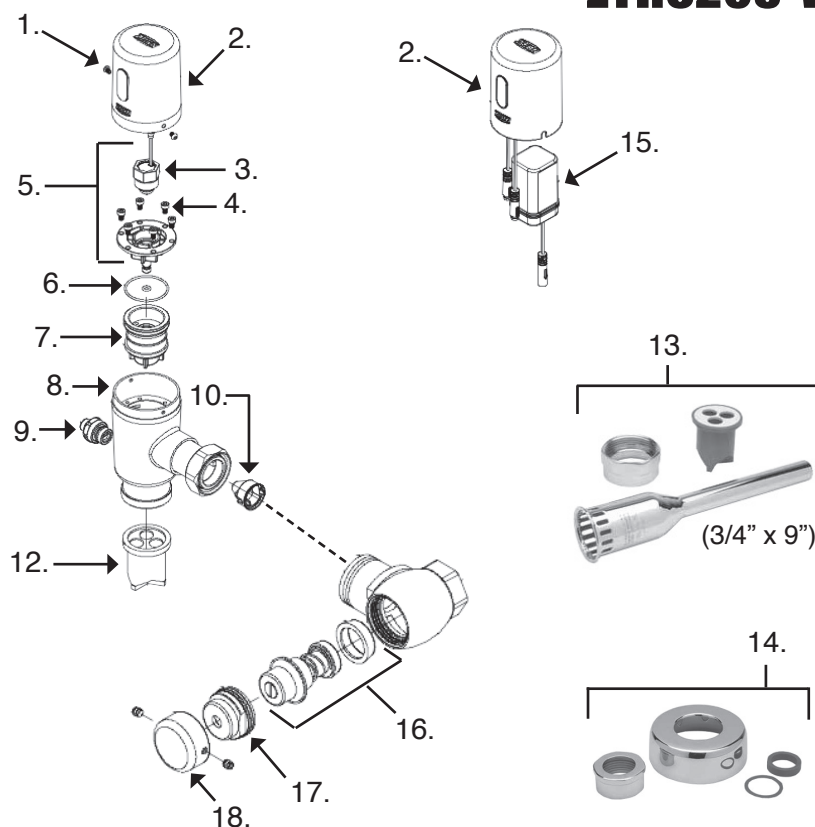
Toll Free: 800-327-3022



Fax Free: 800-327-5689

## ZURN Sensor Operated Urinal Flush Valve ZTR6203-WS1

Part No. 92886



(4) "AA" batteries 30100044

### Parts

- |    |              |                                    |
|----|--------------|------------------------------------|
| 1. | <b>93311</b> | Cover screw                        |
| 2. | <b>93302</b> | Valve cap/sensor assy. (1.1 gpf)   |
| 2. | <b>92839</b> | Valve cap/sensor assy. (1.28 gpf)  |
| 2. | <b>92876</b> | Valve cap/sensor assy. (1.6 gpf)   |
| 2. | <b>93303</b> | Valve cap/sensor assy. (1.0 gpf)   |
| 2. | <b>93304</b> | Valve cap/sensor assy. (1.5 gpf)   |
| 2. | <b>93305</b> | Valve cap/sensor assy. (1.25 gpf)  |
| 2. | <b>93306</b> | Valve cap/sensor assy. (1.125 gpf) |
| 3. | <b>92877</b> | Solenoid                           |
| 4. | <b>93309</b> | Piston cover screws                |
| 5. | <b>93307</b> | Solenoid kit                       |
| 6. | <b>92878</b> | Flange O-rings                     |
| 7. | <b>92879</b> | Piston kit (1.1/1.28/1.6 gpf)      |
| 7. | <b>93307</b> | Piston kit (0.5/1.0 gpf)           |

### Parts

- |     |                 |                                     |
|-----|-----------------|-------------------------------------|
| 7.  | <b>93308</b>    | Piston kit (0.125/0.25 gpf)         |
| 8.  | <b>93301</b>    | Valve housing                       |
| 9.  | <b>92880</b>    | Manual override button assy.        |
| 10. | <b>92876</b>    | Filter (1.28/1.6 gpf)               |
| 10. | <b>93303</b>    | Filter (1.0/0.5 gpf)                |
| 12. | <b>40291040</b> | Vacuum breaker kit                  |
| 13. | <b>40263005</b> | Tailpiece with vacuum breaker       |
| 14. | <b>40266125</b> | Urinal coupling 3/4" kit            |
| 15. | <b>93312</b>    | Battery housing                     |
| 16. | <b>40291210</b> | Stop repair kit 1"                  |
| 17. | <b>40291018</b> | Stop cap bonnet                     |
| 18. | <b>40291019</b> | Vandal-resistant control stop cover |



## T&S Brass EC-3100 Check Point Electronic, Deck Mount, Gooseneck, AC/DC Control Module Faucet

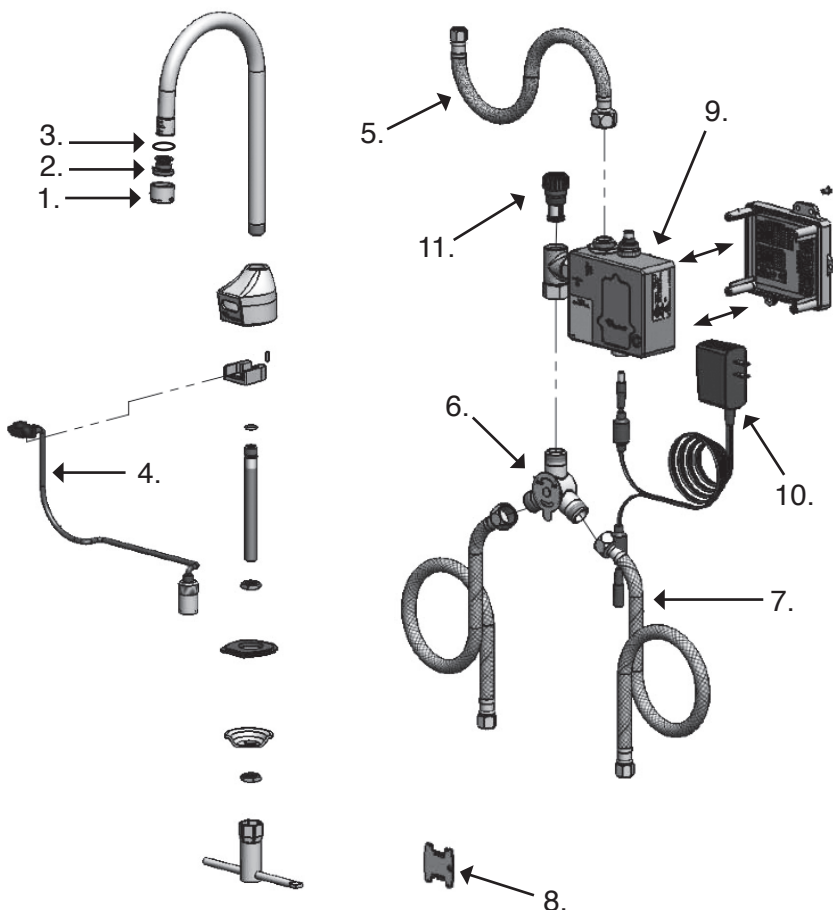
EC-3100 Check Point chrome plated brass Electronic Faucet. Deck Mount Rigid Gooseneck with Vandal resistant aerator, AC/DC control module with internal flow control setting switches, temperature control mixing valve with integral check valves, 18" Hot & Cold supply stop flexible connector hoses. 2.2 Flow rate. ADA Compliant.  
(4) "AA" batteries (30100044)

Part No. **93010**



### Parts

1. **40110025** Vandal Proof Aerator 2.2gpm
2. **40110120** 3/8" to Aerator Adapter
3. **40950024** Aerator Adapter O-ring
4. **93011** Angled Sensor with Cable
5. **93012** Inlet hose 1/2" NPSM-F X 1/4" NPSM-F
6. **93013** Mechanical Mixing Valve
7. **93014** Supply Hose, 9/16-24 Fem. X 1/2" NPSM
8. **12110** Vandal Resistant Key
9. **93020** CheckPoint Module (Blue)
10. **93015** A/C Transformer
11. **93016** Replacement Filter



Toll Free: 800-327-3022



Fax Free: 800-327-5689

## T&S Brass EC-3103 Check Point Electronic, 4" Deck Mount Faucet with AC/DC Control Module

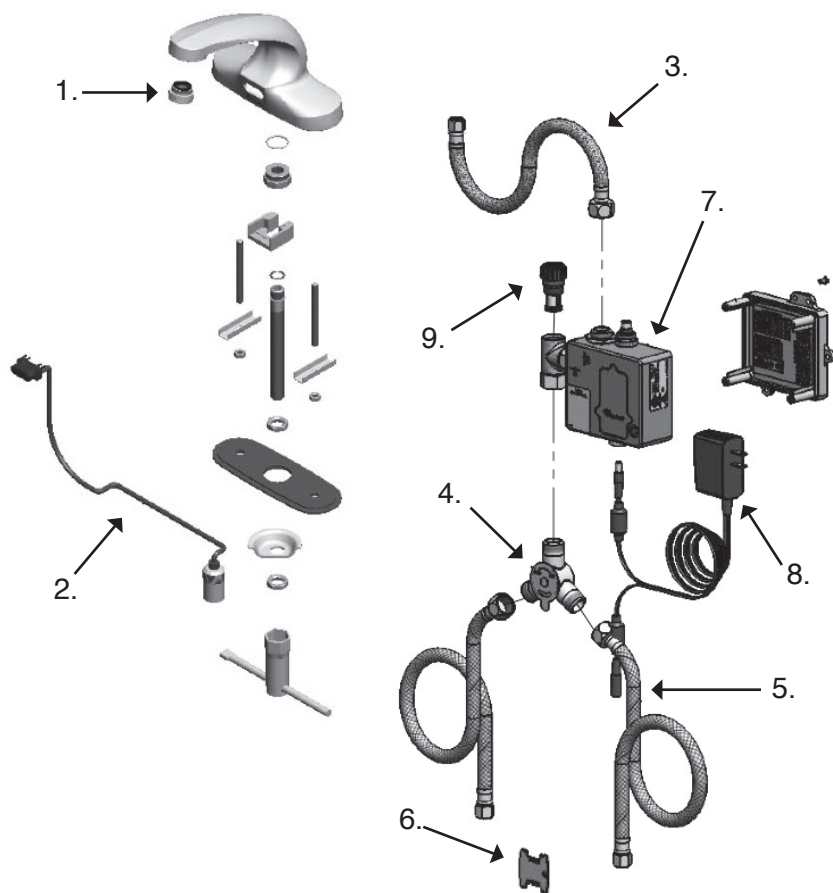
EC-3103 Check Point chrome plated brass Electronic Faucet. 4" Deck Mount Spout with Vandal resistant aerator, AC/DC control module with internal flow control setting switches, temperature control mixing valve with integral check valves, 18" Hot & Cold supply stop flexible connector hoses. 2.2 Flow rate. ADA Compliant.

(4) "AA" batteries (30100044)

Part No. **93021**

### Parts

1. **40110019** Vandal Proof Aerator 2.2gpm
2. **93011** Angled Sensor with Cable
3. **93012** Inlet hose 1/2" NPSM-F X 1/4" NPSM-F
4. **93013** Mechanical Mixing Valve
5. **93014** Supply Hose, 9/16-24 Fem. X 1/2" NPSM
6. **12110** Vandal Resistant Key
7. **93020** CheckPoint Module (Blue)
8. **93015** A/C Transformer
9. **93016** Replacement Filter





## T&S Brass EC-3102 Check Point Electronic, Single Hole Deck Mount AC/DC Control Module Faucet

EC-3102 Check Point chrome plated brass Electronic Faucet. Deck Mount Single Hole Spout with Vandal resistant aerator, AC/DC control module with internal flow control setting switches, temperature control mixing valve with integral check valves, 18" Hot & Cold supply stop flexible connector hoses. 2.2 Flow rate. ADA Compliant.

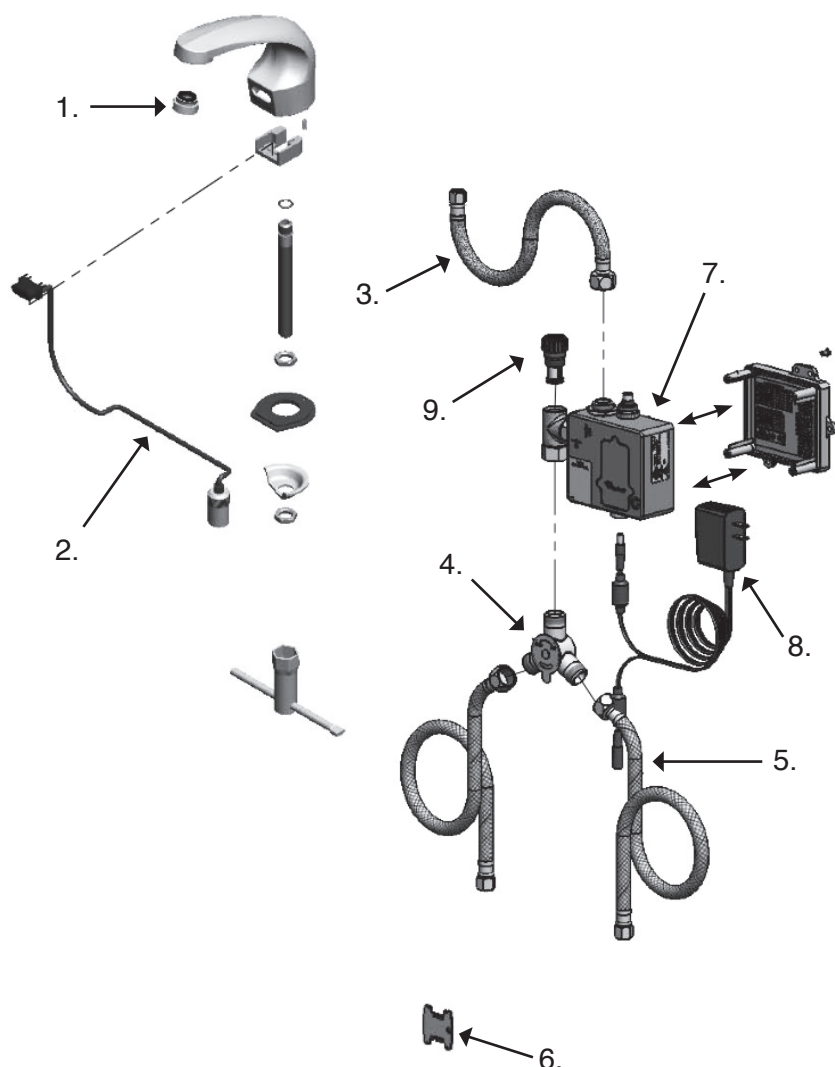
(4) "AA" batteries (30100044)

Part No. **93019**



### Parts

1. **40110019** Vandal Proof Aerator 2.2gpm
2. **93011** Angled Sensor with Cable
3. **93012** Inlet hose 1/2" NPSM-F X 1/4" NPSM-F
4. **93013** Mechanical Mixing Valve
5. **93014** Supply Hose, 9/16-24 Fem. X 1/2" NPSM
6. **12110** Vandal Resistant Key
7. **93020** CheckPoint Module (Blue)
8. **93015** A/C Transformer
9. **93016** Replacement Filter





Toll Free: 800-327-3022



Fax Free: 800-327-5689

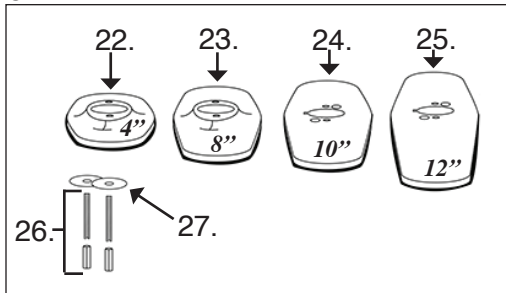
## T/C Milano Single Hole Mount AC/DC Sensor Activated Automatic Faucet

Part No. **93100**

- **Touch-free** activation eliminates cross-contamination to help reduce the spread of germs.
- **Surround Sensor** technology creates a 3" omni-directional sensing one guaranteeing activation every time.
- Long battery life-400,000 cycles or 3 years (4) D batteries included
- Optional AC power adapter available.
- **Height: 3-3/4"**
- **Length: 6-1/2"**
- **Width: 2.1 inch**

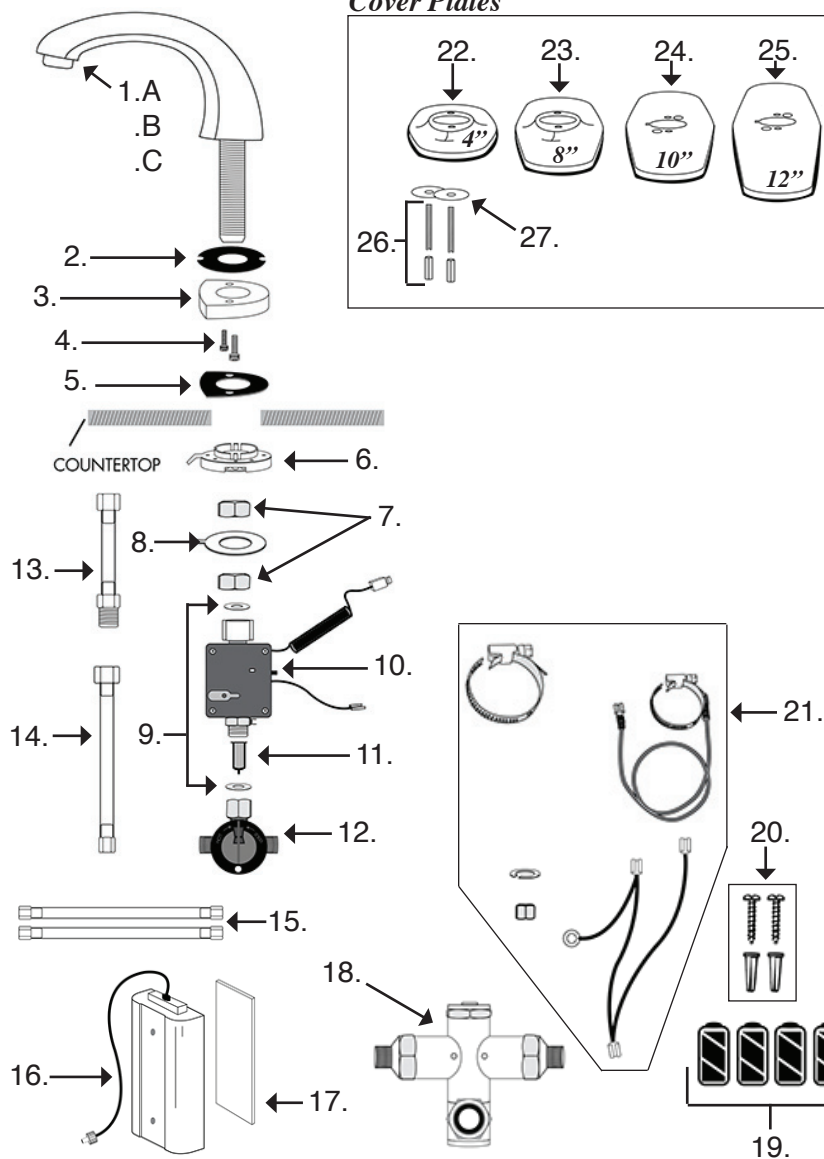


### Cover Plates



### Parts

- 1.A **40110144** Male Aerator 2.2gpm 15/16
- 1.B **40110415** Male Aerator 1.5gpm 15/16
- 1.C **40110166** Vandal Proof Aerator 2.2gpm
2. **93101** Rubber gasket for spout base
3. **93102** Top plastic insulator
4. **93103** M4 x 25mm Screws (x2)
5. **93104** Rubber spacer gasket
6. **93105** Tab grounding spacer
7. **93106** Brass mounting nut (x2)
8. **93107** Sensor wire conn. washer
9. **93108** Rubber washers (x2)
10. **93109** Valve control module
11. **93110** Dirt filter
12. **93111** Mixing valve with filter
13. **93112** 6" Extension hose 1/2" x 1/2"
14. **93113** Main supply line hose
15. **93114** 12" Supply hoses 3/8" x 3/8"
16. **93115** Battery compartment
17. **93116** Double sided foam tape
18. **93117** Thermostatic mixing valve
19. **30100058** D cell Alkaline batteries (x4)
20. **93119** Battery compartment screws
21. **93120** Isolation Kit
22. **93121** Cover Plate 4"
23. **93122** Cover Plate 8"
24. **93123** Cover Plate 10"
25. **93124** Cover Plate 12"
26. **93125** Cover plate studs & nuts
27. **93126** Cover plate washers





## T/C OneShot Touch-Free Counter Mounted Foam Soap System

- **Touch-free** activation eliminates cross-contamination to help reduce the spread of germs.
  - **Surround Sensor** technology creates a 3" omni-directional sensing zone guaranteeing activation every time.
  - Long battery life-90,000 cycles or 2 years (batteries not included)
  - Optional AC power adapter available.
  - **Height: 4"**
  - **Width: 5.5"**
  - **Mounts Through a 15/16" to 1-1/4" Hole**
- (4) "D" cell batteries (30100028)

Part No. **93129**

**Foam Soap**  
1600 ml. (2,000 Doses)

FOAM

1 Each



Part No. **93127**



## T/C OneShot Touch-Free Counter Mounted Liquid Soap System

- **Touch-free** activation eliminates cross-contamination to help reduce the spread of germs.
  - **Surround Sensor** technology creates a 3" omni-directional sensing zone guaranteeing activation every time.
  - Long battery life-90,000 cycles or 2 years (batteries not included)
  - Optional AC power adapter available.
  - **Height: 4"**
  - **Width: 5.5"**
  - **Mounts Through a 15/16" to 1-1/4" Hole**
- (4) "D" cell batteries (30100028)

Part No. **93130**

**Liquid Soap**  
1600 ml. (2,000 Doses)

Liquid

1 Each



Part No. **93128**



Toll Free: 800-327-3022



Fax Free: 800-327-5689

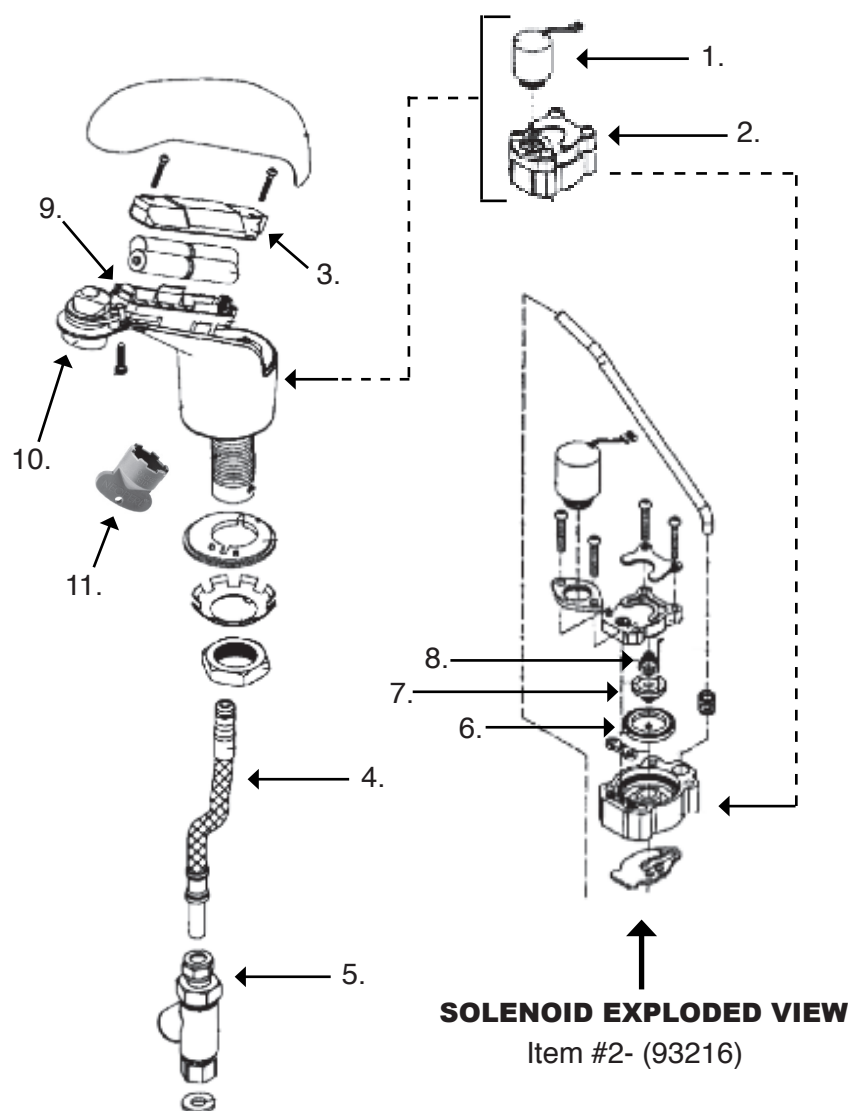
## Hydrotek HB-5000E Non-Mixing Battery Powered Deck Mounted Single Hole Automatic Faucet

- ADA Compliant. Meets all barrier free codes.
- Vandal resistant faucet body with chrome plated, solid metal construction.
- Available in AC powered and Battery powered versions.
- AC power input cable is armored and vandal resistant (AC Powered version)
- Low battery indicator light.
- Built-in, replaceable filter (4) "AA" batteries (30100044)

Part No. **93214****Hydrotek**

### Parts

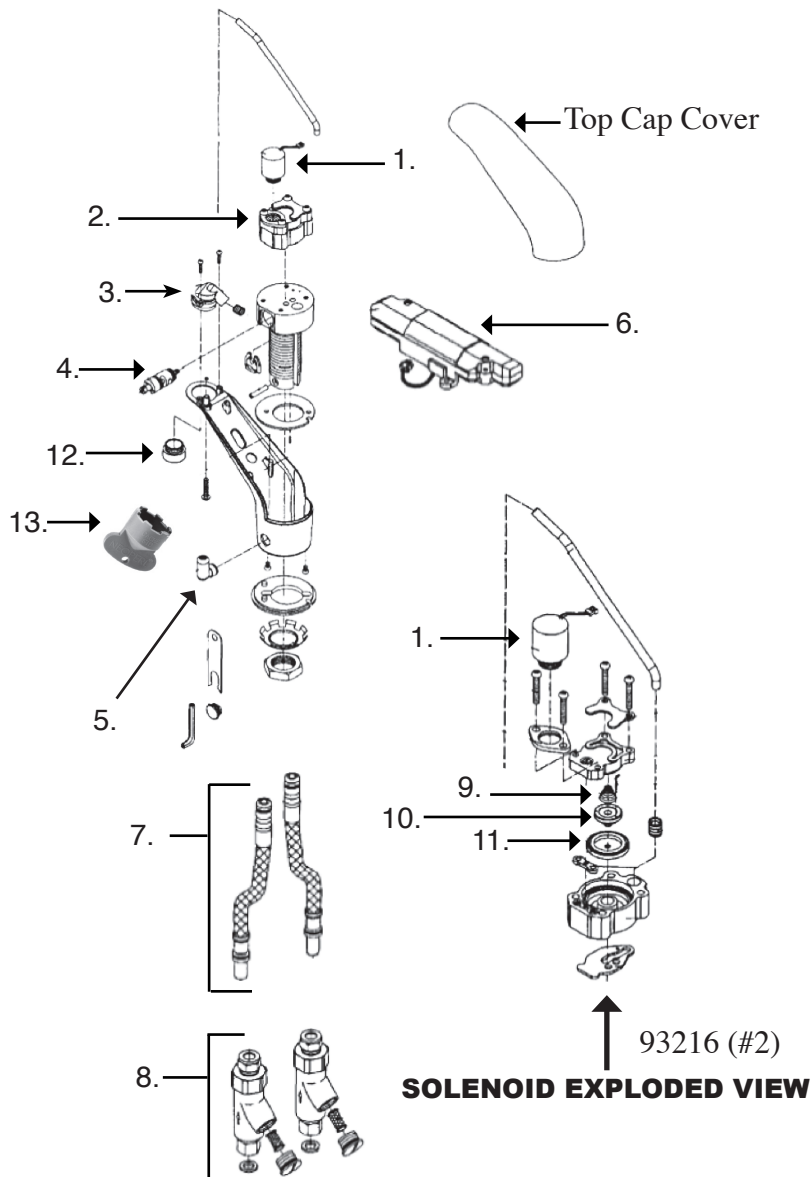
- |                     |                                      |
|---------------------|--------------------------------------|
| 1. <b>93215</b>     | Solenoid Coil                        |
| 2. <b>93216</b>     | Solenoid                             |
| 3. <b>93217</b>     | Control Module                       |
| 4. <b>93218</b>     | Supply Tubes                         |
| 5. <b>93219</b>     | Check Stops                          |
| 6. <b>93220</b>     | Control Disc Rubber                  |
| 7. <b>93221</b>     | Control Disc                         |
| 8. <b>93222</b>     | Spring                               |
| 9. <b>use 93217</b> | Battery Holder                       |
| 10. <b>40110144</b> | Male Aerator 2.2GPM before 2016      |
| 10. <b>1980</b>     | Cache Male Aerator 2.2GPM after 2016 |
| 11. <b>1898</b>     | Cache Aerator Key (grey)             |





## Hydrotek 5000EM AC or Battery Powered Sensor Operated Faucet

- ADA Compliant. Meets all barrier free codes
- Vandal resistant faucet body with chrome plated, solid metal construction.
- Built-in checks & manual on/off
- Built-in replaceable screen filters  
(4) "AA" batteries (30100044)

Part No. **93240****Hydrotek**

### Parts

- |                            |   |
|----------------------------|---|
| 1. <b><u>93215</u></b>     | Solenoid Coil                           |
| 2. <b><u>93216</u></b>     | Solenoid                                |
| 3. <b><u>93246</u></b>     | Aerator connector                       |
| 4. <b><u>93248</u></b>     | Mixing controller                       |
| 5. <b><u>93247</u></b>     | Temp. adjusting knob                    |
| 6. <b><u>93217</u></b>     | Control Module                          |
| 7. <b><u>93218</u></b>     | Supply Tubes                            |
| 8. <b><u>93219</u></b>     | Check Stops                             |
| 9. <b><u>93222</u></b>     | Spring                                  |
| 10. <b><u>93221</u></b>    | Control Disc                            |
| 11. <b><u>93220</u></b>    | Rubber control disc                     |
| 12. <b><u>40110144</u></b> | Male Aerator 2.2GPM<br>before 2016      |
| 12. <b><u>1980</u></b>     | Cache Male Aerator 2.2GPM<br>after 2016 |
| 13. <b><u>1898</u></b>     | Cache Aerator Key (grey)                |

Toll Free: 800-327-3022



Fax Free: 800-327-5689

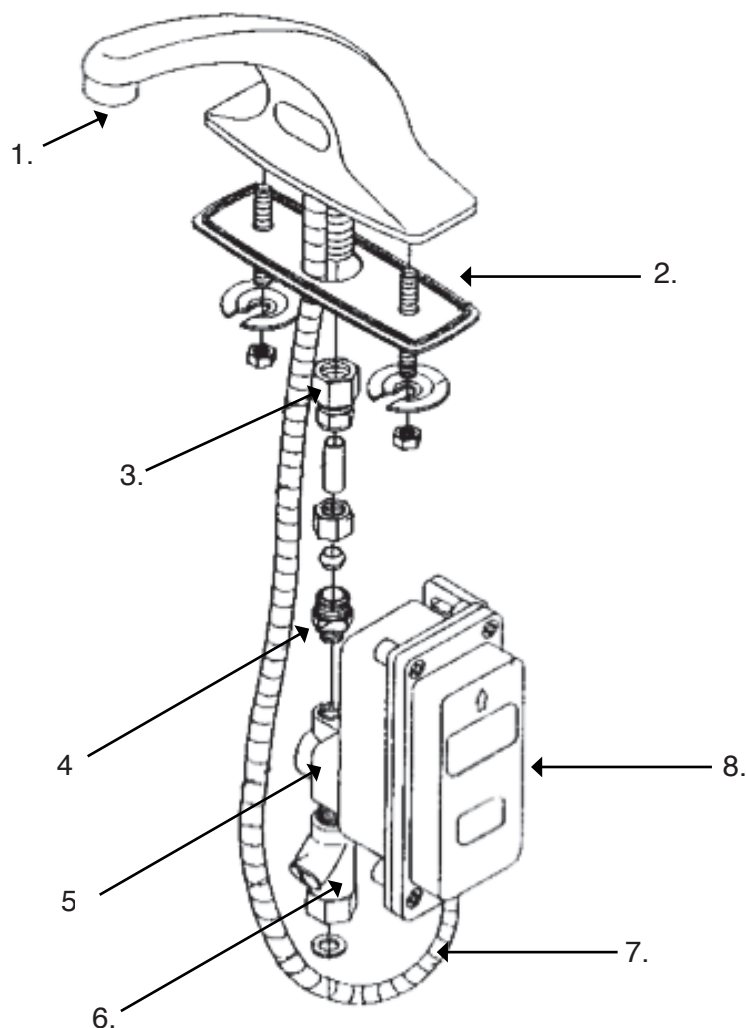
## Hydrotek HB-1000C Non-Mixing Battery Powered 4-inch Center Set Piston Operated Sensor Faucet

- ADA Compliant. Meets all barrier free codes.
- All solid brass construction
- Slow closing, piston-operated solenoid valve provides reliable and smooth operation without water hammer.
- Includes in-line filter with clean-out trap.
- Wall mountable, waterproof control box with armored, vandal resistant control and power cables
- Promotes cleanliness & hygiene
- (4) "AA" batteries (30100044)

Part No. **93224****Hydrotek**

### Parts

- |    |                 |                           |
|----|-----------------|---------------------------|
| 1. | <b>40110144</b> | Male Aerator 2.2 GPM      |
| 2. | <b>93225</b>    | Faucet Body Gasket        |
| 3. | <b>93226</b>    | Compression Adapt.        |
| 4. | <b>93227</b>    | Compression fitting       |
| 5. | <b>93228</b>    | Solenoid Valve            |
| 6. | <b>93229</b>    | In-line filter            |
| 7. | <b>93230</b>    | Sensor eye cable          |
| 8. | <b>93231</b>    | Control Box               |
| 9. | <b>93232</b>    | Solenoid kit for Item # 5 |



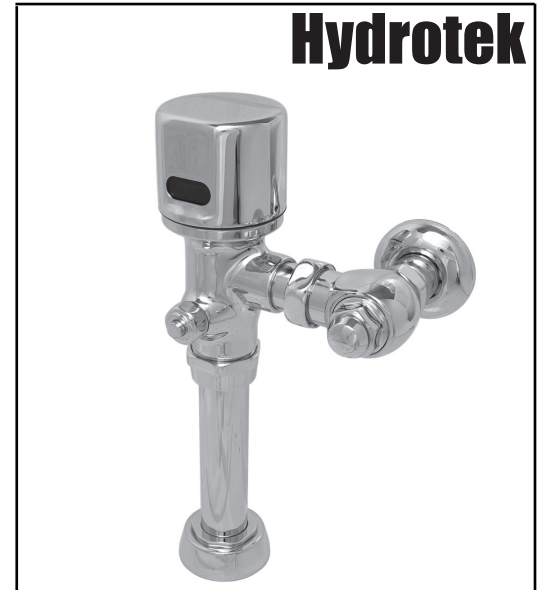




## Hydrotek HB-8000C-A Exposed AC/DC Powered Sensor Activated Piston Closet Flushometer

- **ACCU-SENSE** adjustable sensor eyes.
- Standard brass/chrome plated all metal construction.
- AC/DC powered is field switchable.
- Operating pressures: 10-125 PSI
- Standard self-cleaning filtering system.
- 24 hour sentinel flush
- Uses inexpensive AA batteries / requires (4) - (30100044)
- Battery service life: 400,000 on/off cycles
- No outside power source required
- Superior VSI Silicone Elastomer seals, unaffected by chlorine, chloramines, and ammonia.
- Low battery indicator light
- Self-diagnostic electronics.
- True mechanical override
- Preset/adjustable flow rate and sensor distance.

Part No. 93200

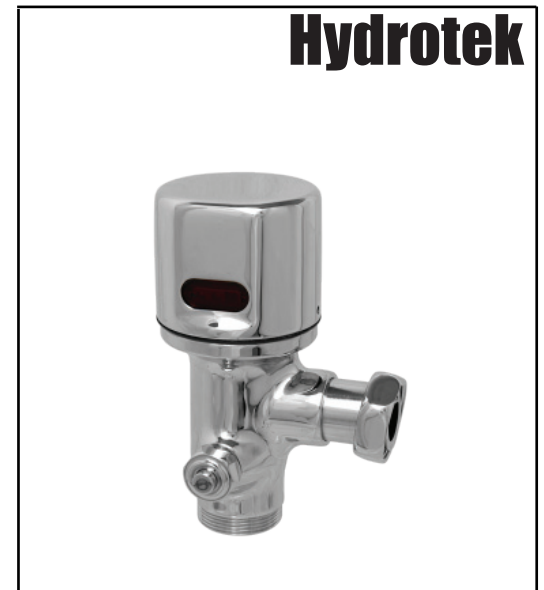


## Hydrotek HB8RFKC Exposed Battery Powered Sensor Activated Retrofit Closet Flushometer

The Hydrotek HB8RFKC is a battery operated, retrofit sensor flush valve that is the most dependable and versatile electronic flushing systems in the industry today. Installation is quick and easy as it utilizes your existing Sloan, Delany, Zurn, or Toto stop valve, vacuum breaker and flush tube.

- **ADA Compliant.** Meets all barrier free codes
- Conserves water and energy
- Easily installed in new or retrofit applications
- Competitively priced for today's commercial market
- Promotes cleanlines & hygiene
- Proven Hydrotek craftsmanship and reliability

Part No. 93201



Toll Free: 800-327-3022



Fax Free: 800-327-5689

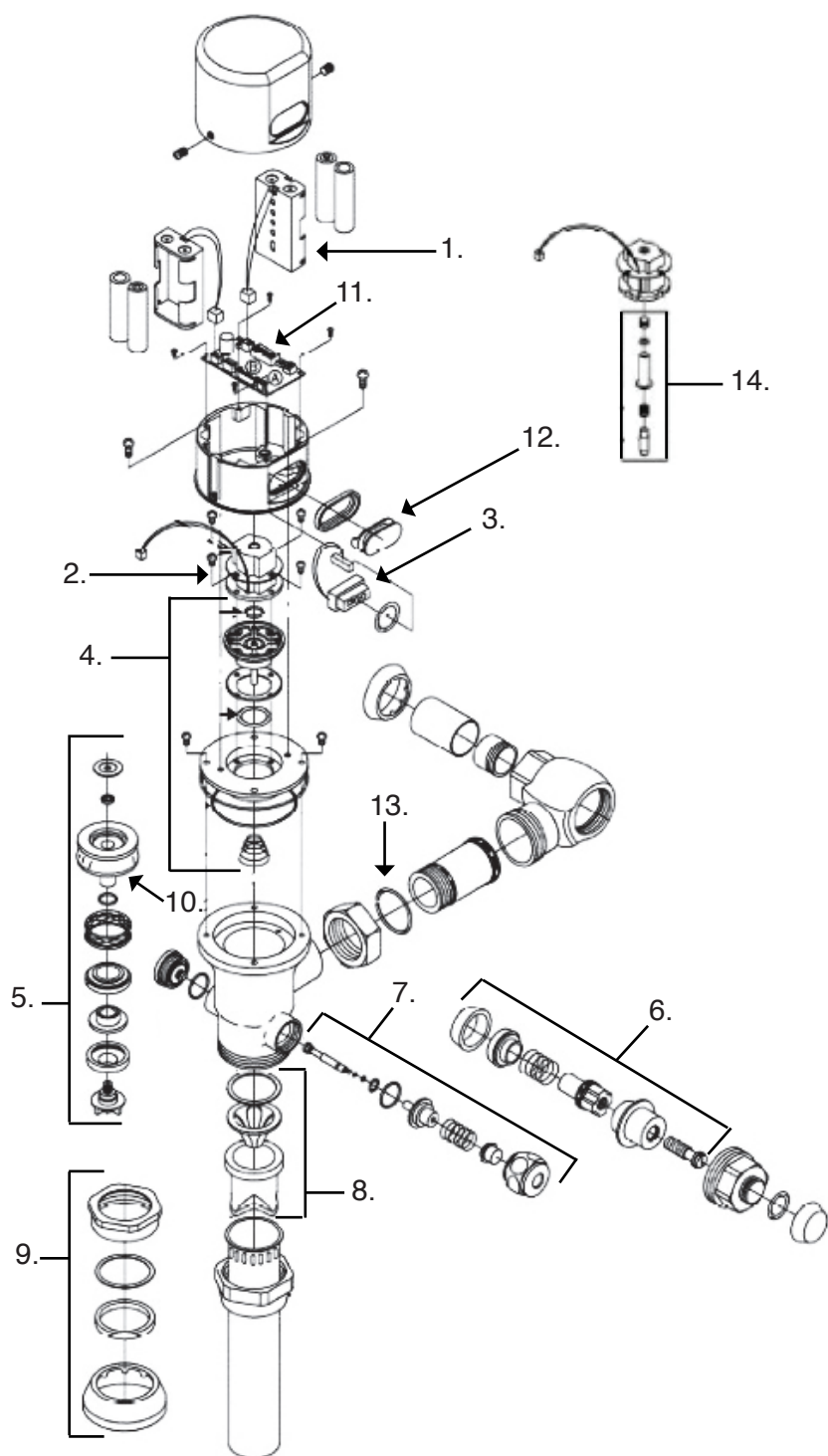
## Hydrotek HB-8000C-A Exposed AC/DC Powered Sensor Activated Piston Closet Flushometer

# Hydrotek

### Parts

- |     |                        |                           |
|-----|------------------------|---------------------------|
| 1.  | <b><u>93202</u></b>    | Battery Holders           |
| 2.  | <b><u>93203</u></b>    | Solenoid Coil Module      |
| 3.  | <b><u>93204</u></b>    | Sensor Eye / Cable        |
| 4.  | <b><u>93205</u></b>    | Solenoid valve Repair Kit |
| 5.  | <b><u>93206</u></b>    | Control Disc Assembly     |
| 6.  | <b><u>9726</u></b>     | Angle Stop Repair Kit     |
| 7.  | <b><u>93207</u></b>    | Manual Button Assembly    |
| 8.  | <b><u>40201005</u></b> | Vacuum Breaker Repair Kit |
| 9.  | <b><u>40266146</u></b> | 1-1/2" Top spud Assembly  |
| 10. | <b><u>93208</u></b>    | Blue Rubber Disc.         |
| 11. | <b><u>93209</u></b>    | 1.6 GPF Control Module    |
| 12. | <b><u>93210</u></b>    | Sensor Cover              |
| 13. | <b><u>40950069</u></b> | O-ring #31                |
| 14. | <b><u>93205</u></b>    | Part of Kit (Item # 4)    |

*Individual Parts Available Upon Request!  
(Special order)*

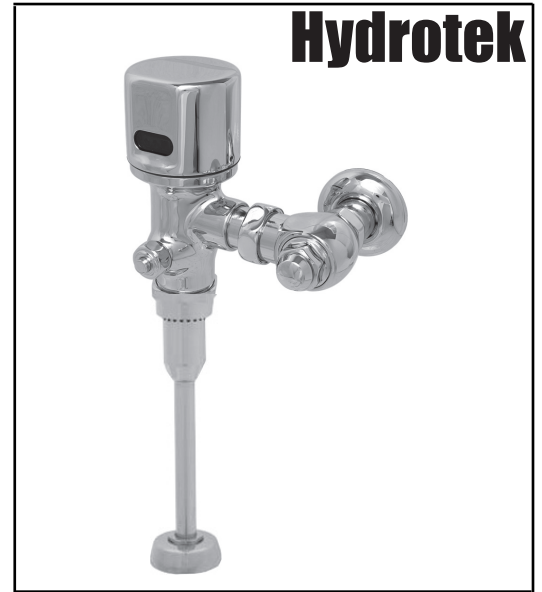




## Hydrotek HB-8000C-B-1 Exposed AC/DC Powered Sensor Activated Piston 1.0 GPF Urinal Flushometer

- **ACCU-SENSE** adjustable sensor eyes.
- Standard brass/chrome plated all metal construction.
- AC/DC powered is field switchable.
- Operating pressures: 10-125 PSI
- Standard self-cleaning filtering system.
- 24 hour sentinel flush
- Uses inexpensive AA batteries / requires (4) - (30100044)
- Battery service life: 400,000 on/off cycles
- No outside power source required
- Superior VSI Silicone Elastomer seals, unaffected by chlorine, chloramines, and ammonia.
- Low battery indicator light
- Self-diagnostic electronics.
- True mechanical override
- Peset/adjustable flow rate and sensor distance.

Part No. **93211**



## Hydrotek HB8RFKC-U Exposed Battery Powered Sensor Activated Retrofit Urinal Flushometer

The Hydrotek HB8RFKC is a battery operated, retrofit sensor flush valve that is the most dependable and versatile electronic flushing systems in the industry today. Installation is quick and easy as it utilizes your existing Sloan, Delany, Zurn, or Toto stop valve, vacuum breaker and flush tube.

- **ADA Compliant.** Meets all barrier free codes
- Conserves water and energy
- Easily installed in new or retrofit applications
- Competitively priced for today's commercial market
- Promotes cleanlines & hygiene
- Proven Hydrotek craftsmanship and reliability

Part No. **93212**



Toll Free: 800-327-3022



Fax Free: 800-327-5689

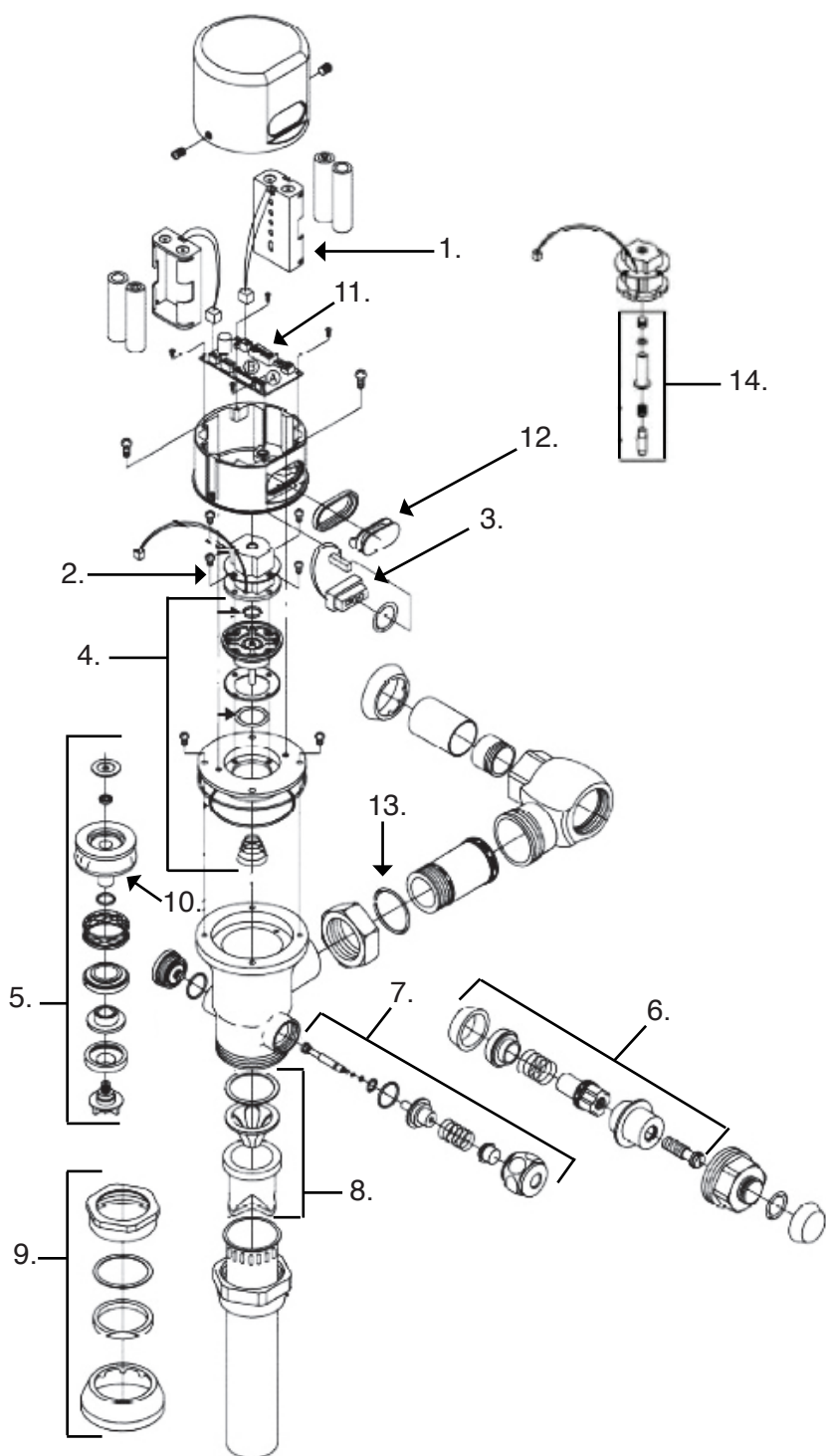
## Hydrotek HB-8000C-B-1 Exposed AC/DC Powered Sensor Activated Piston 1.0 GPF Urinal Flushometer

# Hydrotek

### Parts

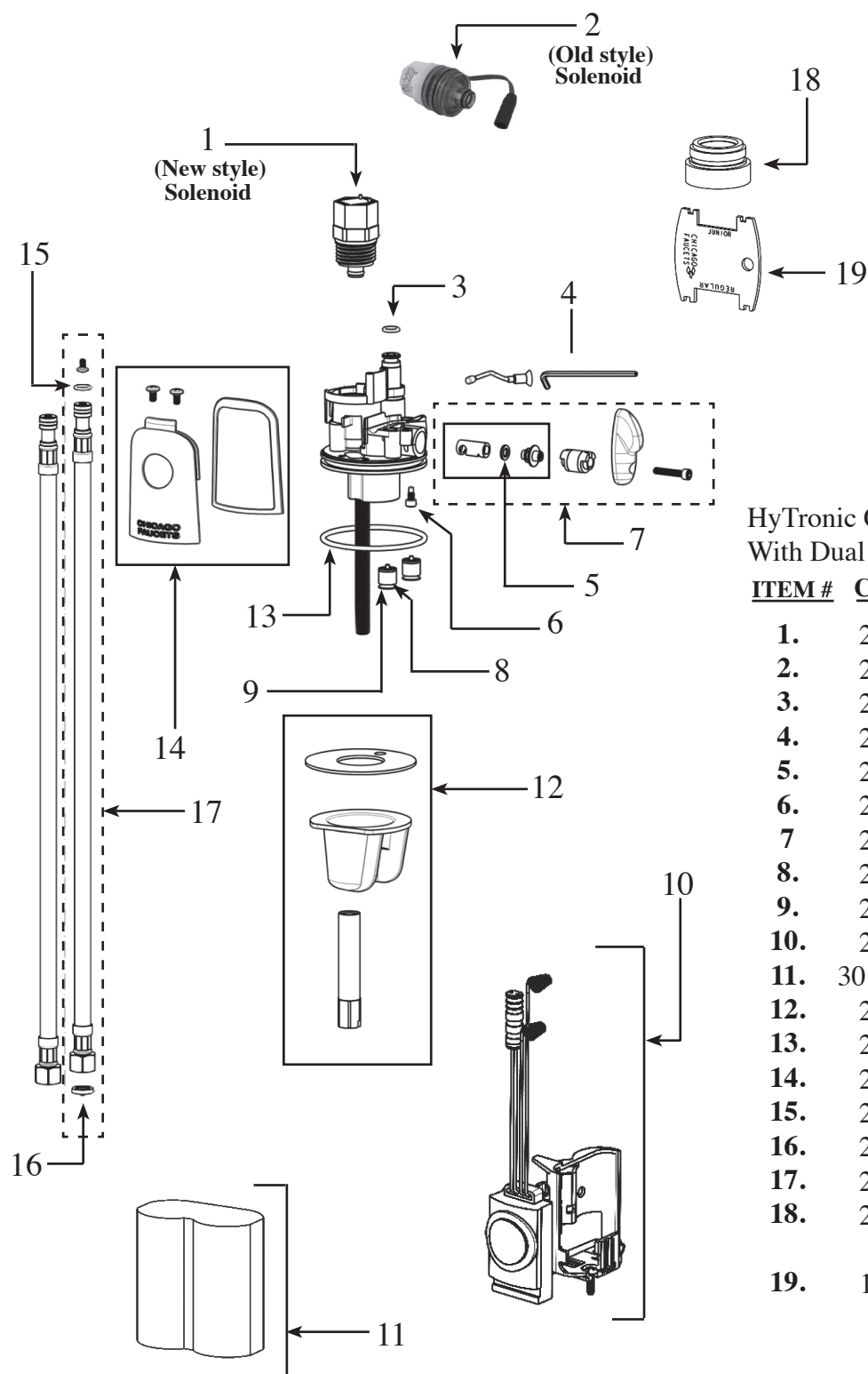
- |     |                        |                           |
|-----|------------------------|---------------------------|
| 1.  | <b><u>93202</u></b>    | Battery Holders           |
| 2.  | <b><u>93203</u></b>    | Solenoid Coil Module      |
| 3.  | <b><u>93204</u></b>    | Sensor Eye / Cable        |
| 4.  | <b><u>93205</u></b>    | Solenoid valve Repair Kit |
| 5.  | <b><u>93206</u></b>    | Control Disc Assembly     |
| 6.  | <b><u>9726</u></b>     | Angle Stop Repair Kit     |
| 7.  | <b><u>93207</u></b>    | Manual Button Assembly    |
| 8.  | <b><u>40201005</u></b> | Vacuum Breaker Repair Kit |
| 9.  | <b><u>40266125</u></b> | 3/4" Top spud Assembly    |
| 10. | <b><u>93208</u></b>    | Blue Rubber Disc.         |
| 11. | <b><u>93213</u></b>    | 1.0 GPF Control Module    |
| 12. | <b><u>93210</u></b>    | Sensor Cover              |
| 13. | <b><u>40950069</u></b> | O-ring #31                |
| 14. | <b><u>93205</u></b>    | Part of Kit (Item # 4)    |

*Individual Parts Available Upon Request!  
(Special order)*




**CHICAGO  
FAUCETS**


Part No. **22790**  
(116.222.AB.1) Battery Faucet



HyTronic Contemporary Sink Faucet  
With Dual Beam Infrared Sensor

ITEM #	Cat. No.	DESCRIPTION
1.	22798	Solenoid (new style)
2.	22660	Solenoid (old style)
3.	22799	O-ring
4.	22650	Shut-off screw
5.	22651	O-ring
6.	22652	Mixer external kit
7.	22653	Handle (mixer kit)
8.	22654	Check cartridge (1ea)
9.	22799	O-ring
10.	22655	Electronic module
11.	30100061	6V Lithium battery
12.	22795	Hardware kit
13.	22796	O-ring
14.	22797	Window kit
15.	22792	O-ring
16.	22794	Filter screen
17.	22793	S/S braided hose kit (1ea)
18.	22659	0.5gpm vandal proof non-aerating spray
19.	12110	Vandal proof key



Toll Free: 800-327-3022



Fax Free: 800-327-5689

**CHICAGO  
FAUCETS**
**Cat. No. 22791**

(116.103.AB.1) Battery Faucet  
Deck Mounted Single Hole, HyTronic Dual  
Infrared Beam, Gooseneck Faucet,

ITEM#	Cat. No.	DESCRIPTION
1.	22798	Solenoid (new style)
2.	22660	Solenoid (old style)
3.	22659	0.5gpm vandal proof non-aerating spray
4.	12110	Vandal proof key
5.	40950038	O-ring
6.	22658	Spout nut
7.	22657	Nut & washer kit
8.	40120920	Celcon washer
9.	22792	O-ring
10.	22793	S/S braided hose
11.	22655	Gooseneck base kit
12.	22654	Check cartridge
13.	22799	O-ring
14.	22799	O-ring
15.	22650	Shut-off screw
16.	Not sold separately	Plug (single supply)
17.	22651	O-ring
18.	Not sold separately	Dog point retaining screw
19.	22796	O-ring
20.	22797	Window kit
21.	22794	Filter screen
22.	22656	AC power adapter
23.	22795	Hardware kit
24.	22655	Electric module .5gpm
25.	40120083	Gooseneck spour assy. (5-8 & 25)

