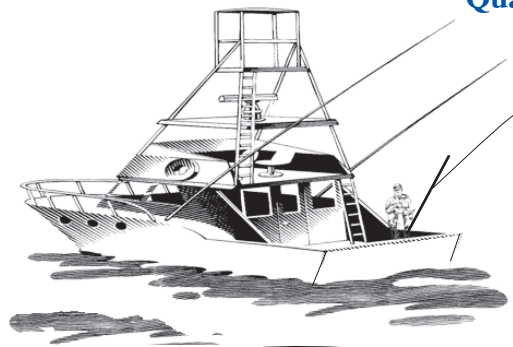


Quality Line-Plumbing Specialties

Orlando, Florida



*Servicing the Southeast
"Since 1965"*

Toll Free: 1-800-327-3022

Fax Free: 1-800-327-5689

Vitreous China

Sloan's Vitreous China fixtures incorporate cutting-edge water saving designs that will cut your water usage down to it's absolute minimum.



***Reliable Foundations for
Great Savings!!***

SLOAN.

INDEX

- Page 1. Model ST-2053-1.6 Wall mounted water closet
TMS Marlin# 40210080
Model ST-2050-1.28 Wall mounted water closet
TMS Marlin# 40210081**
- Page 2. Model ST-2003-1.6 Floor mounted water closet
TMS Marlin# 40210082
Model ST-2000-1.28 Floor mounted water closet
TMS Marlin# 40210083**
- Page 3. Model ST-2023-1.6 Floor mounted water closet
TMS Marlin# 40210084
Model ST-2020-1.28 Floor mounted water closet
TMS Marlin# 40210085**
- Page 4. Model ST-2063-1.6 Wall mounted water closet
TMS Marlin# 40210094
Model ST-2013-1.6 Floor mounted water closet
TMS Marlin# 40210095**
- Page 5. Model SU-1005-0.5 Wall mounted water urinal
TMS Marlin# 40210086
Model SU1006-1.0 Wall mounted water urinal
TMS Marlin# 40210087**
- Page 6. Model SU-1015-0.5 Wall mounted water urinal
TMS Marlin# 40210088
Model SU-1205-0.5 Wall mounted water urinal
TMS Marlin# 40210099**
- Page 7. Model SS-3003 Wall mounted lavatory/backsplash
TMS Marlin# 40210090
Model SS-3803 Wall mounted lavatory/backsplash
TMS Marlin# 40210098**
- Page 8. Model SS-3004 Wall mounted lavatory
TMS Marlin# 40210096
Model SS-3804 Oval drop-in lavatory
TMS Marlin# 40210097**
- Page 9. Model SS-3001 Oval undermount lavatory
TMS Marlin# 40210092
Model SS-3002 Wall mounted lavatory
TMS Marlin# 40210091**

Toll Free: 800-327-3022



Fax Free: 800-327-5689

SLOAN

Efficiency Series

**DESCRIPTION**

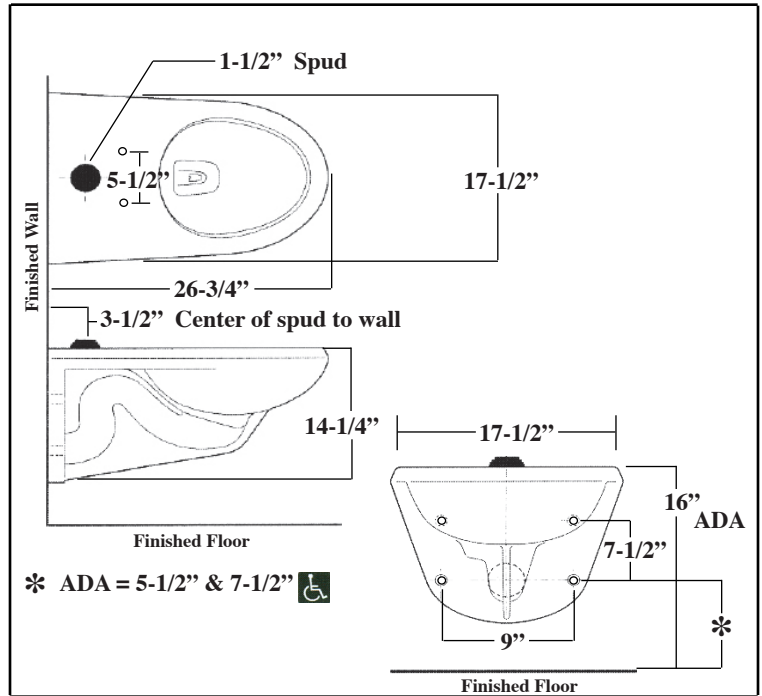
Complete vitreous china water closet



FLUSH CYCLE 1.6 gpf

SPECIFICATIONS

- Wall hung vitreous china elongated bowl
- Siphon jet flushing action
- 1.5" IPS top spud inlet
- 2" fully glazed trapway diameter.
- Mounting hardware, carrier and toilet seat not included.
- Integral flushing rim
- Water spot area 9-1/2" x 8-1/4"
- ASME A112.19.2/CSA B45.1

TMS Part No. **40210080****MODEL** ST-2053-1.6 Vitreous China Water Closet**SLOAN**

Efficiency Series

**DESCRIPTION**

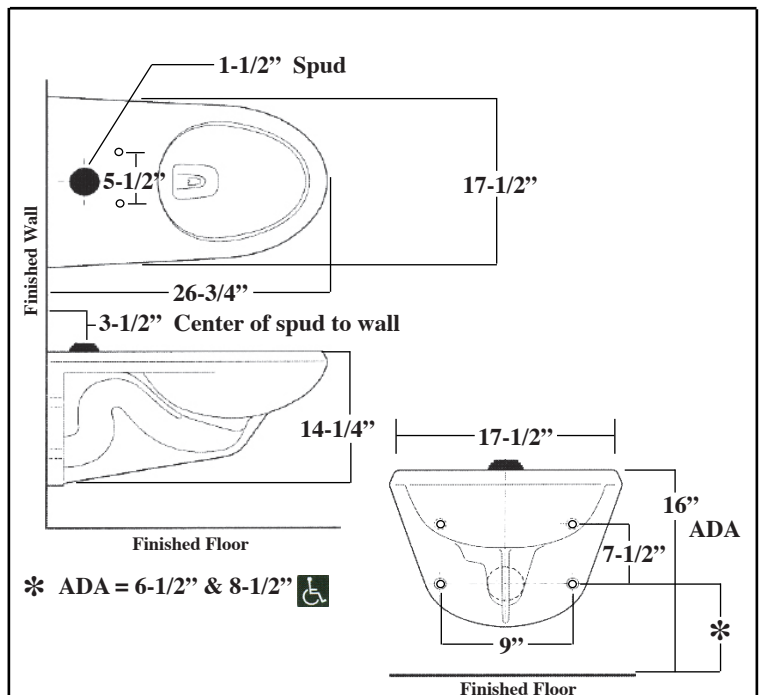
Complete vitreous china water closet



FLUSH CYCLE 1.28 gpf

SPECIFICATIONS

- Wall hung vitreous china elongated bowl
- Siphon jet flushing action
- 1.5" IPS top spud inlet
- 2" fully glazed trapway diameter.
- Mounting hardware, carrier and toilet seat not included.
- Integral flushing rim
- Water spot area 9-1/2" x 8-1/4"
- ASME A112.19.2/CSA B45.1

TMS Part No. **40210081****MODEL** ST-2050-1.28 Vitreous China Water Closet

Toll Free: 800-327-3022



Fax Free: 800-327-5689

SLOAN

Efficiency Series



DESCRIPTION

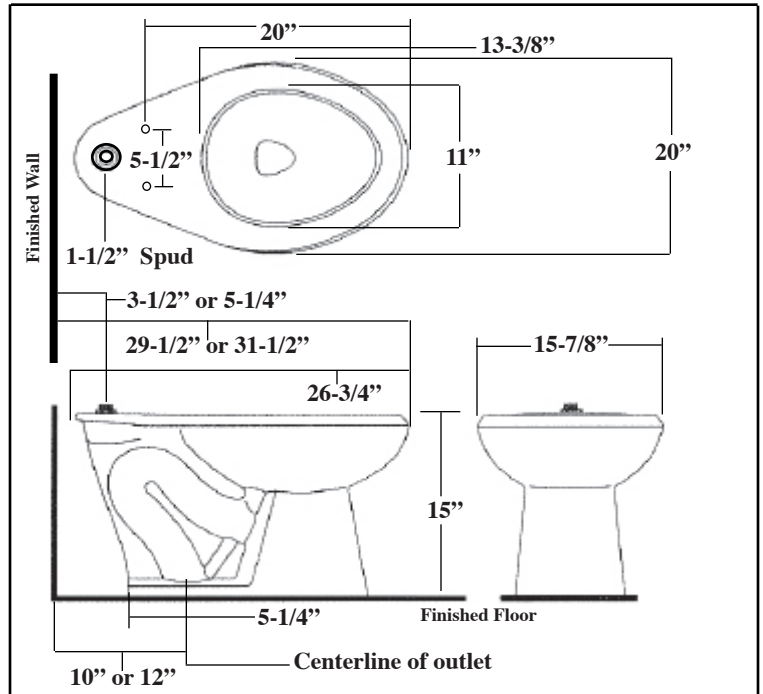
Complete vitreous china
water closet

FLUSH CYCLE 1.6 gpf

SPECIFICATIONS

- Vitreous china
- Floor mounted
- Siphon jet flushing action
- 1.5" IPS top spud inlet
- 2" trapway diameter
- Fully glazed trapway
- Toilet seat not included
- Integral flushing rim
- Elongated bowl
- Water spot area 9-1/2" x 7-3/8"
- Closet bolts & caps included
- Water closet compliant to the applicable sections of ASME A112.19.2/CSA B45.1

TMS Part No. **40210082**



MODEL ST-2003-1.6 Vitreous China Water Closet

SLOAN

Efficiency Series



DESCRIPTION

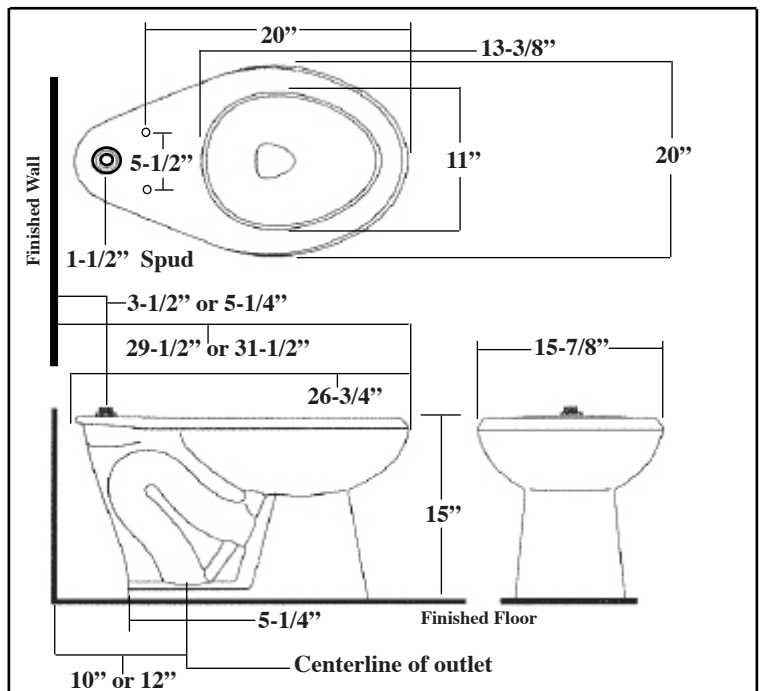
Complete vitreous china
water closet

FLUSH CYCLE 1.28 gpf

SPECIFICATIONS

- Vitreous china
- Floor mounted
- Siphon jet flushing action
- 1.5" IPS top spud inlet
- 2" trapway diameter
- Fully glazed trapway
- Toilet seat not included
- Integral flushing rim
- Elongated bowl
- Water spot area 9-1/2" x 7-3/8"
- Closet bolts & caps included
- Water closet compliant to the applicable sections of ASME A112.19.2/CSA B45.1

TMS Part No. **40210083**



MODEL ST-2000-1.28 Vitreous China Water Closet

Toll Free: 800-327-3022



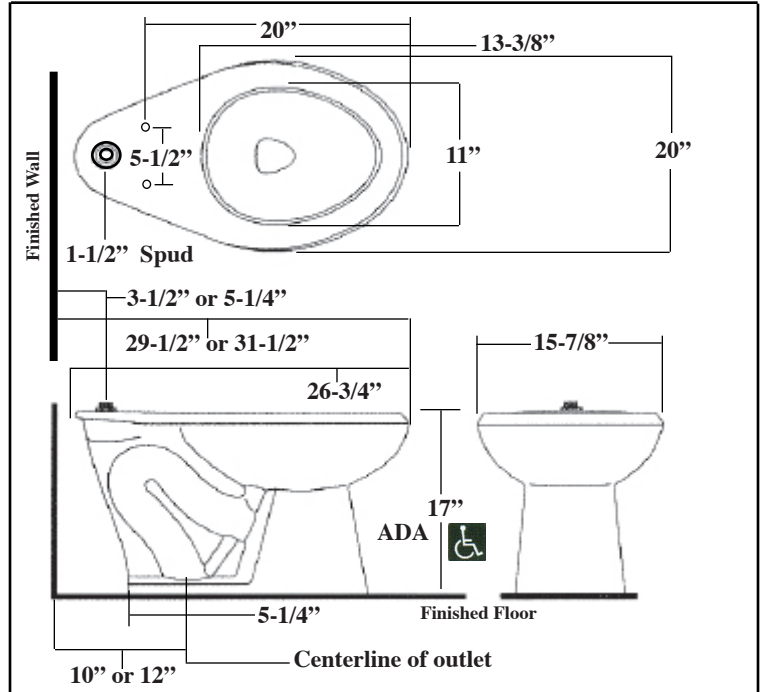
Fax Free: 800-327-5689

SLOAN

Efficiency Series

**SPECIFICATIONS**

- Vitreous china
- Floor mounted
- ADA compliant
- Siphon jet flushing action
- 1.5" IPS top spud inlet
- 2" trapway diameter
- Fully glazed trapway
- Toilet seat not included
- Integral flushing rim
- Elongated bowl
- Water spot area 9-1/2" x 7-3/8"
- Closet bolts & caps included
- Water closet compliant to the applicable sections of ASME A112.19.2/CSA B45.1

TMS Part No. **40210084****DESCRIPTION**

Complete ADA Compliant vitreous china water closet



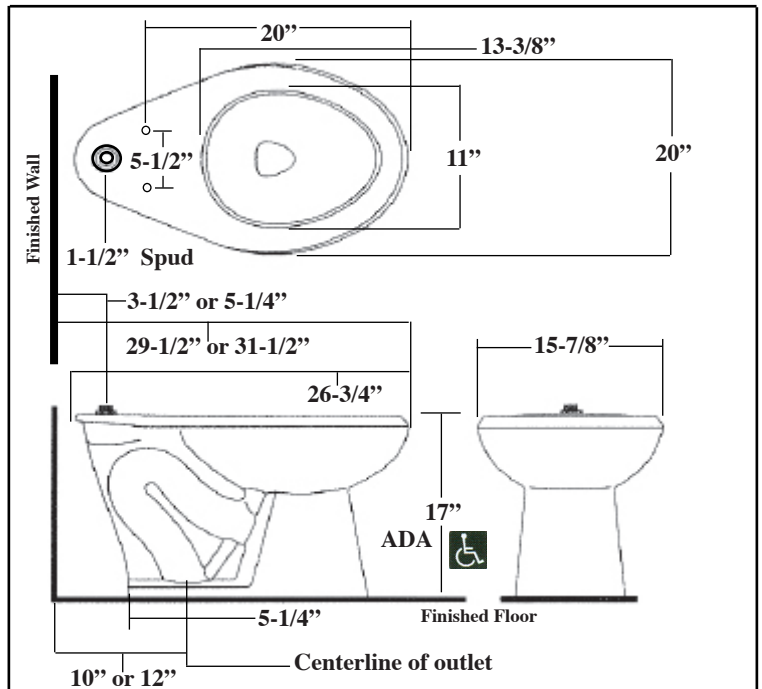
FLUSH CYCLE 1.6 gpf

MODEL ST-2023-1.6 ADA Compliant Vitreous China Water Closet**SLOAN**

Efficiency Series

**SPECIFICATIONS**

- Vitreous china
- Floor mounted
- ADA compliant
- Siphon jet flushing action
- 1.5" IPS top spud inlet
- 2" trapway diameter
- Fully glazed trapway
- Toilet seat not included
- Integral flushing rim
- Elongated bowl
- Water spot area 9-1/2" x 7-3/8"
- Closet bolts & caps included
- Water closet compliant to the applicable sections of ASME A112.19.2/CSA B45.1

TMS Part No. **40210085****DESCRIPTION**

Complete ADA Compliant vitreous china water closet



FLUSH CYCLE 1.28 gpf

MODEL ST-2020-1.28 ADA Compliant Vitreous China Water Closet

Toll Free: 800-327-3022



Fax Free: 800-327-5689

SLOAN

Efficiency Series

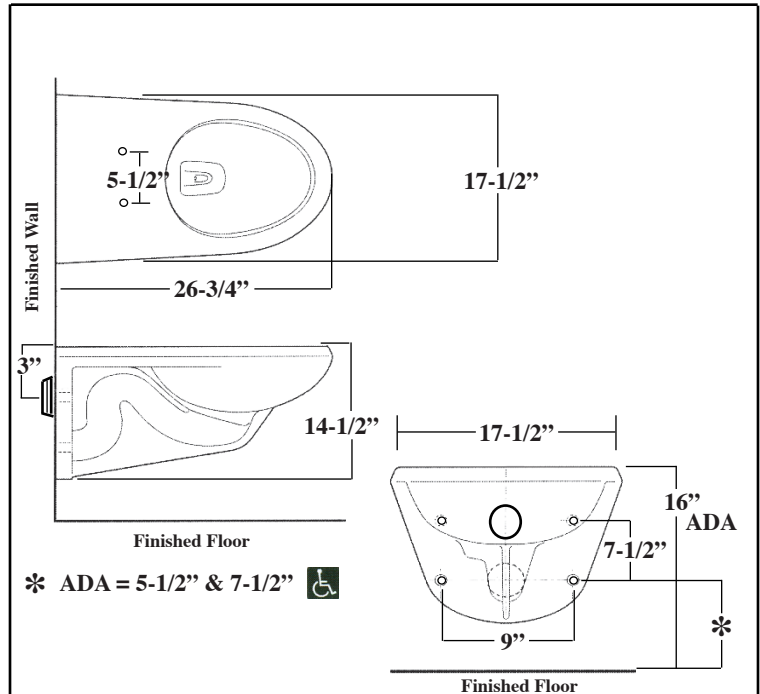
**DESCRIPTION**

Complete rear spud wall hung vitreous china water closet

FLUSH CYCLE 1.6 gpf

SPECIFICATIONS

- Wall hung vitreous china elongated bowl
- Siphon jet flushing action
- 1.5" rear spud inlet
- 2" fully glazed trapway diameter.
- Mounting hardware, carrier and toilet seat not included.
- Integral flushing rim
- Water spot area 9-1/2" x 8-1/4"
- ASME A112.19.2/CSA B45.1

TMS Part No. **40210094****MODEL** ST-2063-1.6 Vitreous China Water Closet**SLOAN**

Efficiency Series

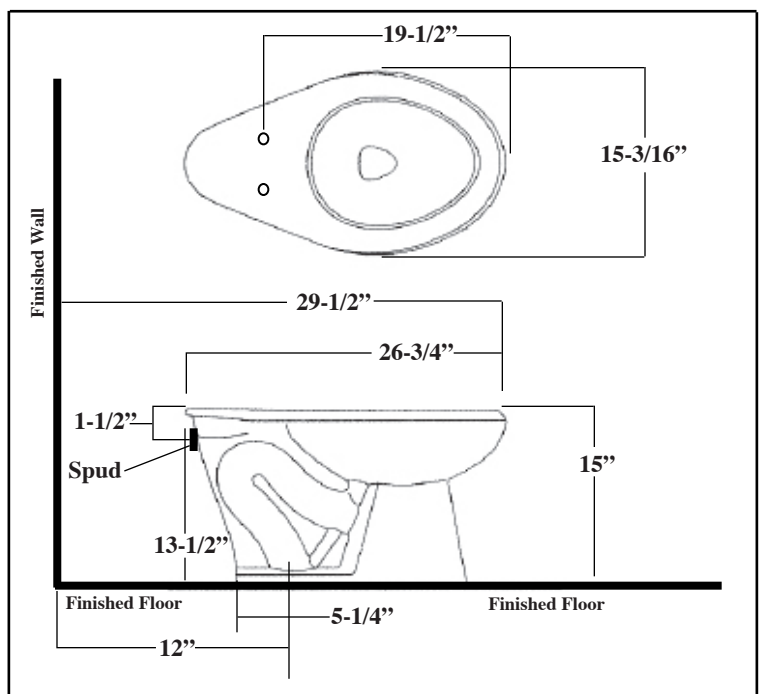
**DESCRIPTION**

Complete rear spud vitreous china water closet

FLUSH CYCLE 1.6 gpf

SPECIFICATIONS

- Vitreous china
- Floor mounted
- Siphon jet flushing action
- 1.5" IPS rear spud inlet
- 2" trapway diameter.
- Fully glazed trapway
- Toilet seat not included
- Integral flushing rim
- Elongated bowl
- Water spot area 9-1/2" x 7-3/8"
- Closet bolts and caps included
- ASME A112.19.2/CSA B45.1

TMS Part No. **40210095****MODEL** ST-2013-1.6 Vitreous China Water Closet

Toll Free: 800-327-3022



Fax Free: 800-327-5689

SLOAN

Efficiency Series



DESCRIPTION

Complete vitreous china urinal

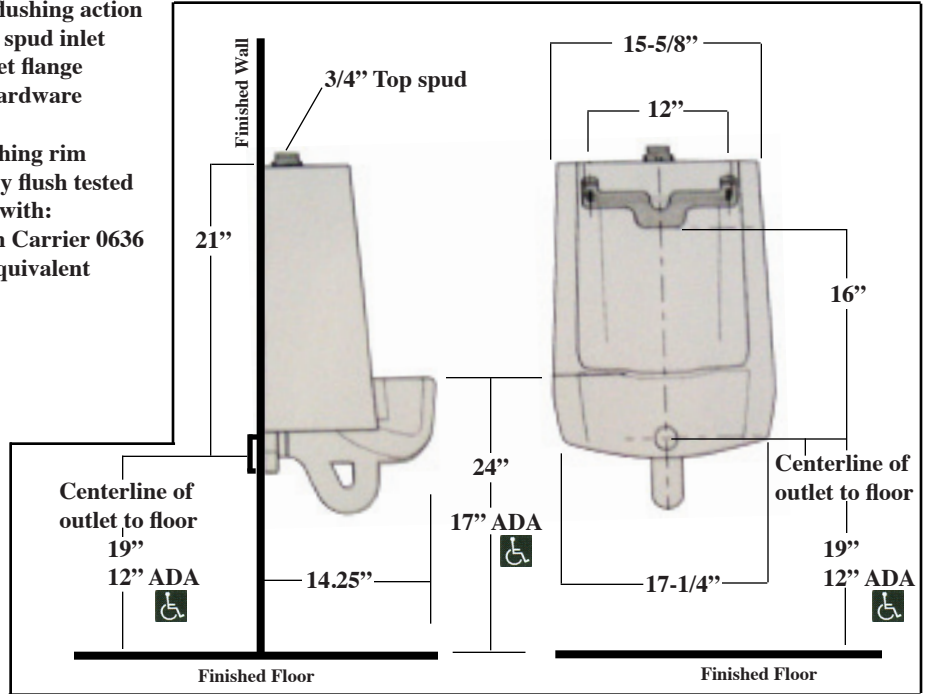


FLUSH CYCLE 0.5 gpf

SPECIFICATIONS

- Wall hung vitreous china
- Washdown flushing action
- 3/4" IPS top spud inlet
- 2" NPT outlet flange
- All mount hardware included.
- Integral flushing rim
- 100% factory flush tested
- Compatible with:
Jay R. Smith Carrier 0636 or 0637 or equivalent

TMS Part No. **40210086**



MODEL SU-1005-0.5 Vitreous China Water Urinal

SLOAN

Efficiency Series



DESCRIPTION

Complete vitreous china urinal

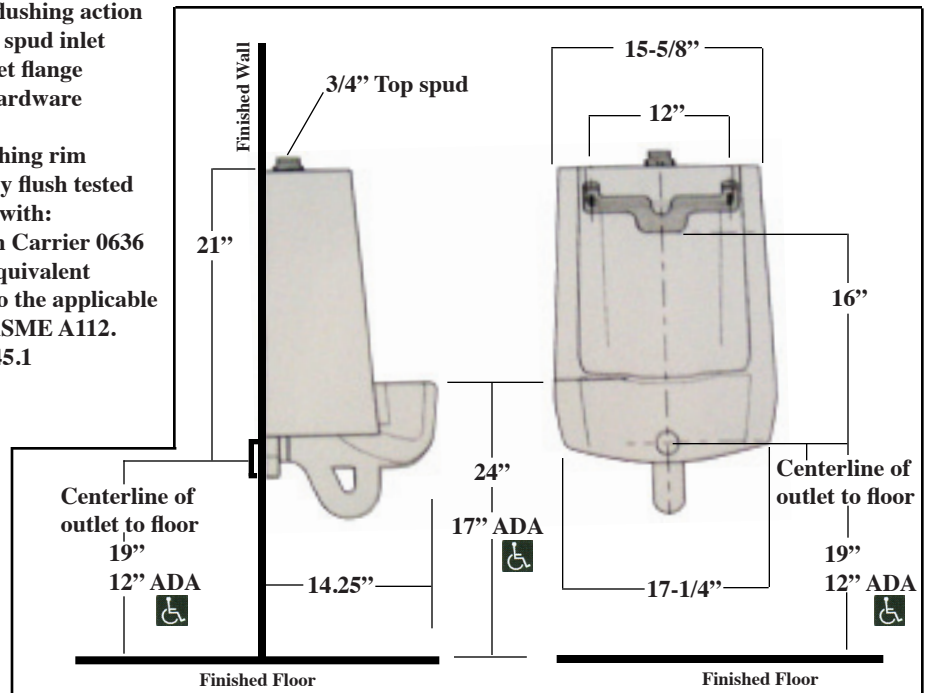


FLUSH CYCLE 1.0 gpf

SPECIFICATIONS

- Wall hung vitreous china
- Washdown flushing action
- 3/4" IPS top spud inlet
- 2" NPT outlet flange
- All mount hardware included.
- Integral flushing rim
- 100% factory flush tested
- Compatible with:
Jay R. Smith Carrier 0636 or 0637 or equivalent
- Compliant to the applicable sections of ASME A112.19.2/CSA B45.1

TMS Part No. **40210087**



MODEL SU-1006-1.0 Vitreous China Water Urinal

Toll Free: 800-327-3022



Fax Free: 800-327-5689

SLOAN

Efficiency Series

**DESCRIPTION**

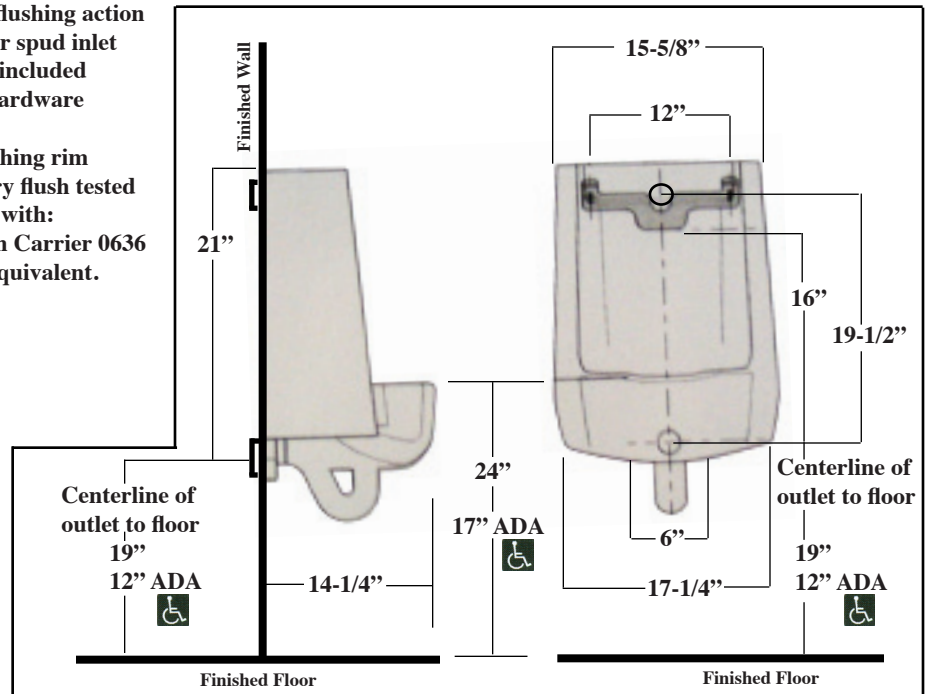
Complete vitreous china urinal



FLUSH CYCLE 0.5 gpf

SPECIFICATIONS

- Wall hung vitreous china
- Washdown flushing action
- 3/4" IPS rear spud inlet
- Carrier not included
- All mount hardware included.
- Integral flushing rim
- 100% factory flush tested
- Compatible with:
Jay R. Smith Carrier 0636 or 0637 or equivalent.

TMS Part No. **40210088****MODEL** SU-1015-0.5 Vitreous China Water Urinal**SLOAN**

Efficiency Series

**DESCRIPTION**

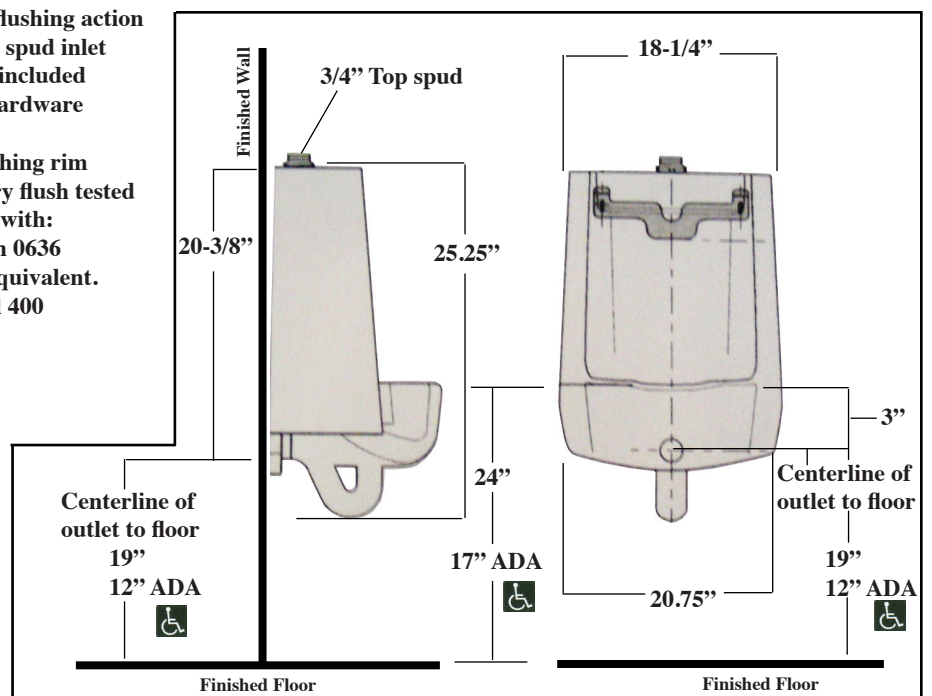
Vitreous china retrofit top spud Urinal



FLUSH CYCLE 0.5 gpf

SPECIFICATIONS

- Wall hung vitreous china
- Washdown flushing action
- 3/4" IPS top spud inlet
- Carrier not included
- All mount hardware included.
- Integral flushing rim
- 100% factory flush tested
- Compatible with:
Jay R. Smith 0636 or 0637 or equivalent.
Wade model 400

TMS Part No. **40210099****MODEL** SU-1205-0.5 Vitreous China Top Spud Water Urinal

Toll Free: 800-327-3022



Fax Free: 800-327-5689

SLOAN**SPECIFICATIONS**

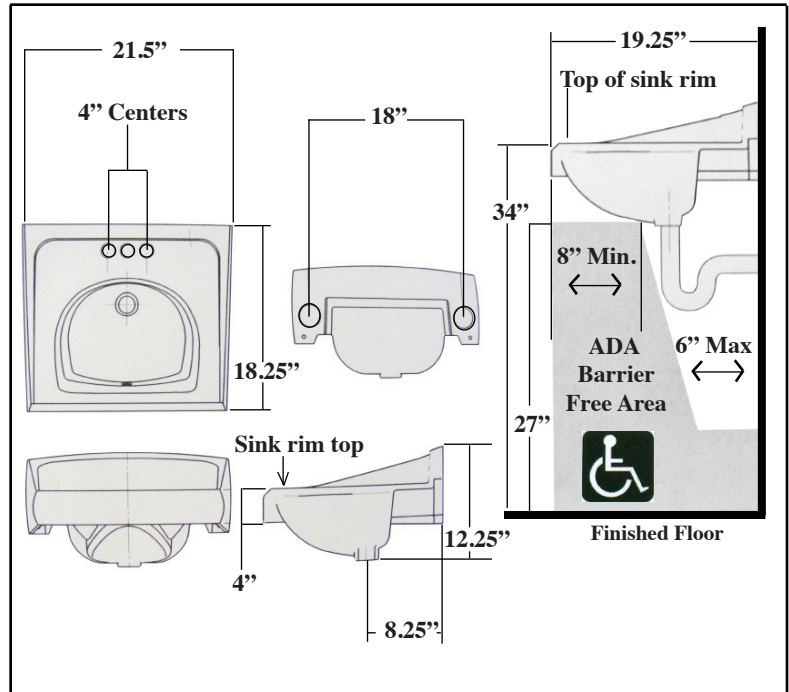
- White vitreous china
- Wall mount
- Hanging hardware
- Backsplash
- 4" centers
- Overflow
- ADA compliant when mounted with deck at 34" from finished floor.
- 21.5" x 18.25"
- Carrier not included
- Compatible with:
Jay R Smith - 700 series lavatory carrier or equal
Josam - 17100-202 series lavatory carrier or equal
Watts TCA-411 concealed arm "track" carrier or equal
Watts-WCA-411 carrier concealed arms or equal

**DESCRIPTION**

Complete vitreous china lavatory with backsplash with 4" centers

TMS Part No. **40210090**

(With Bracket)

**MODEL** SS-3003 Vitreous China lavatory with backsplash**SLOAN****SPECIFICATIONS**

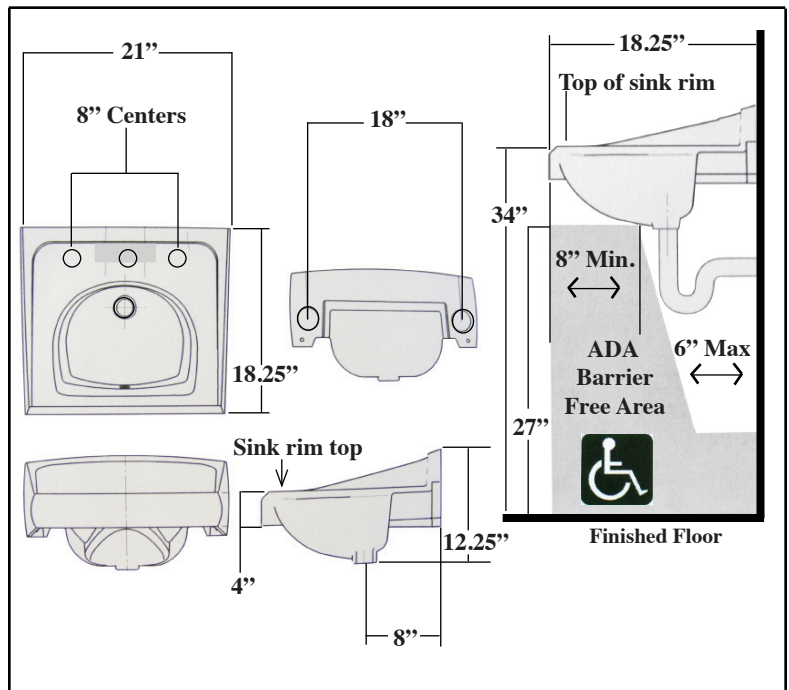
- Vitreous china
- Wall mount
- 8" centers
- Overflow
- 1-1/4" drain
- ADA compliant when mounted with deck at 34" from finished floor.
- 21" x 19-1/4"
- Carrier not included
- Carrier required:
Josam series 17100-202 exposed arm carrier or equal

**DESCRIPTION**

Complete vitreous china lavatory with backsplash with 8" centers

TMS Part No. **40210098**

(With Bracket)

**MODEL** SS-3803 Vitreous China lavatory with backsplash

Toll Free: 800-327-3022



Fax Free: 800-327-5689

SLOAN

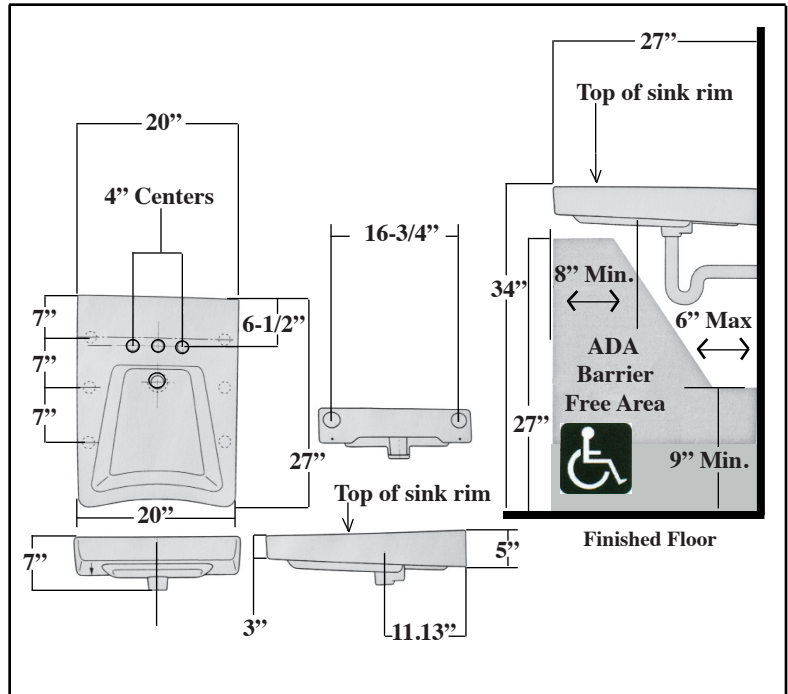
* Carrier Required

**DESCRIPTION**

Complete vitreous china lavatory

SPECIFICATIONS

- White vitreous china
- Wall mount
- Hanging hardware included
- 4" centerset
- Overflow
- ADA compliant when mounted with deck at 34" from finished floor
- 20" x 27"
- Carrier not included
- Compatible with:
Jay R. Smith 0700-27-M31 series lavatory carrier or equal.
Josam-1700-67 series lavatory carrier or equal
Watts TCA-411-WC concealed arm 27" x 20" "track" carrier or equal.
Watts WCA-411 carrier with concealed arms or equal.

TMS Part No. **40210096** (Carrier Only)**MODEL** SS-3004 ADA Wall Mount Lavatory**SLOAN**

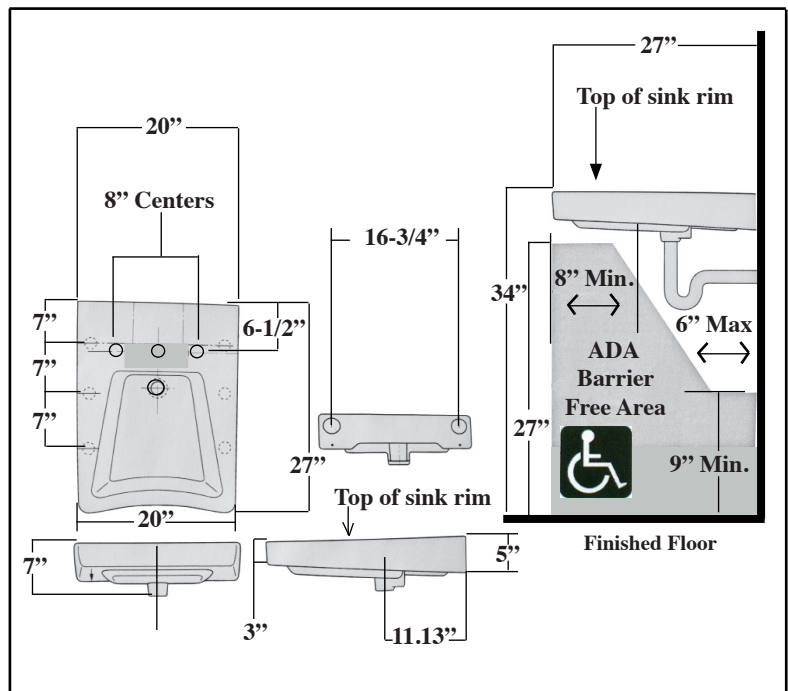
* Carrier Required

**DESCRIPTION**

Complete vitreous china lavatory

SPECIFICATIONS

- White vitreous china
- Wall mount
- Hanging hardware included
- 8" centerset
- Overflow
- ADA compliant when mounted with deck at 34" from finished floor
- 20" x 27"
- Carrier not included
- Compatible with:
Jay R. Smith 0700-27-M31 series lavatory carrier or equal.
Josam-1700-67 series lavatory carrier or equal
Watts TCA-411-WC concealed arm 27" x 20" "track" carrier or equal.
Watts WCA-411 carrier with concealed arms or equal.

TMS Part No. **40210097****MODEL** SS-3804 ADA Wall Mount Lavatory

Toll Free: 800-327-3022



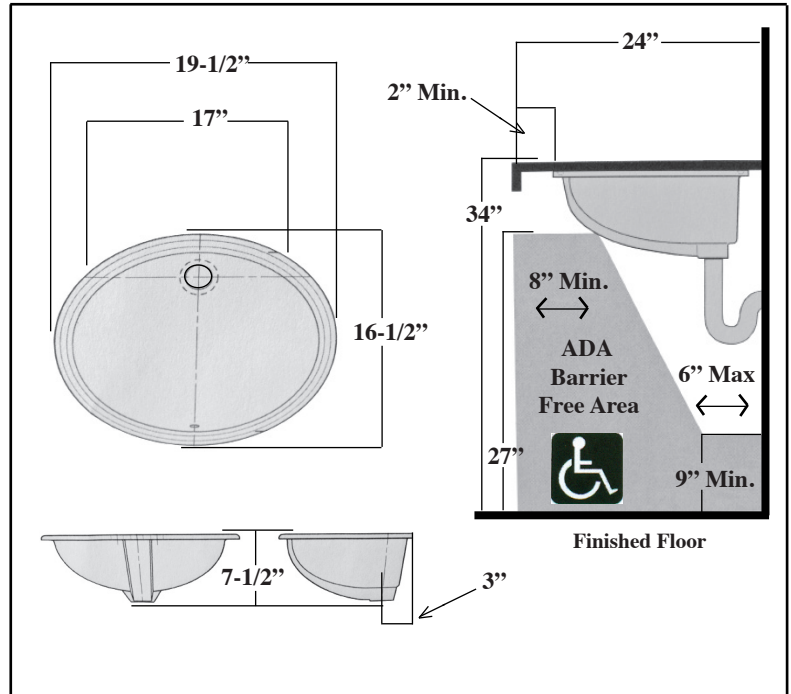
Fax Free: 800-327-5689

SLOAN**SPECIFICATIONS**

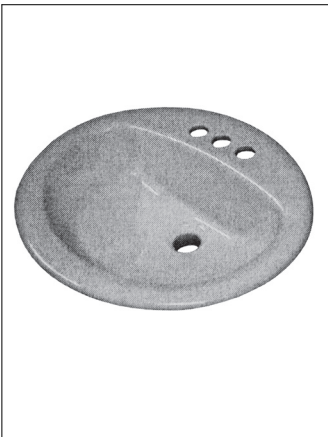
- White vitreous china
- Overflow
- ADA compliant when mounted with lavatory mounted at 34" from finished floor.
- 19-1/2" x 16-1/2"

**DESCRIPTION**

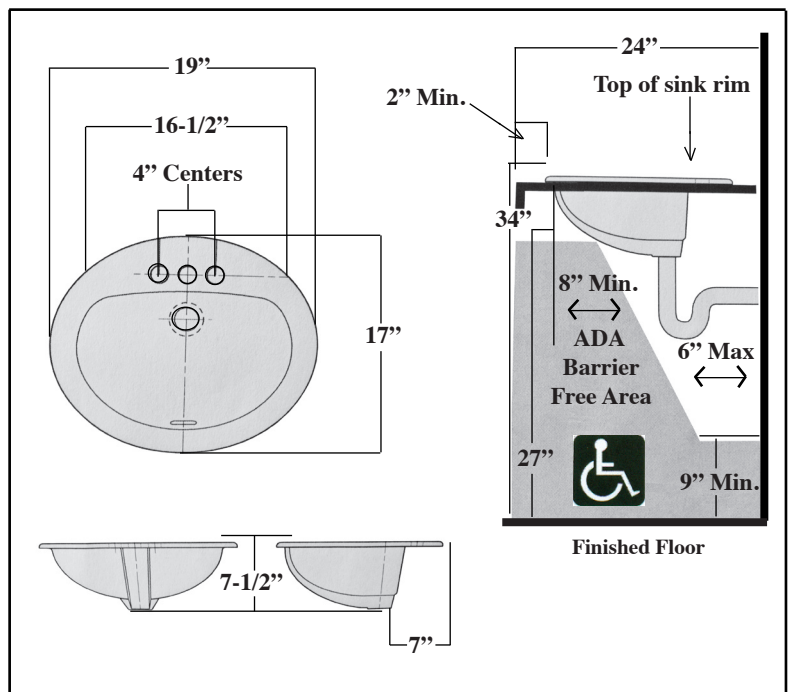
Complete vitreous china lavatory

TMS Part No. **40210092****MODEL** SS-3001 Vitreous China Oval Undermount Lavatory**SLOAN****SPECIFICATIONS**

- Vitreous china
- Self-rimming
- 4" centers
- Overflow
- ADA compliant when mounted with lavatory mounted at 34" from finished floor.
- 20" x 17"
- Compliant to the applicable sections of ASME A112.19.2/CSA B45.1

**DESCRIPTION**

Complete vitreous china lavatory

TMS Part No. **40210091****MODEL** SS-3002 Vitreous China Oval Drop-in-Lavatory